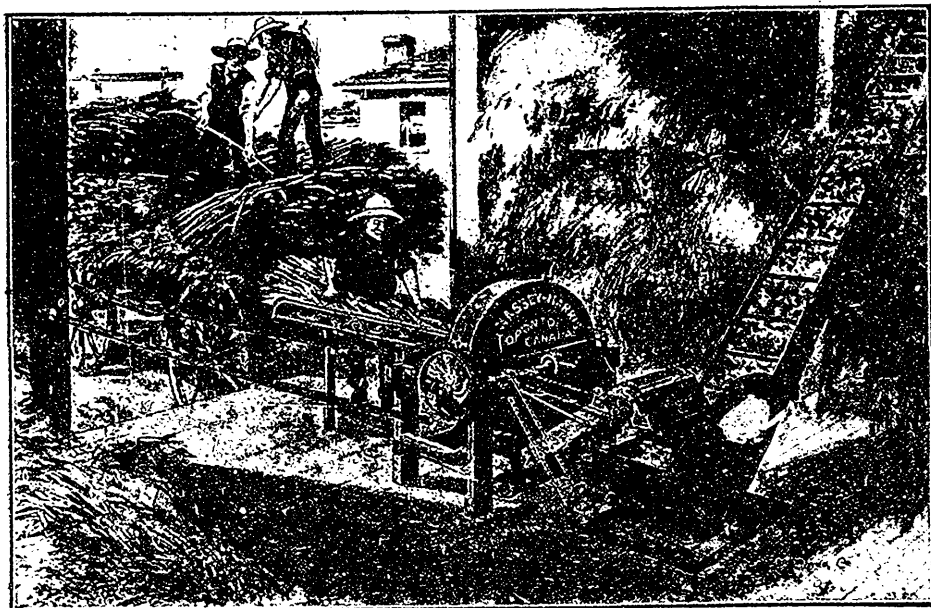
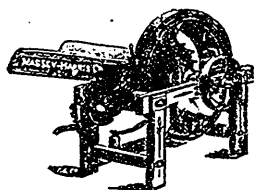


Ensilage Cutting

On the up-to-date farm ensilage is now an absolute necessity. Ensilage is easily and quickly made if you have the right machine. The new Massey-Harris Roller Bearing Ensilage Cutter with Coil Spring Pressure applied to feed roller, and other improvements, is an admirable machine. Carriers are furnished in 8, 12, 16, 20 and 24 ft. lengths, and upwards in multiples of 4 ft.

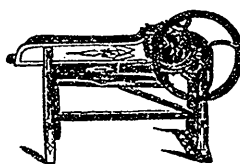


New Massey-Harris Roller Bearing Ensilage Cutter.



**Massey-Harris
Straw Cutter**

adapted for steam or horse power. It cuts 3 lengths, and has a capacity of one ton per hour. Knives can be instantly stopped and the feed reversed by touching a lever, thus avoiding accidents.



**Massey-Harris
Feed Cutter**

This little Cutter is of the "Cumming's" type, and is a great favorite. It is suitable for hand or power, and can be driven by either Knur'le or Pulley. It cuts five lengths, viz., $\frac{3}{8}$, $\frac{1}{2}$, $\frac{3}{4}$, 1 and 2 inch. Just the machine for small farms.

Massey - Harris Company

LIMITED

TORONTO, CANADA.