

## MISCELLANEOUS.

# Mine, Mill and Smelter Supplies

**We are prepared to furnish estimates on complete Mine and Mill Equipment.**

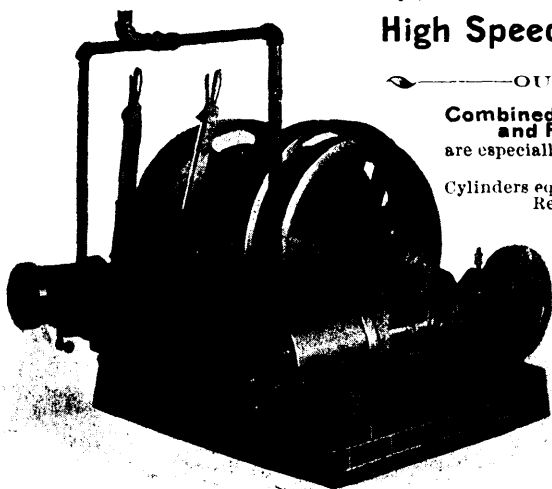
# Bolthoff's Lightning Quadruple Friction Hoist.

**Unquestionably the Most Popular Friction Hoist ever built. X**

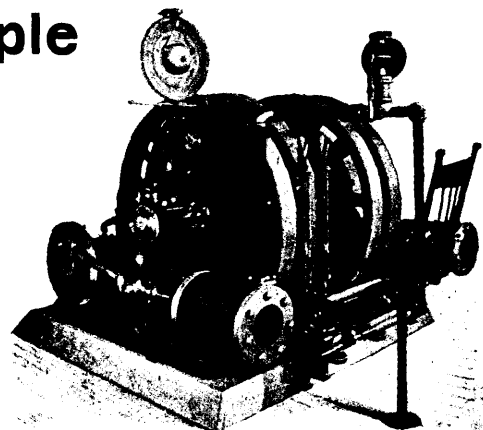
Hundreds of them are in daily service.

For sinking vertical shafts to a depth of 900 feet they are

**Cheap, Durable, Compact,  
High Speed, Silent.**



### BOLTHOFF'S GEARED HOIST.



OUR

**Combined Noiseless Gear  
and Friction Hoists**  
are especially adapted for prospect-  
ing.  
Cylinders equipped with Automatic  
Release Valves.

# The Hendrie & Bolthoff Manufacturing and Supply Co.

1601 - 1615 17th Street.

**DENVER, - Colo., U.S.A.**

Write for prices.

# ALBION IRON WORKS COMPANY, L'TD.

**CAPITAL      —      —      —      —      \$500,000**

ENGINEERS. IRON FOUNDERS AND BOILER MAKERS.

**MANUFACTURERS OF MARINE AND LAND ENGINES, BOILERS, ETC.**

FISH CANNING AND MINING MACHINERY, FRENCH GIANT PIPES AND SINKING PUMPS FOR MINES, STOVES, GRATES  
RANGES, ETC., ETC.

Sole Agents in British Columbia for H. R. Worthington's Steam Pumps, and Ingersoll Rock Drill Company's Steam Rock Drills.

**NO. 1 CHATHAM STREET AND 71 STORE STREET, VICTORIA, B.C.**

—\*—P. O. DRAWER 12.—\*—

## PIONEER STEAM COFFEE & SPICE MILLS.

ESTABLISHED 1868.

**Manufacturers of Coffee, Spices, Cocoa, Cream**

**Tartar. Mustard and Baking Powder.** : : :

**STEMLER & EARLE, Pembroke Street**

Between Government and Douglas, VICTORIA, B.C.

**B. C. POTTERY CO., LIMITED**  
**VICTORIA, B.C.**

**Manufacturers of . . .**

**Fire Bricks, Pressed Bricks, Sewer Pipe and Fittings, Chimney Pipe, Flower Pots, etc.**

M. R. SMITH & CO. ★

**ESTABLISHED 1858.**

MANUFACTURERS OF

## HIGH CLASS BISCUITS & CONFECTIONERY

**Gold Medals awarded at Royal Agricultural Exhibition, '95-'96-'97-'98. Medal and Diploma awarded at Colonial and Indian Exhibitions. Silver Medals at Provincial Exhibitions, 1886.**

**BRANCH**  
**430 Cordova Street.**

**VICTORIA, B.C.**