



AN eye-headache some times accompanied by an earache and burning sensations of the eyes is caused by an over effort of the brain to understand a blurred image that has been thrown on the retina of the eye. In the eye-camera the foci are changed by the eye muscles that swell and reduce the shape of the crystalline lens. When these muscles become weakened an optometrist must prescribe the outer-man-made lenses to bring about this focus accommodation.

CARL A. CLASS
Optometrist

The Bothwell Times moved to another building last week. Dismantling cylinder presses and Linotype and re-assembling after moving is one job which calls for more than brute strength, as all printing equipment must be very finely adjusted.

WANT COLUMN.

FOR SALE

FOR SALE—50 S. C. White Leghorns, cockerels, laying strain, \$1.00 to 1.50 each.—E. W. Brown, Alvington, R.2. Phone 695 Watford. n14-4f

FOR SALE—Winchester Rifle (45-60) Repeater; in good condition. Will be sold cheap. Apply at this office.

SEVERAL good dwelling house properties in Watford for sale cheap. Also a few farms in this vicinity. Apply to W. E. Fitzgerald, Barrister & Co, Watford.

FOR SALE—Registered Hereford Bull, eighteen months old. 1 pair yearling steers, also a barn 36x69, in good repair. Apply to James B. Parker, R.R. 4, Watford. n28-2t

WANTED

TENDERS will be received up till Monday, December 1st, 1924, for a caretaker for Watford Skating Rink, for the season of 1924-25. Applicants to state wages by the week. Duties will include making ice and attending wicket. Address tenders to W. G. Connolly, Sec.-Treas, Watford. 2t

From now on any pupil of the Milton Public School caught smoking cigarettes on his way to or from school will be handed over to Chief Constable who will ascertain from the pupil the source of his supply of fags. The chief will then prosecute the man who sold the cigarettes to the minor.

"The Covered Wagon"

At the Iroquois, Petrolia
Dec. 1st, 2nd, 3rd

To our Watford and vicinity patrons we wish to extend our sincere thanks for the support that they gave us during the run of The Sea Hawk. And now again we have to offer for your approval "The Covered Wagon" another Super Movie Production, which we claim will be well worth coming miles to see. Never before have you ever saw such a picture and never again will you. "The Covered Wagon" is a picture that is different from all others, and in many ways to. It isn't one of those pictures that every one ought to see, but will.

It not only prints in indelible and realistic colors, pictures of the west in its making, but it unfolds a love story of great sweetness. With its cast of some three thousand actors—three hundred covered wagons, a two mile train stretching across the wastelands, six hundred oxen, three thousand horses, all of which is only a bit of the vastness of this great picture, that shows the early days and the making of a great country. Lois Wilson, J. Warren Kerrigan, Ernest Torrence, Allan Hale, Tully Marshall, head an all star cast of principles. We earnestly request every one to be seated by 7.15 and 9.15, which is the time that the "Covered Wagon" goes on the screen each evening and at 2.30 on Wednesday afternoon matinee. We thank you.

Stratford's Old Boys Reunion surplus amounted to \$1,100.

Special Purchase OF Ladies' Coats

AT A SAVING OF FROM 25 TO 50 PER CENT.

Smart Coats with Fur Collars

\$15.50 \$16.75 \$18.75

BIG RANGE OF SIZES SHADINGS

Sizes 16 years to 44

COME FOR THE SPECIAL BARGAINS

FRIDAY AND SATURDAY

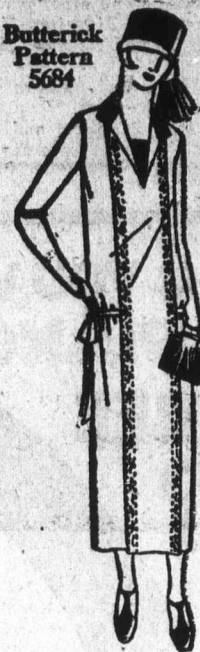
YOU SAVE FROM \$5.00 TO \$8.50 ON YOUR COAT

Sale starts Friday Morning. COME!

SWIFT'S

Your Xmas Present to Yourself—This Dress

Butterick Pattern 5684



5684—Only 2½ yards of 54-inch material are needed to make this one-piece dress in size 36.

EVEN if you have never made a dress before, you can make this one and be sure of success—if you use the Deltor. What is the Deltor? A wonderful dressmaking guide enclosed with the Butterick Pattern for the dress. Get your pattern at our Butterick Pattern counter and then visit our piece-goods counter.

Always Buy BUTTERICK PATTERNS with the DELTOR

SWIFT'S

Distinctive Holiday Gifts

ALL AT SMALL COST

EVER think of how The Guide-Advocate can help you solve the Christmas Gift Problem? What could be more appreciated by many of your friends than the recipient of your Personal Greeting Card,—or a box of Personal Initial Stationery or Correspondence Cards,—or a box of Panelled Visiting Cards. All fine examples of the printer's art on exclusive stock, and at quantity production prices.



Initialled Stationery

HERE'S A REAL SPECIAL! The finest quality of Social Stationery—Queen Anne Parchment—the same paper used in Wedding Announcements, etc., printed with your Personal Initials as above, Envelopes to match, in boxes.

Queen Anne Correspondent Cards, with Envelopes, boxed.

Ravelstone Fabric—A new line of boxed stationery in beautiful Ripple Finish with a Gold Deckle Edge. This line is a new American production just issued for Christmas selling. We have the only stock in this district.

Plain 60¢; 2 boxes \$1.00

Initialled 85¢; 2 boxes \$1.50

Your name and address added with the initial at no extra charge.

Not only your friends will appreciate these Stationery Gifts—you will want a couple of boxes for yourself at these quantity prices.

Personal Greeting Cards

SEE our large Sample Book for these exquisite designs. Your choice of any personal greeting, your name and address added, with envelopes supplied to match each design, at prices ranging from \$1.75 to \$2.50 for the 1st dozen. See our sample book and order early.

\$1.75 to \$2.50

Send the "Guide" to a Former Resident

NOW is the right time to send "The Guide-Advocate" to a former resident of East Lambton and receive the balance of this year Free. In Canada, \$2.00 per year; United States or foreign, \$2.50 to cover extra postage.

Your Gift will go as a reminder of your thoughtfulness every week in the year, bringing the news of the "old home town."

Daily Newspapers and Magazines

WE are Subscription Agents for any publication in North America. Simply pay your subscription at this office and we do the rest. No trouble writing, getting money order, etc. We forward subscriptions to their publishers every week—let us send yours for you at the same time. Get your receipt at this office.

Panelled Visiting Cards

CORRECT New Panelled Visiting Cards in Kid Finish, both ladies and men's sizes, printed in Imperial Script type.

\$1.50 per box; 2 boxes \$2.25

Order Early.

GUIDE-ADVOCATE

FINE CHRISTMAS GREETING CARDS AND STATIONERY

DRY CLEANED AND PRESSED
Ladies' Suits \$1.75 Men's Suits \$1.50

We Iron All the Sheets, Towels, Pillowslips, Tablecovers, Spreads and Flat Pieces and return the Wearing Apparel starched ready for Ironing, **TEN CENTS PER POUND**

You Will Find This a Very Cheap Way of Having Your Washing Done.

AYLMER STEAM LAUNDRY, Cleaners, Dyers
J. W. McCONKEY, Watford agent, South End

Goods Left Tuesday are Returned on Thursday.

Time to Make Your

Christmas Cake

WE have everything you require in the Grocery line and guarantee the quality to be the best.

**MINCEMEAT RAISINS CURRANTS
PEELS DATES ALMONDS
WALNUTS PRUNES ETC.**

Phone Your Orders

P. DODDS & SON

"WATFORD'S BUSY STORES"
Groceries, Footwear and Hardware

There was a fire at Arkona 1924, at 1 20 cows and roans are strong 1400 lbs. TERMS Cash; over credit on per annum sums.

Cleari

Farm, H. The under received in Kettle to his Stables

FRID

at 1 o'clock

Cream s

new top b

tank, 4 ne

3 new dra

wagon mat

box, bolts

rivets, 50 1

for double

hay, 100 c

part, 3 go

of heavy 1

truck; aut

ial, 68 ac

corner of

two acres

country, 1

plank, 2 s

feed, 2 bi

horse traps,

a number c

erous to m

TERMS—

cash; over

credit will

approved j

per annum

Robt. Kettl

Prop

Exe

Notice is ors and oth the estate o the Townsh County of L ed, are to s such claims of security to Cowan, C Ont., on or of December said date th to distribute parties entil gard only to shall then h

Sol Samuel Burr Watford, 15

EXECU

Notice is itors and oth the estate o the Townsh County of L ed, are to s such claims of security to Cowan, C on or before of December said date th to distribute parties entil gard only to shall then h Cowan St

Nov. 22nd, 1

Beatrice girl of Hulb shot and fata by Thomas repeated ref his attention

Bilt

fo

"The I

of C

SOLD BY-

J. W.