

Our Experience with Alfalfa

Jas. Glennie, Portage La Prairie Dist., Man.

In the summer of 1910 we sowed an acre of alfalfa on land that had grown potatoes two previous years and had been well manured. It made a fine growth, wintered well, and last summer was cut three times, the first cutting on 29th June and the last on 5th October. It had begun to blossom nicely at each cutting. At the last cutting the mower was run high. The field had made a growth of about four inches when winter set in. The severe cold without snow proved too much for it, and last spring hardly a root was left alive. It is strange that an acre that we sowed last sum-

mer put a hurdle across one end of the pen. There are holes in this hurdle for the lambs to get through. In a small rack the lambs can get feed whenever they wish. I feed them all the oats, hay and mangolds they will eat.

Study the Horses Head

C. W. Gurney, Brant Co. Ont.

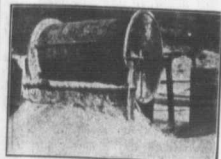
In no way can we arrive sooner at a horse's disposition than by study-

ing its head. I have found that a nervous disposition is indicated by a large dilated nostril, large prominent eyes, and a general leanness over the whole head. With abuse a head such as this will readily develop into a kicker or balky. The man who would own such a horse must be a good horseman. Such a horse will be enduring and intelligent.

We are all acquainted with the horse with a mulish head, nostrils too

small, eyes too small, and a stubborn horse every time. I have noticed that when a horse's face is almost off too quickly at the lips it is almost a certain indication of a balky.

Please find enclosed \$1.00 to pay my subscription to Farm and Dairy for one year. Truly, Farm and Dairy basis them all in its field of usefulness.—A. A. Powers, Durham Co., Ont.



Cement Mixing Made Easy

Mixing cement is a back-breaking job as many of us know to our sorrow. The simple mixer here illustrated, owned by W. O. Morse, Halton Co., Ont., is of a kind that might be purchased cooperatively by a few farmers and be the means of getting around much hard labor.

met right alongside of it, and of the same variety (Turkistan), came through unscathed, made a fine start this spring, but has done poorly since. At this date, 15th July, it is not more than eight inches high, and has not yet begun to blossom. And we have had rain and heat in abundance.

Note.—We would suggest that Mr. Glennie try a harder variety of alfalfa than the Turkistan, such as Grimm or Canadian Variegated.—Editor.

Sherbrooke Dairy Test

A two-day dairy test was conducted at the recent Sherbrooke, Que., Exhibition. It resulted as follows:

Lbs. Per cent Milk Fat. Pts.

1st—J. W. Logan, Howick
Ayrshire 43 4.2 108.9
2nd—A. Phaneuf, St. An-
toine, Ayrshire 47.5 3.8 99.4
3rd—A. L. Riches, Sher-
brooke, Holstein 43 2.7 77.7
4th—A. L. Riches, Sher-
brooke, Holstein 39.5 2.9 73.7

This test was conducted after these cows were exhibited in their several classes. Logan's cow, Ardene Carnage, has won the sweepstakes prize for best Ayrshire female two years in succession, Phaneuf's Reine 2nd coming 2nd in her class.

Well Arranged Sheep Shed

Jon. Simpson, Halton Co., Ont.

My sheep pen is 25 by 40 feet, with a deep passage in the centre and a rack on each side of passage. I have a door in the racks every 10 feet, so we can go from the passage into the pens. I also have gates or hurdles in the pens so that the space can be divided into almost any size of pens. For instance, those hurdles can be put in so as to have the pens four feet or eight feet wide, or any size wanted. When a ewe and lamb, she is penned off with the lambs for a day or two.

Sometimes my pen is divided into eight or 10 enclosures. This saves the young lambs from getting abused by other sheep. When the lambs are a few days old I put them in larger pens and several of them in a pen by taking out a hurdle or two. When the lambs are two weeks old



THE SARNIA FENCE CO.

SARNIA, ONT.

Direct from
FACTORY
to
FARMER

ROYAL FARM FENCING



THE SARNIA FENCE COMPANY, who have the largest fence plant in Canada, market their entire product direct to the farmer. Our policy eliminates travelling salesman's expenses, we keep no open accounts with anyone, we pay no commissions to agents, and our prices are not dominated by the fence combine. THE FARMER gets the benefit of this enormous saving in the price. There is no middle man provided for in our prices. When we first saw how we could sell a good fence at such a low price; he, basing his comparison on the prices which the fence combine had been compelling him to pay. The enormous growth of our business from the smallest to the largest plant in Canada in three years proves that, we have not only the lowest price, but the best fence made in Canada to-day. Agents resent our direct from manufacturer to farmer policy, and attack the quality of Royal fence endeavoring to induce you to purchase from him a fence on which he can make a commission. We have but one price to every one, no matter how large the order, an order for a 30 rod bale will receive the same careful, prompt attention that larger orders receive. THE FOLLOWING IS OUR GUARANTEE:

IF YOU FIND FOR ANY REASON THAT THE FENCE RECEIVED BY YOU IS NOT OF THE BEST HARD STEEL WIRE, FULL GOVERNMENT GAUGE NUMBER NINE, THE BEST GALVANIZING, THE MOST PERFECTLY WOVEN FENCE YOU EVER PURCHASED AT ANY PRICE, YOU ARE AT LIBERTY TO RETURN IT, AND WE WILL PAY CHARGES BOTH WAYS AND REFUND EVERY CENT OF YOUR MONEY.

Our stock is all bright and fresh, stored in enormous warehouses, and we ship all orders the same day they are received, no matter how large.

5-40 Has 5 line wires, 40 in. high, 9 stays to the rod, all No. 9 hard steel wire. Spacing 10, 10, 10. Price per rod	17c.	9-40 Same as 5-40, with 12 stays to the rod. Price per rod	29c.
6-40 Has 6 line wires, 40 in. high, 9 stays to the rod, all No. 9 hard steel wire. Spacing 7, 7, 9, 9. Price per rod	19c.	10-40 Has 10 line wires, 50 in. high, 12 stays to the rod, all No. 9 hard steel wire. Spacing 3, 3, 3, 4, 5, 5, 6, 6, 8, 8. Price per rod	31c.
7-40 Has 7 line wires, 40 in. high, 9 stays to the rod, all No. 9 hard steel wire. Spacing 6, 6, 7, 7, 9, 9. Price per rod	21c.	11-40 Has 11 line wires, 54 in. high, 12 stays to the rod, all No. 9 hard steel wire. Spacing 3, 3, 3, 4, 4, 5, 5, 6, 6, 8, 8. Price per rod	35c.
8-40 Has 8 line wires, 40 in. high, 12 stays to the rod, all No. 9 hard steel wire. Spacing 4, 4, 5, 5, 6, 6, 7, 7, 9, 9. Price per rod	25c.	12-40P Stock and Poultry Fence Has 15 line wires, 40 in. high, 25 stays to the rod, top and bottom No. 9, all No. 9. Spacing very close for poultry. Price per rod	35c.
9-40 Has 9 line wires, 40 in. high, 12 stays to the rod, all No. 9 hard steel wire. Spacing 4, 4, 5, 5, 6, 6, 7, 7, 9, 9. Price per rod	26c.	Staples, galvanized, 1 1/2 in. per box 50 lbs.	\$1.40
10-40 Has 10 line wires, 40 in. high, 12 stays to the rod, all No. 9 hard steel wire. Spacing 4, 4, 5, 5, 6, 6, 7, 7, 9, 9. Price per rod	27c.	Brace wire (soft), 25 lb. coil, each	75c.
11-40 Has 11 line wires, 40 in. high, 12 stays to the rod, all No. 9 hard steel wire. Spacing 4, 4, 5, 5, 6, 6, 7, 7, 9, 9. Price per rod	27c.	Barb wire, galvanized (two point), 80 rod spools, each	\$2.00
12-40 Has 12 line wires, 40 in. high, 12 stays to the rod, all No. 9 hard steel wire. Spacing 4, 4, 5, 5, 6, 6, 7, 7, 9, 9. Price per rod	27c.	STRETCHER—An all-iron stretcher, top and bottom draw, very heavy chain. Extra single wire stretcher and splicer, freight paid with fence orders only	\$7.50

Farm Gate, made of 1 1/2" tubing, filled with all No. 4.40	Farm Gate 13 x 48 Each	\$4.25	Farm Gate 14 x 48 Each	\$4.50	Wink Gate 3 1/2 x 48 Each	\$3.00
--	------------------------------	--------	------------------------------	--------	---------------------------------	--------

The above prices include freight prepaid by us to any railroad station (electric and heat lines not included), except when ordered shipped with fence.

Customers in New Ontario, Quebec, Maritime Provinces, and the North-West may deduct 5c per rod from the above prices of fence. Write us, tell us what style you want, and we will tell you what your fence will cost you after paying your freight. We have never yet found a locality in the Dominion of Canada where our price for the freight added was not less by a good margin than your local dealer or agent will ask you.

Remit Cash with your order by Registered Letter, Post Office or Express Order.

The Sarnia Fence Company, Limited, Sarnia, Ont.