

**ARE YOU DEAF OR  
HARD OF HEARING?**

If so, get a pair of Tugendhaft's  
**PATENT INVISIBLE EAR DRUMS**  
Which restores hearing immediately.  
#Every Pair Guaranteed.— Price  
\$3.50 per Pair.  
Mail Orders will receive prompt attention

If you are troubled with Weak or  
Sore Eyes and Headaches, you would do  
well to call and have your eyes examined  
free of charge, by an expert Optician.

**M. D. TUGENDHAFT,**  
OPTICAL SPECIALIST.  
406 Bank Street, Ottawa, Can.



**MAIL CONTRACT.**

**SEALED TENDERS** addressed  
to the Postmaster General  
will be received at Ottawa until  
noon on Friday, 28th November,  
1909, for the conveyance of His  
Majesty's Mails, on a proposed  
contract for four years, 12 times  
per week each way between Apple  
Hill and Martintown, from the  
first January next.

Printed notices containing fur-  
ther information as to conditions  
of proposed Contract may be seen  
and blank forms of Tender may  
be obtained at the Post Office of  
Apple Hill and Martintown, and  
at the Office of the Post Office  
Inspector at Ottawa.

G. C. ANDERSON,  
Superintendent.

Post Office Department, Mail  
Service Branch, Ottawa, 11th Oc-  
tober, 1909.

**Rideau Lakes Navigation  
COMPANY  
OTTAWA to KINGSTON**

By the far-famed scenic Rideau,  
the most picturesque inland water  
route on the Continent.

By Rideau Queen on Mondays  
and Thursdays, and Rideau King  
Tuesdays and Fridays, at 2 p.m.,  
from Canal Basin.

Tickets for sale by Ottawa For-  
warding Co. and Geo. Duncan.

**WHY A TRUST COMPANY**

Is the most desirable Executor, Admin-  
istrator, Guardian and Trustee:

"It is perpetual and responsible  
and saves the trouble, risk and  
expense of frequent changes in  
administration."

**The Imperial Trusts**

COMPANY OF CANADA

Head Office 17 Richmond St. West

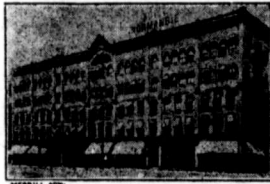
**JOHN HILLOCK & CO.**

MANUFACTURERS OF THE  
**ARCTIC REFRIGERATORS**

165 Queen St., East,  
Tel. 478, TORONTO

<b>4%</b>	Capital Paid Up, \$2,500,000 Reserve . . . 400,000	<b>4%</b>
Money Deposited with us earns Four Per Cent. on your balances and is subject to cheque.		
<b>THE INTEREST IS COMPOUNDED QUARTERLY</b>		
<b>The Union Trust Co., Limited.</b>		
TEMPLE BLDG., 174-176 BAY ST., TORONTO, ONT.		
<b>4%</b>	Money to Loan Safety Deposit Vaults For Rent	<b>4%</b>

DETROIT, MICH.  
**HOTEL NORMANDIE**  
CONGRESS STREET  
Near Woodward Avenue.



American Plan, \$2.50 per Day and upwards.  
European Plan, \$1.00 per Day and upwards.  
Hot and Cold Running Water in all Rooms.  
Rooms with Bath Extra.

A HIGH GRADE CAFE.

Restaurant and Buffet in Connection.

GEORGE FULWELL, Prop.

**HOTEL CUMBERLAND**  
NEW YORK

S.-W. COR. BROADWAY at 54th STREET

Near 50th St. Subway and 53d St. Elevated



Headquarters for  
Canadians.

Near Theatres, Shops  
and Central Park.

New and Fireproof.

RATES

REASONABLE  
\$2.50 with Bath and Up.

All Outside Rooms.

10 MINUTES WALK  
TO 20 THEATRES

Send for Booklet.

HARRY P. STINSON, formerly with Hotel Imperial.  
R. J. BINGHAM, formerly of Canada.



**Synopsis of Canadian North-  
West.  
HOMESTEAD REGULATIONS**

ANY even-numbered section of  
Dominion Lands in Manitoba,  
Saskatchewan, and Alberta, ex-  
cepting 8 and 26, not reserved,  
may be homesteaded by any per-  
son who is the sole head of a  
family, or any male over 18 years  
of age, to the extent of one-  
quarter section of 160 acres, more  
or less.

Application for entry must be  
made in person by the applicant  
at a Dominion Lands Agency or  
Sub-Agency for the district in  
which the land is situate. Entry  
by proxy may, however, be made  
at any Agency on certain con-  
ditions by the father, mother, son,  
daughter, brother, or sister of an  
intending homesteader.

**DUTIES** — (1) At least six  
months' residence upon and cul-  
tivation of the land in each year  
for three years.

(2) A homesteader may, if he  
so desires, perform the required  
residence duties by living on  
farming land owned solely by  
him, not less than eighty (80) acres  
in extent, in the vicinity of his  
homestead. He may also do so by  
living with father or mother, on  
certain conditions. Joint owner-  
ship in land will not meet this re-  
quirement.

(3) A homesteader intending to  
perform his residence duties in  
accordance with the above while  
living with parents or on farm-  
ing land owned by himself, must  
notify the agent for the district of  
such intention.

W. W. CORY,

Deputy of the Minister of the  
Interior.

N.B. — Unauthorized publication  
of this advertisement will not be  
paid for.

**G. E. Kingsbury**

**PURE ICE  
FROM ABOVE**

**CHAUDIERE FALLS**  
Office—Cor. Cooper and Percy  
Streets, Ottawa, Ont.

Prompt delivery. Phone 936

**OTTAWA RIVER NAVIGATION Co.**

MAIL LINE STEAMERS.

**OTTAWA & MONTREAL  
(SHOOTING RAPIDS.)**

Steamer leaves Queen's Wharf  
daily (Sundays excepted) at 7.30  
a.m. with passengers for Montreal  
Excursions to Grenville Tues-  
days, Thursdays and Saturdays  
50c.

To Montebello every week day,  
50c.

Steamer will not stop at East  
Templeton on east-bound trip.

Ticket Offices—Ottawa Despatch  
and Agency Co., 229 Sparks St.;  
Geo. Duncan, 42 Sparks St.; A. H.  
Jarvis, 157 Bank St.; Queen's  
Wharf.

TELEPHONE 242.