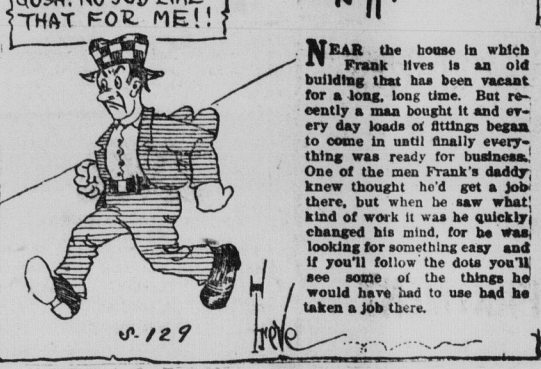


Weekly Chat

Answers To Letters



A HALLOW'EEN SURPRISE

How the Princess Was Cured

Puzzles

and you the grand complete doll's furniture outfit
and then above (over all placed). We pay all delivery
you take no risk as you may return any you
of each commission for what you do sell.
N. C. Co. Dept. F. 12 Toronto, Ont. 20

Moving Picture Funnies



Package. Open
tally our friends
they like them so much that everybody will buy
at once. **"F. B. BARKER'S"** will sweeten
creeds and ease the throat. They are so delicious
Return our money, only \$3.00, when they are all
and you the grand complete set of furniture could
see them, always ready at hand. We pay all delivery
and take no risk as you may return any you
cannot reach conviction for what you do not
want. **Dr. F. B. Barker, Toronto, Ont. 20**

All Free!



SMUGGLERS USE ARMORED CARS ON THE FRENCH BORDER

Use "Tanks" to Get G
Across from Belgium
Nightly Battles.

(Copyright. London Daily
Cross Atlantic.)

Paris, Oct. 29. — Desperate
glens in armoured motor-cars
armed with automatic pistols.

and hand grenades are made
work of the Customs guards
Franco-Belgian frontier very
ous. These cars are laden
bacco, spirits, lace, saccharine
other highly dutiable articles
can be obtained cheaply in
and have ready sale in the por
regions in the north of France

Reorganized since the war, the customs guards have captured some of the cars, but have not arrested the leading members of the gang. Smugglers first send scouts on reconnaissance cycles ahead of the expedition, to see if the way is clear, and, if there are no awkward barriers to

At Balileu the Customs men running fight with the crew of these cars. The smugglers burning cans of petrol into the air behind them to try to stop the frontier guards, however, shot and killed the smugglers.

Another car, in which were six armed with rifles, broke across the frontier at Valenciennes through the hands of the German guards amid a hail of bullets. The car contained three tons of tobacco.

short distance along the road and detachment of Customs men had been warned by telephone and set up a barrier of barbed wire. The truck dashed into this, but owing to the fact that its front axle carried powerful wire-cutting blades, it got through. A chance shot from one of the guards, however, penetrated its petrol

and it was found abandoned
burning a couple of miles away
smugglers escaped.

MOQUIN
O. BEA

AUTHOR

Complete

MAIL ORDER
Send

Address: _____

References: Hunt
and any

TRANSCO

Through
Halifax, Sydney, Cha

Lv. Sydney	8.30 p.m.	A.
Lv. Halifax	8.10 a.m.	A.
Lv. St. John	7.10 a.m.	A.
Lv. Charlottet'n	6.25 a.m.	A.
Lv. Moncton	2.25 p.m.	A.

Ar. Montreal	9.20	a.m.	E
Lv. Montreal	5.00	p.m.	E
Ar. Ottawa	8.00	p.m.	E
Lv. Ottawa	8.20	p.m.	E
Lv. North Bay	5.20	a.m.	E
Ar. Port Arthur	6.05	a.m.	E
Lv. Port Arthur	5.35	a.m.	C
Lv. Fort William	5.55	a.m.	C
Ar. Winnipeg	8.45	a.m.	C

Ar.	Winnipeg	8.40 p.m.
Lv.	Winnipeg	9.40 p.m.
Ar.	Saskatoon	11.25 a.m.
Lv.	Saskatoon	11.45 a.m.
Ar.	Edmonton	11.25 p.m.
Lv.	Edmonton	12.01 a.m.
Ar.	Jasper	9.10 a.m.
Ar.	Pr. Rupert	7.45 p.m.

Ar. Mt. Robson 12.14 p.m.	P.
Ar. N. Westm'tr 8.25 a.m.	P.
Ar. Vancouver, 9.00 a.m.	P.

TRAIN EQUIPMENT;
COMPARTMENT OBSER
 couwer, Standard Sleepers b

DINING CAR between
peg, Winnipeg and Vancouver
TOURIST SLEEPER betw
STANDARD FIRST CL
Steel Equipment

FOR RATES, RESERVE
A. L. GIBB

1910