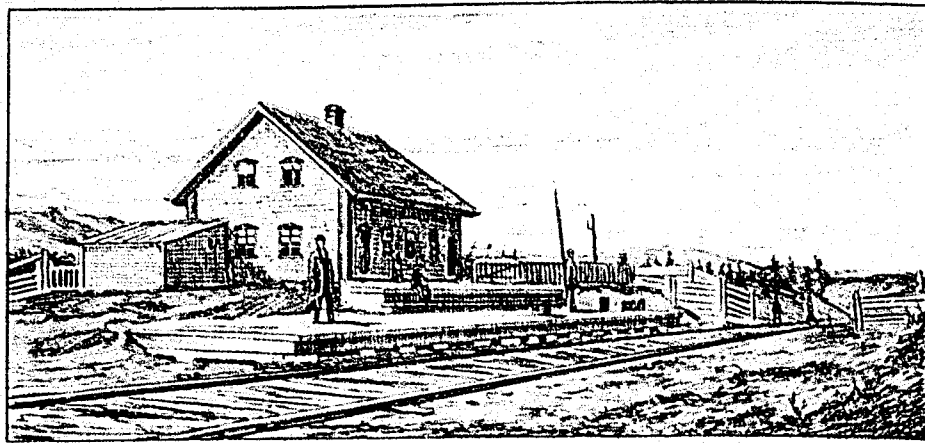


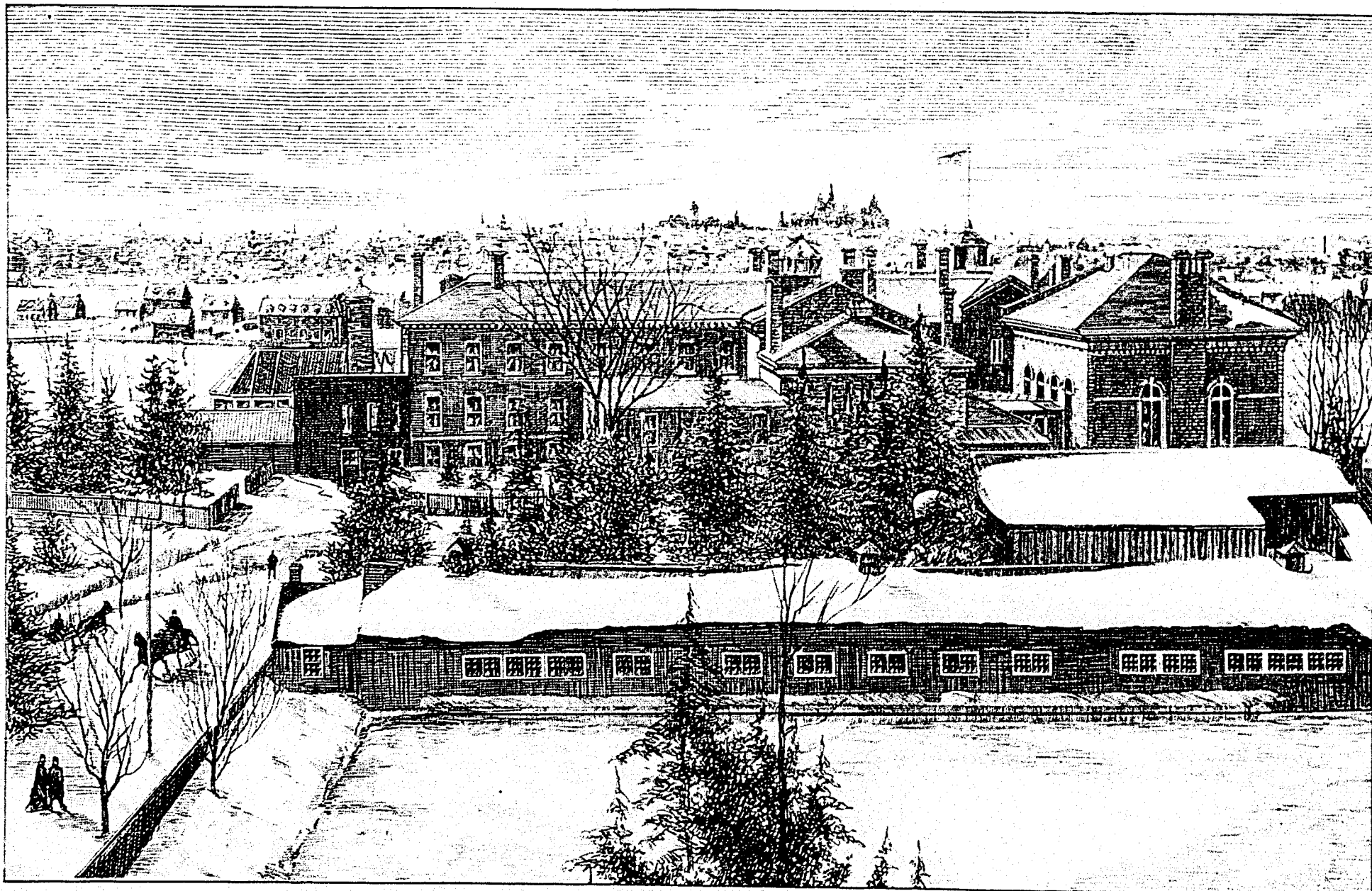
WOODBRIDGE STATION ON THE TORONTO GREY & BRUCE RAILWAY.
From a Sketch by Rev. T. Fenwick.



METIS STATION ON THE INTERCOLONIAL RAILWAY.
From a Sketch by Rev. T. Fenwick.



A CURLING SCENE IN SCOTLAND.



VIEW FROM THE TOP OF THE TOBOGGAN SLIDE AT RIDEAU HALL, SHOWING THE OLD SKATING RINK NOW USED AS A CURLING RINK AND ALL THE BUILDINGS ON GOVERNMENT HILL.