

NEW EXOTIC TIPULIDÆ (DIPTERA).

BY CHARLES P. ALEXANDER, ITHACA, N. Y.*

The following species of crane-flies have been received from various correspondents during the past year.

Genus *Dicranomyia* Stephens.

1829. *Dicranomyia* Stephens; Cat. Brit. Ins., Vol. II, p. 243.

***Dicranomyia fullowayi*, sp. n. (Fig. 8).**

Small, body coloration brown; wings hyaline with grey spots; *Sc* short, ending opposite the origin of *Rs*.

Male.—Length 3.8 mm.; wing 4.8 mm.

Rostrum and palpi dark brown. Antennæ short, dark brown. Head brownish grey.

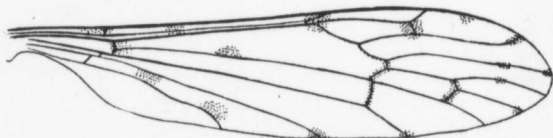


Fig. 8.—*Dicranomyia fullowayi*.

Thoracic dorsum brown without distinct stripes or markings of any kind; postnotum brownish grey. Pleuræ dark brownish black. Halteres light yellow. Legs with the coxæ and trochanters dull yellow; femora brown, paler at the base; tibiæ and tarsi brown. Wings hyaline or nearly so with grey spots as follows: At end of *Sc* and origin of *Rs* at end of *R1* and cross-vein *r*, along the cord and outer end of cell 1st *M2*, a blotch in the middle of cell 2nd *R1* near the costa, a large blotch on vein *R4+5* clouds at the ends of most of the veins, a blotch on *M* before the middle, a blotch at the arculus, two large spots in cell 1st *A* touching vein 2nd *A*. Venation as in figure—*Sc* short ending about opposite the origin of *Rs*, *Rs* half again as long as the deflection of *R4+5* cell 1st *M2* very long, basal deflection of *Cu1* just beyond the fork of *M*.

Abdomen dark brown, the last segment and the ovipositor more yellowish.

Habitat.—Island of Guam, Ladrões.

*From the Department of Entomology, Cornell University.
March, 1915