

possible to secure males outside, as not an individual of either sex could be found. But on September 18 a number of larvæ, varying in size from very small ones to those fairly well developed, were observed in plants in the near vicinity. These plants were transferred to a breeding cage. The larvæ disappeared, and, as they could not escape from the cage, they must have either entered the ground or perished from lack of food,

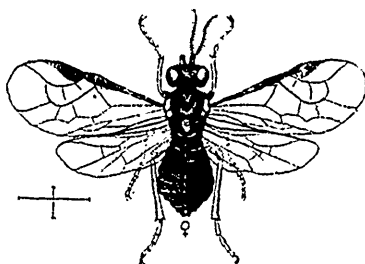


FIG. 1.

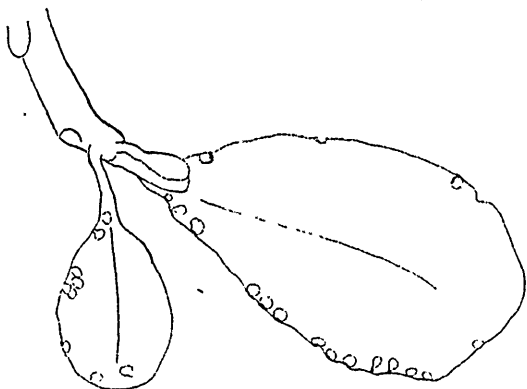


FIG. 2.



FIG. 3.

as might have been the case with the younger, on account of severe frost and freeze September 26, which killed the plants.

On September 30, 1898, quite an extensive search was made for adult sawflies, but none could be found. Found numerous larvæ, varying from real young to full-grown individuals. Numerous adult parasites were found also. The frost killed the plants about this time, thus closing the breeding season.