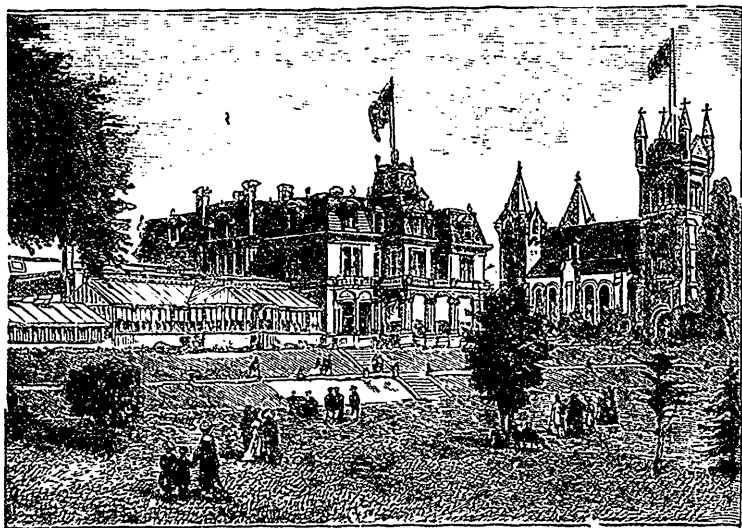


resque hamlets of Todmorden and Agincourt and of the rich farmsteads of Markham and Pickering.

In about three hours we reach the thriving town of Pétterboro', the charm of whose environment makes one long for a more intimate acquaintance. As we advance, the country becomes more rugged and broken, picturesque lakes appear and ledges of primitive rock crop out through the sod, as though the earth were getting out at elbows and the bones were appearing through the skin. Charbot Lake is a charming sheet of water, with bold rocky shores, and dotted with numerous verdure-clad islands.



GOVERNMENT HOUSE, TORONTO.

It fosters one's feelings of patriotic pride to visit the capital of the Dominion. The Parliament and Departmental buildings form one of the most imposing architectural groups in the world, and their site is one of unsurpassed magnificence. Around a lofty cliff, tree-clad from base to summit, sweeps the majestic Ottawa; to the left resounds the everlasting thunder of the Chaudiere, and in the distance rise the purple slopes of the Laurentians. The broken outline of the many-towered buildings against the sunset sky is a picture never to be forgotten. The two finest features of the group, we think, are the poly-