

PRaise SERVICE WINS AUDIENCE

Toronto Soprano Delights Hearers at St. Andrew's Church

APPEARED HERE BEFORE

Singing Wins Applause, Though Silence Was Requested

The semi-annual services of praise at St. Andrew's Church have taken a definite place in the musical annals of the year in London, an enviable and dignified place that no counter-attractions have power to shake.

Twice yearly do Charles E. Wheeler and his choir present a program of organ and choral music and there is no finer nor more inspirational performance throughout the season, always with the complement of an outside singer of note, who never fails to blend in with the spirit of the St. Andrew's program in numbers that are also purely inspirational.

Last night's "autumn service of praise" proved an entirely satisfying one as those who preceded it. Mr. Wheeler is a sincere and discriminating program builder. There must be something to meet the needs of each individual member of his audience, something to lift the trend of local musical taste to a higher plane, something to strike a richly spiritual note, as befitting the sacred building where the singers gather.

To St. Andrew's last night as the visiting artist came Mme. Winifred Lugin Fabey, dramatic soprano, of Toronto, who last season won her London audience in a program presented by the London Women's Music Club, and who last night sealed with her vividly artistic rendition of artistic numbers her welcome to the city.

DRAMATIC NOT TERM.
"Dramatic" as applied to the pure quality of Mme. Fabey's soprano, is no mere term. A voice so crystalline in its clearness may only be saved from coldness by a swift dramatic appreciation of the drama in song, and Mme. Fabey's work lacks no color in the rich clarity of every rounded note.

At her best, perhaps, in the opening number, "Hear Ye, Israel," from the "Elijah," a composition that gave full play to the lower tones of the singer's voice, exquisitely sweet and mellow, Mme. Fabey did brilliant and graphic vocal work in the Bachmannoff poem-song, "O Thou Billy Harvest Field."

It needed not the brief foreword from the singer to bring the audience into sympathy with the passionate plaint of the song, a plaint appreciated rarely by the singer, who caught every vibrant note of the Slavic peoples in her interpretation of the song.

Leading up to a climax that so caught the enthusiastic response of her audience as to make them forget the request of the program that no applause be given, Mme. Fabey sang, by special request, "Rule Britannia," a number to which she had repeatedly given dramatic significance during the years of the war, at open air concerts that were in reality recruiting meetings. Vastly stirring were the fine words and conquering melody, as sounded by this artist singer, sufficient to bring the great audience to their feet and to evoke a round of applause as inspirational in itself as the program that preceded it.

Prior to her closing group of three numbers Mme. Fabey gave a quaint bit of song lore, "The Shepherd," by La Forge, and was heard also in the Del Rio number, "Homing," the lovely appeal of which time cannot stale nor usage dull.

The choir of St. Andrew's sings always devotionally. Always there is a

unit of sympathy, a quick response to the unseen baton of the conductor and a reverential atmosphere that has made St. Andrew's service of praise a service indeed.

Last night's program was full of delights. For an opening number, following prayer by the pastor, Rev. Dr. D. C. MacGregor, there came the Percy Fletcher chorus "Ring Out, Wild Bells," that, for all the subsequent good things, remained by many the outstanding item on the program. Well-balanced parts, precision of attack and release, warm breadth of tone—all these hall marks of good choral work are borne by St. Andrew's chorists, exemplified especially in the final trio numbers that included Chaminade's "Angels," for women's voices and for the most part unaccompanied, with the harp stop sounding a lovely undertone.

MRS. DURST APPRECIATED

Of Mrs. Robert Durst's singing of the Cowen setting to Elizabeth Barrett Browning's poem, "He Giveth His Beloved Sleep," too much praise cannot be given. Mrs. Durst's exceptional contralto, with its sweeping tones and its deep pathos, thrills in response to the appeal in such a poem, and the concluding lines, with the soft chorus of the choir, an indescribably sweet background, shone with a juster of tears.

Again, in the quartette number, "I Will Magnify," by Mosenthal-Klein, with Miss Ulan Kennedy, soprano, A. L. Christiani, tenor, and E. A. Webster, bass, Mrs. Durst appeared in fine voice, the finished and expressive work of the other members of the quartet giving poise and dignity to a brilliant number.

One was happy to find Mr. Wheeler himself on the program, giving his organ numbers, as always, as only an artist may. The first, "Pastoral Suite," by Demarest, displayed the delicacy and whimsical charm in which Mr. Wheeler is so happily at ease, and there came later a second organ group, to which was given a masterly interpretation, most satisfying, "Choral Prelude," by

Parry, an "Ave Maria" (Bach, Gounod), and the Alfred Hollins "Benediction Nuptiale" were Mr. Wheeler's remaining numbers.

An audience, sympathetic and content, practically filled the church. An incident that threatened, for the moment, to mar the serenity of the performance, resulted instead in proving the equanimity of the audience and the control of the singers. A puff of smoke, rising from the moment from one of the registers seemed for the fraction of a second, a signal for a near panic, but, although no explanation was offered, the singers continued unmoved at a note from the organ and the incident was forgotten as the number closed.

WINTER GARDENS.

Grand Halloween masquerade dance to-night.

VIOLA DANA WINS IN LOEW FEATURE

"Glass Houses" Enjoyed by Large Houses

Keen approval of the efforts of Viola Dana and the excellent story in which she appears was manifest at Loew's Theater on Monday, when "Glass Houses," the newest production, released by Metro, was presented for the first time in the city.

Miss Dana appears as Joy Duval, who loses the money she has inherited and is faced with the necessity of going to work. After making herself up as a caricature office type in "sensible" clothes and horn-rimmed glasses, she lands a job as companion to Billy Norton's Aunt Harriet. Returning home late one night she goes to the garage to sleep. Upon awakening she finds that Billy has also been sleeping in the garage. To save her reputation Billy marries Joy.

Her husband believes, however, that she is a notorious crook and tries to persuade her to give up her life of crime. She in turn thinks that he has gone out of his mind and endeavors to soothe him.

They are to be guests at a ball in Hotel Kenilworth, but Billy, still thinking that his wife is the notorious Angel Face Ann, sees a picture of Swan Sullivan, the con woman's husband, who is in prison. Billy insists on going to save his wife from the police. While she is trying to get him home, so that she can have him examined as to his sanity, the real Angel Face appears on the scene.

Three exceptionally clever vaudeville acts, a Campbell comedy, entitled "False Alarm," a Mink and Joe cartoon and a News Pictorial complete the bill for the first half of the week.

Arden, a clever comedian, in the first act, does some wonderful balancing and pedestal work. Burke, Larry and some good singing, while May and Hill, in the last act, offer a good line of chatter and several of the newer songs, which were well received.

THRILLS GALORE IN PATRICIA FEATURE

"The Fast Mail" Presented on Screen in Fine Style

Few screen attractions provide as many thrills or keep the audience so in suspense as does "The Fast Mail," the feature attraction at the Patricia for the first three days of the week. It simply explodes with excitement from beginning to end, the logical development of the story being brushed aside in the many half-raising scenes.

This adaptation of Lincoln J. Carter's stage melodrama, with Charles Jones and Eileen Percy, two fine stars in the leading roles, has almost every sensational feat except airplane stunts. It is the story of a villain who conspires to win a Mississippi steamer by foul means and to capture a Southern beauty in the same way. The fast mail train appears in the picture only as an incident, but there is no need of an express train with the speed which the picture shows.

Charles Jones might well be called the jumping hero in the production. He jumps off his horse in Montana to rescue the heroine. He jumps the hurdles in a steeplechase; he jumps to the fast mail from a speeding handcar and then from the mail back to an automobile. He jumps from one Mississippi steamer to another and is forced to jump from this into the river when it blows up.

Charles Jones is ably supported by Miss Eileen Percy and Adolph Menjou is admirably cast as the villain who is responsible for all the excitement.

The vaudeville end of the program is ably cared for by Russell and Russell in a fine talking, singing and musical turn. The talent of good musicians and their comedy chatter was enjoyed by audiences on Monday.

A two-reel drama, with Tom Satchel adds zest to the program. Neely Edwards, himself a tramp comedian, is the funmaker in a hilarious Star comedy. It is an uproar of laughs and completes a really good program.

WALLACE REID THRILLING PLAY

Popular Star Scores Big in Allen Feature

Wallace Reid scored an artistic triumph in his latest Paramount picture, "The Dictator," which opened with considerable success at the Allen Theater yesterday afternoon. The scenes of this photoplay are located in Latin America and deal with a revolution in which Mr. Reid, as the hero, takes an active and not inglorious part, rising from stoker to commander and winning the heart of an excellent young woman, portrayed by Lila Lee.

Blank cartridges are given the credit of winning the battle which is staged in the picture. This particular scene seems to be convincing proof that morale and confidence more than bullets are the most important factors in the war.

In this scene, from the picture founded on the play by the late Richard Harding Davis, Wallace Reid and an army of rebels of a troop of Mexican country, charge the loyal army, firing volleys of blank cartridges from their guns and turn a near defeat into victory. The government troops do not know the cartridges are blank and, their own ammunition exhausted, they flee like rabbits through the dense smoke. Neither do the rebels know the cartridges they are firing are blanks, but, thinking them to be real bullets, they fire with courage and make a victorious charge.

This is one of the many big spectacular scenes in the new play, which was filmed under the direction of Allen Cruze. More than 1,600 persons were used in the battle scenes. Lila Lee is the heroine, playing the daughter of the rebel leader. Dr. Rivas portrayed by Theodore Kosloff. Others in the cast are Walter Long, Alan Hale and Kalla Pasha.

Presented on the same bill is a pictorial review, a Tonoreville comedy, in which the Skipper takes an active part and special musical numbers by the Allen Orchestra.

The New Velette Dresses, \$25

Unusually Beautiful and Distinctive

Velette, a new silken fabric with a tricolette back, giving that weight and flexibility so desirable with this season's modes. Some very smart styles are shown in this new material, some simply draped, the newest possible styles; straight-line slip-over models, in bobolink, navy, flame, copen and mohawk, faced with contrasting colors. Girdles are fastened with novelty cabochons. A good selection, all one price, \$25.00.

Also a special grouping of smart models, in canton crepe, in navy and black, with draped effects. Priced at \$22.50.

SECOND FLOOR.



Corduroy Lounging Robes

In Attractive Array of Colors

These are of lovely soft quality, in copen, purple or american beauty, made in breakfast coat style and others plain straight models; the collar and cuffs are of self-trimming with stitching, girdle at waist line. Unlined, price \$7.75; lined, price \$13.50.

Quilted Kimonos, Vests and Jackets

Quilted Silk Vests, without sleeves, neat fitting, opening down front with loop and buttons; all shades. Price \$1.49.

Quilted Silk and Satin Boudoir Slippers, trimmed with white fur at top or white pom-pom; in all shades. Prices 96c and \$1.25.

"His Master's Voice" Records, Now 75c

Hear this one:
Why Should I Cry Over You, fox trot;
Blue, fox trot—The Virginians; No. 18933, double side.



YOUR TRAVELING TRAPS

For the Holiday Or Week-End Trip

How much pleasure is added to your holiday trip with the satisfaction of knowing that even your luggage bears the stamp of approval and is in keeping with every detail of fashion. The bags we are showing will add a touch of refinement to your holiday outfit. Our stock of traveling goods is complete. See them in the Basement.



Trunks, Bags and Suit Cases

COWHIDE LEATHER SUIT CASES, made with strong leather corners and straps, with leather and fancy linings, strong brass lock and bolts, dependable cases for hard usage. Prices from \$10.25, \$12.50 to \$42.00.

FIBER SUIT CASES, made on a good strong steel frame, steel corners, locks and bolts, fancy lining. Special at 22-inch, \$1.75; 24-inch, \$1.85, and 26-inch, \$2.00.

FIBER SUIT CASES, made on a strong steel frame, leather corners and inside straps, shirt fold in the lid, sewn-on swing handle, some with heavy cowhide outside straps. Price \$3.75, \$4.00 and \$5.50.

BLACK ENAMELLED SUIT CASES, made on a strong steel frame, heavy black cowhide corners and heavy sewn-on swing handles, fancy cloth lining with shirred pockets in lid and both ends of case. This Case will please the particular women. Prices from \$6.00, \$6.50 to \$9.25; with separate dress tray, prices \$12.00 and \$12.50.

COWHIDE LEATHER CLUB BAGS, made of first quality cowhide leather, strong double handles, heavy leather corners, large English frame, leather lined. Priced at \$15.00, \$19.00, \$21.00 to \$30.00.

GENUINE LEATHER CLUB BAG, walrus or seal grain, heavy nickel-plated lock and drop catches, three-piece bag, heavy sewn-in steel frame, leather lined; 18-inch, at \$13.50, and 20-inch, at \$14.50.

SPLIT COWHIDE CLUB BAG, made of especially fine split leather, brass lock and drop catches, sewn-in leather corner, cloth or leather lined; colors brown and black \$7.00 and \$8.75.

GENUINE LEATHER CLUB BAG, walrus or seal grain, brass lock and catches, heavy cowhide corners, keratol lined. Our special, at \$6.49.

FIBER COVERED TRUNKS, covered and bound with vulcanized fiber, made on three-ply veneer box, fiber lined, heavy brass lock and bolts; an extra strong Trunk, steamer and square sizes \$14.50 to \$30.00.

CANVAS-COVERED STEAMER AND SQUARE TRUNKS, covered with waterproof canvas and bound with heavy hardwood slats, fiber lined. Prices \$8.00, \$9.00 to \$15.00.

METAL-COVERED TRUNKS—This Trunk, which is covered with a light steel and finished in two colors, green and brown, makes a very strong but cheap Trunk. Price \$6.75, \$7.00, \$7.25.

Basement.

ELECTRIC STOVES

And Appliances.

In Basement.

SMALLMAN & INGRAM LIMITED

NOTICE.

All 10-inch His Master's Voice Records
Now 75c.

COUNCIL VISITS POLICE STATION

Will Present Report of Inspection to No. 1 Committee

SURPRISED AT CONDITIONS

Not Fit to Be Used as a Stable, Says Ald. Ashton

Members of the City Council last night visited the police station and inspected the building from cellar to attic and got a good idea of the great need of a new and more commodious building. A report of the visit will be presented to No. 1 committee, and it is the opinion of some aldermen that steps will be taken at once to build a new station or have the matter decided on by the people at the coming election.

No discussion took place after the inspection, but from the general conversation of the aldermen some of them would favor that a new building be taken at once to build a new station.

FAVORS NEW STATION
Ald. John Ashton stated to The Free Press last night that it is not fit for use as a stable, let alone a police headquarters for an up-to-date city such as London.

Ald. Ashton had no idea that the building was in the condition that it is. He said he would favor it being torn down and a new building erected on the present site.

SIGN TRADE PACT TO-DAY.

MADRID, Oct. 30.—A commercial treaty between Great Britain and Spain will be signed to-morrow evening. Minister of Foreign Affairs Prieta will sign for Spain and Sir E. Howard, the British ambassador, for Great Britain.

MAJESTIC OPENS WITH FINE BILL

Beautiful Marie Prevost Scores in Delightful Film

The Majestic Theater, renovated throughout and presenting a new appearance, but with its old, familiar, homelike atmosphere, opened yesterday and the large matinee testified to the popularity of the old house. The entire house, from the freshly painted lobby to the back, is bright and clean, and under the new management will become London's family theater. High-class photoplays, featuring all the big stars before the public to-day, will be the policy of the theater.

Marie Prevost heads the big double bill which will be shown for the first three days of the week. She is seen in an attractive society drama, "Her Night of Nights." A feature of the attraction is the marvelous costumes worn by Marie Prevost. Special mention should also be made of the dancing act stars in the screen farce, "The First Episode of a Thrilling Serial."

Miss Du Pont, who starred in the million-dollar production, "Foolish Wives," is an added attraction in a romantic drama of the jungles, "A Wonderful Wife." Miss Dupont is one of the handsomest women on the screen and is an actress of rare ability.

A rolling snub Pollard comedy closes the three-hour performance. The management is featuring the big double matinee with extra features. The evening two shows are given, at 7 and 9 o'clock. Many surprises are promised for the future and Londoners are urged to adopt the slogan of the theater and "bring the family."

SERVICE SIGN SHOP DOES EXCELLENT WORK

At 402½ Richmond street the Service Sign Shop is forging ahead in splendid style. Opening in the city about a year ago in a small way, the business has developed until to-day its service includes cloth signs, gold lettering, posters, metal signs and show card work. The work is done efficiently and to the satisfaction of the customer. A telephone call (the number is 1322) to The Service Sign Shop will bring confirmation of this.

MAY PROTEST OR DECLINE

MOSCOW, Oct. 30.—The Russian Soviet's reply to the invitation of the allies to attend the Near East conference at Lausanne may take for its strongest protest, or even its refusal.

FORMER CROWN PRINCESS OBJECTS TO THE MARRIAGE

BERLIN, Oct. 30.—The Zeitung Am Mittag states that former Crown Prince Frederick William plans to attend the wedding of his father, former Emperor William, and Princess Hermine of Reuss, but will not be accompanied to Bonn by his wife, who strongly disapproves of the union.

HOPS.

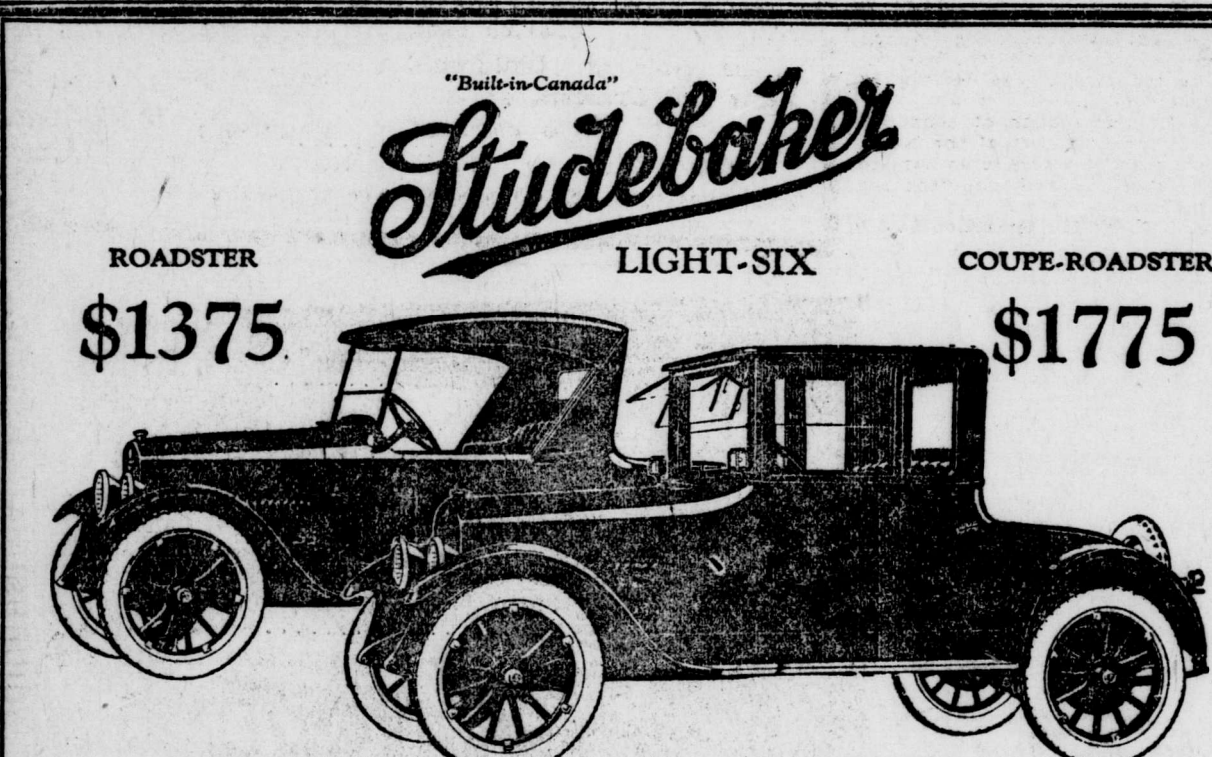
NEW YORK, Oct. 30.—Hops steady state, medium to choice, 1922, 2½c; 24c; Pacific coast, 1922, 16c to 18c; do 1921, 14c to 15c.

Severe Kidney Trouble

Mrs. F. Rinehart, Campbellville, Ont., writes:
"I had trouble with my kidneys and very frequent urination. This was followed by pains which at times were very severe. The doctor said I had inflammation of the bladder and that an operation might be necessary. To this I refused, and began using Dr. Chase's Kidney-Liver Pills. From the first few doses I felt the benefit. The pains left, urination was corrected, and I have had no recurrence of these ailments."

Dr. Chase's Kidney-Liver Pills

One pill a dose, 25cts. a box. All dealers, or Edmanson, Bates & Co., Ltd., Toronto



ROADSTER
\$1375

LIGHT-SIX

COUPE-ROADSTER
\$1775

The Studebaker Light-Six Roadster and Coupe-Roadster were primarily built for business use. In meeting the urgent demands of business, they naturally have fulfilled the needs of the small family.

Each is built for hard usage, day in and day out. And as they are completely Studebaker built—you know they will stand up under hard going.

The bodies are attractive, roomy and thoroughly comfortable for all-day travel. Ample

luggage space is provided under the rear decks.

There's an internal hot-spot to reduce gasoline consumption to a minimum. Valves are inclined at a 20 degree angle to give a new measure of power, greater flexibility and better acceleration. Crank shaft and connecting rods are machined on all surfaces, thus eliminating vibration and insuring longer life to the motor.

Studebaker low prices are made possible by great volume and complete manufacture. Studebaker quality is traditional.

The Studebaker Light-Six Coupe-Roadster seats two passengers, has side coach lamps, rain visor and windshield wiper; eight day clock.

The three-passenger Roadster has cowl lights, storm curtains opening with doors, large plate-glass windows in rear curtain, and inside and outside door handles.

Both models are upholstered in genuine leather; have ample space under the rear deck for luggage; ignition and thief-proof transmission locks, and cowl ventilator.

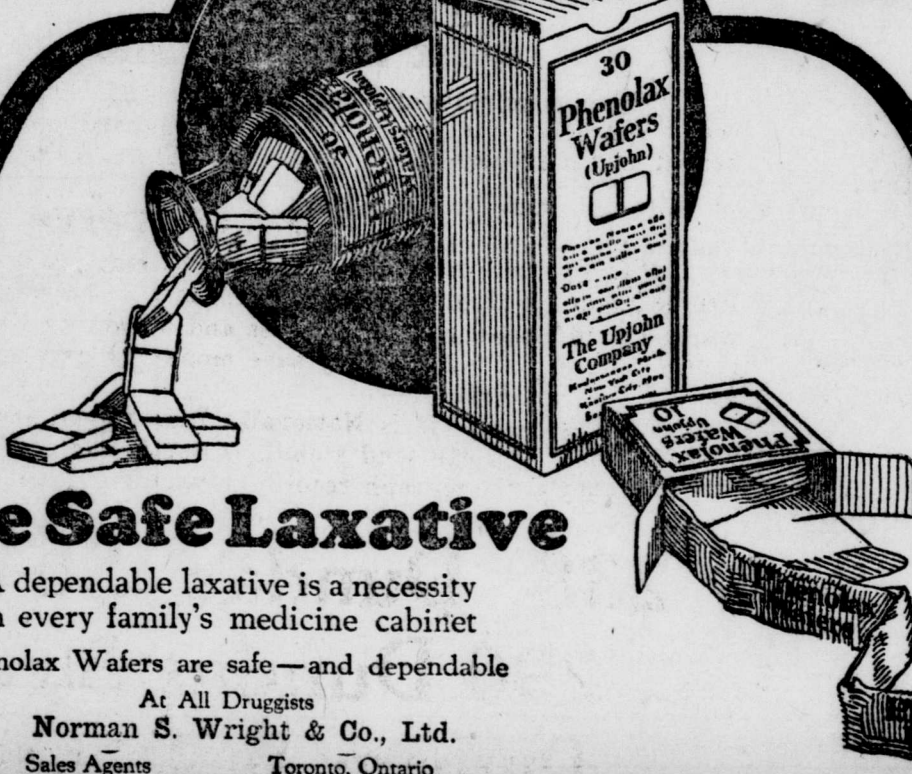
MODELS AND PRICES—f. o. b. Walkerville, Ont.		
LIGHT-SIX	SPECIAL-SIX	BIG-SIX
5-Pass., 112" W. B., 40 H. P.	5-Pass., 119" W. B., 50 H. P.	7-Pass., 126" W. B., 60 H. P.
Touring.....\$1375	Touring.....\$1795	Touring.....\$2275
Roadster (3-Pass.)..1375	Roadster (2-Pass.)..1760	Roadster (4-Pass.)..2500
Coupe-Roadster.....1375	Roadster (4-Pass.)..1795	Coupe (4-Pass.).....3175
(2-Pass.).....1775	Coupe (4-Pass.).....2750	Sedan (4-Pass.).....3375
Sedan.....2225	Sedan.....2950	Sedan (Special).....3550

Cord Tires Standard Equipment

FRANK McLACHLIN
DISTRIBUTOR 86 KING STREET

THIS IS A STUDEBAKER YEAR

Phenolax Wafers



The Safe Laxative

A dependable laxative is a necessity in every family's medicine cabinet

Phenolax Wafers are safe—and dependable

At All Drugstores
Norman S. Wright & Co., Ltd.
Sales Agents Toronto, Ontario