

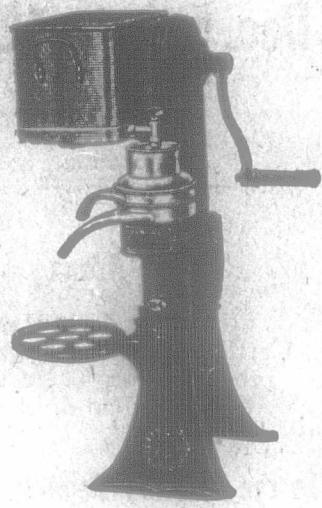
PUBLISHED EVERY WEEK. \$1.50 ^{RECEIVE} PER YEAR.



Vol. XLVIII.

LONDON, ONTARIO, NOVEMBER 27, 1913.

No. 1078

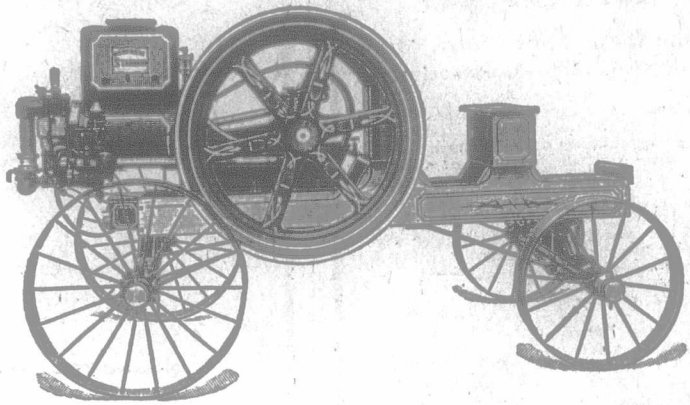


Renfrew Standard

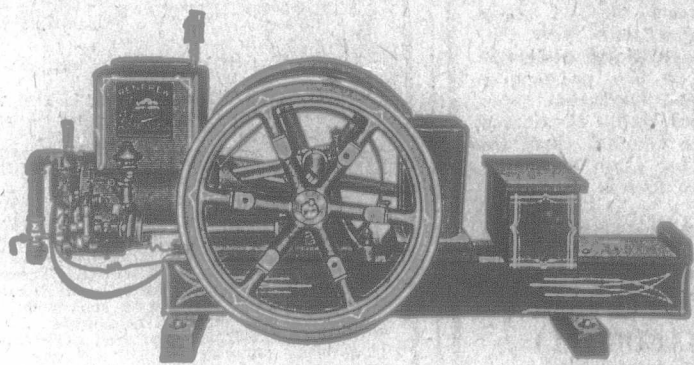
The Big Trio of Profit-Makers

YOU must have the close-skimming Standard Cream Separator if you are to get largest cream profits from your cows. The Standard skims, on the average, down to .01 per cent. The cream is of highest-class because skimmed in an absolutely sanitary bowl. All gears and bearings run in a

bath of oil. Machine requires oiling but once every three months. Low supply can. High crank shaft for easy turning. Made of very best materials in large modern factory. Very latest in design. Write for separator booklet containing complete description and particulars of Government School tests.

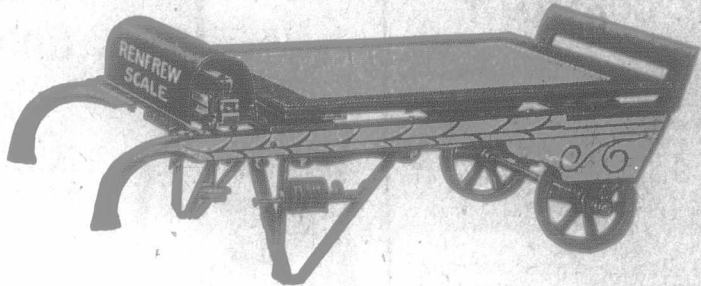


More and more is the Renfrew-Standard Gasoline Engine taking the place of the hired man. Some farmers tell us that they could scarcely get along now without their Renfrew-Standard. This is the engine that aroused so much admiration and enthusiasm at Toronto Exhibition and other



Fairs. It starts without cranking in all kinds of weather. Has governor of fly-ball steam engine type. So perfectly balanced it doesn't need to be anchored down. And many other improvements told about in our engine booklet. Write for a copy. All styles and sizes, from 2½ to 60 h.-p.

A greater necessity than almost anything else on the farm is a good scale. How can a farmer make sure of getting all that his cattle, hogs, sheep are worth unless he weighs them? The Renfrew Handy Two-Wheel Truck Scale has paid for itself on many farms in less than three months. A truck and a scale combined. Designed especially for farm use. Strong, compact, durable, yet light weight. Tested by government for accuracy. Write for scale booklet. It will open your eyes.



THE RENFREW MACHINERY COMPANY, LIMITED
Head Office and Works: Renfrew, Ontario

Sales Branches at Sussex, N. B.; Saskatoon, Sask., and Calgary, Alta.

Agencies everywhere in Canada