

Does.

NO OTHER MOWER WORKS QUOTE SO WELL.

Toronto. London. Winnipeg. Montreal. Quebec. St. John.

IS

STING

THE FARMER'S ADVOCATE

AND HOME MAGAZINE

* AGRICULTURE, STOCK, DAIRY, POULTRY, HORTICULTURE, VETERINARY, HOME CIRCLE *

REGISTERED IN ACCORDANCE WITH THE COPYRIGHT ACT OF 1875.

J. H. Grisdale Exp Farm Dec 15, 00

VOL. XXXV. LONDON, ONTARIO. APRIL 16, 1900. WINNIPEG, MANITOBA. No. 500

Land for Everybody.

Free Grants of Government Lands. Cheap Railway Lands for Sale on Easy Terms.

GOOD SOIL. PURE WATER. AMPLE FUEL. Take your choice in Alberta, Assiniboia, Saskatchewan or Manitoba.

Most desirable land can be obtained in the Beaver Hill District and along the line of the Manitoba and North-western Railway.

In the Prince Albert, Duck Lake and Rosethorn Districts, on the line of the Qu'Appelle, Long Lake and Saskatchewan Railway.

In the Olds District, along the line of the Calgary and Edmonton Railway, about 50 miles north of Calgary.

In Southern Alberta, in close proximity to the Calgary and Edmonton Railway and the Crow's Nest Pass Railway, suitable for mixed farming and ranching on both a large and small scale.

For full information concerning these Districts, Maps, Pamphlets, etc., FREE, apply to

Osler, Hammond & Nanton,
LAND OFFICE,
381 Main St. WINNIPEG, MAN.



FLEMING'S LUMP JAW GURE

LUMP JAW QUICKLY CURED.

A case of lump jaw in your herd means immediate loss; it may mean the infection of the rest of your herd; it may result in the distribution of the germs all over your pastures. All loss and danger can be positively averted by prompt use of

Fleming's Lump Jaw Gure

The only radical cure known. Is endorsed by the most prominent ranchers and shippers of the continent. Easy to use. Is applied externally. One to three applications cure. Leaves jaw sound and smooth. Cannot harm in any way. One bottle usually cures two or three ordinary or one severe case. Price \$2.00. Sold by druggists. Can be sent anywhere by mail.

Money cheerfully refunded if the remedy ever fails.

FREE—Some important reports and an illustrated treatise on Lump Jaw. Write for them.

FLEMING BROS., Chemists,
St. George, Ont.

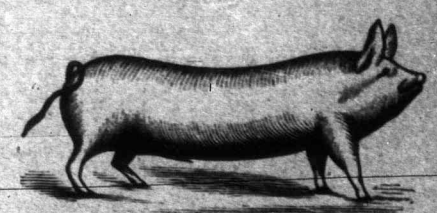
Catalogue Printing our Specialty.

Many of the best Catalogues in Canada are produced by us. Latest type faces, designs, ornaments, and modern machinery.—Best in America. Up-to-date covers designed by special artists without extra charge.

London Printing & Litho. Company, Ltd.,
LONDON, ONTARIO.

CONTENTS OF THIS NUMBER.

| EDITORIAL. | PAGE. |
|--|--|
| THE JUDGES AND THE CATALOGUE | 219 |
| THE SMITHFIELD OF CANADA | 219 |
| PREPARATION FOR SPRING SEEDING | 219 |
| NOVA SCOTIA GOVERNMENT AID TO AGRICULTURE | 220 |
| PROFESSIONAL MEN AND THEIR RELATION TO AGRICULTURE IN CANADA | 220 |
| BOOKS FOR FARM LIBRARIES | 220 |
| STOCK. | |
| CLYDESDALE AND SHIRE AMALGAMATION RECOMMENDED | 220 |
| IMPORTED BULL, GOLDEN FAME—28056—(72610) (ILLUSTRATION) | 221 |
| THE COWBOY | 221 |
| THE USE OF THE WHIP | 221 |
| JUDGING DAIRY BULLS | 221 |
| SWINE FEEDING | 222 |
| COST OF THE U. S. DOG PLAGUE | 222 |
| BARTHORPE PERFORMER (5897) 237 (ILLUSTRATION) | 223 |
| THE COMBINATION STOCK SALES | 223 |
| A STIFF TAX ON DOGS | 224 |
| ANIMAL PORTRAITURE | 224 |
| THE WEANING OF PIGS | 224 |
| PERIODS OF GESTATION | 224 |
| ARGENTINE CATTLE PROHIBITED | 224 |
| COMMENTS ON THE FIGURE | 224 |
| FEEDING EXPORT CATTLE AT THE MOUNT ELGIN (ONT.) INDUSTRIAL INSTITUTION | 225 |
| SHEARING AND WASHING SHEEP | 225 |
| FUNCTIONS OF THE HORSE SHOW | 225 |
| OUR SCOTTISH LETTER | 225 |
| FARM. | |
| UNCUT CORN IN A STAVE SILO | 225 |
| MANAGER HILL GOES TO EUROPE | 225 |
| CLOVER AS A FERTILIZER | 226 |
| SOWING RAPE WITH OATS | 226 |
| FORAGE CROPS FOR HOGS | 227 |
| THE CONSTRUCTION OF A CONCRETE SILO (ILLUSTRATION) | 227 |
| WOMEN'S INSTITUTES | 227 |
| THE \$600-A-TON FOOD ANALYZED | 228 |
| WINDMILL POWER ON THE FARM | 228 |
| VARIOUS FORAGE CROPS FOR SUMMER PASTURE | 228 |
| IMPROVING THE FALL FAIR | 228 |
| ADMISSION AND ENTRY FEES VS. AGRICULTURAL SOCIETY MEMBERSHIP | 229 |
| A NEW MACHINE WANTED | 229 |
| THE SILVER MEDAL FARM | 229 |
| THREE SUGAR BEET DISEASES | 229 |
| BALSAM, 30 FEET HIGH, 16 YEARS OLD (ILLUSTRATION) | 229 |
| MANGEL GROWING | 229 |
| MR. RENNIE'S BOOK | 230 |
| FOR LOADING LARGE STONES | 230 |
| HEDGE OF SCOTCH PINES, 11 YEARS OLD (ILLUSTRATION) | 233 |
| DAIRY. | |
| CHEESEMAKING | 230 |
| BUTTER—FROM THE STABLE TO THE TABLE | 231 |
| FARM TESTS OF COWS | 231 |
| FEEDING FOR MILK | 231 |
| GARDEN AND ORCHARD. | |
| TREE PLANTING ASSOCIATIONS | 231 |
| PREPARING BORDEAUX MIXTURE FOR SPRAYING | 231 |
| CAUSTIC POTASH FOR FRUIT TREES | 231 |
| THE VEGETABLE GARDEN | 232 |
| SPRAYING CALENDAR | 232 |
| POULTRY. | |
| THE NATURAL METHOD—HATCHING CHICKS WITH HENS | 233 |
| HOW TO OBTAIN A FLOCK OF THOROUGHBRED FOWL AT A SMALL COST | 234 |
| QUESTIONS AND ANSWERS. | |
| VETERINARY—RESPIRATORY TROUBLE IN HORSE; CHRONIC INFLAMMATION OF THE LYMPHATIC GLANDS, AND INDIGESTION; INFLAMMATION OF THE BLADDER IN RAM; LAMINITIS; KICK BELOW STIFLE; CEREBRO-SPINAL TROUBLE IN SHEEP; ENLARGEMENTS ON HIND LEG; PLAYFULNESS OF YOUNG PIGS | 234-35 |
| MISCELLANEOUS—GROWING RAPE; OPEN JOINT IN HORSE; SILO FOR SMALL HERD—MIXED GRAIN CROP FOR FEED; KAFIR CORN—HEN MANURE; CROP TO SOW FOR HAY; GROWING BEERWHEAT; GETTING OUT SPRUCE; EWE DISOWNS HER LAMB; STUMP DESTRUCTION BY SALT-PETER A MYTH; RATION FOR BULL—COMMERCIAL FERTILIZERS—GYPSUM FOR CORN AND PEAS; POULTRY AND CLYDE STALLION WANTED; TURNIPY FLAVOR IN CHEESE; DIGGING A WELL IN QUICKSAND; FARMING WITHOUT THRESHING; PREVENTING MOLD IN MILK HOUSE | 235-36 |
| MARKETS. | |
| FARM GOSSIP—LANARK COUNTY, ONT.; A NEW CO-OPERATIVE BINDER TWINE FACTORY | 236 |
| CHATTY STOCK LETTER FROM CHICAGO | 236 |
| TORONTO MARKETS | 236 |
| HOME MAGAZINE. | |
| FAMILY CIRCLE | 237 |
| THE QUIET HOUR | 238 |
| THE CHILDREN'S CORNER | 239 |
| BRINGING HOME THE TURF (ILLUSTRATION) | 240 |
| PUZZLES | 240 |
| GOSSIP | 241, 242, 243, 244, 245, 246, 247, 248 |
| NOTICES | 241, 244 |
| ADVERTISEMENTS | 217 and 218, 241 to 252 |



This is the ideal bacon hog—160 to 200 lbs. live weight. Yorkshire and Berkshire crosses make the best bacon hogs. We buy every Monday and Friday morning, live hogs, delivered by farmers at the packing house, London Junction, and pay the highest price for choice quality.

The LARD is the finest Lard in this country, guaranteed pure. Ask your grocer distinctly for it, and all other goods with same brand are guaranteed by us.

At our Store, next Post Office, you get all kinds of choice cured and fresh pork products, choicest Sausage and Bologna.

THE CANADIAN PACKING CO.,
P. O. BOX 392, LONDON.

You can't do it.

YOU CAN'T MAKE GOOD BUTTER OR CHEESE WITH COMMON, IMPURE SALT. IT PAYS TO USE THE BEST, AND THE BEST IS

Windsor Salt . . .

THE USE OF WHICH IMPROVES FLAVOR AND KEEPING QUALITY.

THE
Windsor Salt Co.
(LIMITED),
WINDSOR, ONT.



"SAFE LOCK" METAL SHINGLES

THE KIND THAT ARE WEATHERPROOF COST LITTLE MORE THAN WOOD SHINGLES AND ARE LIGHTNING AND FIRE PROOF ASK FOR FREE SAMPLES

METAL SHINGLE & SIDING CO.

THE developments taking place in the Lardeau (Kootenay, B. C.) are marvellous. One eminent mining engineer from the Transvaal, who has carefully gone over the mines of Kootenay, says the Transvaal "Simply isn't in it" with our country. "Rob Roy" is a safe investment. Get particulars.

A. E. WELCH, Safe Mining Stocks, LONDON, ONT.