



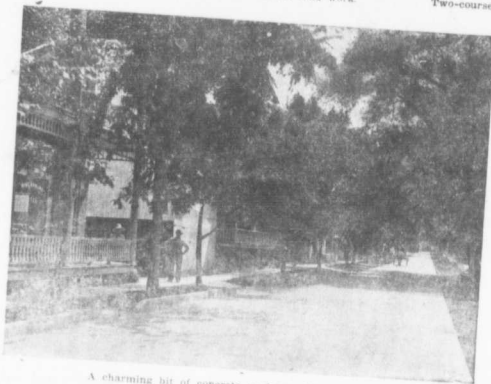
Belgrave Ave., London, Ont. This city has been constructing concrete pavements since 1912.



The type of permanent culverts universally used for road work.



Two-course concrete street, Amherst, N.S., laid in 1914.



A charming bit of concrete road near Montreal, Que.

As Fast as the Facts Can Travel

Only those communities that do not yet know all the facts are still building temporary roads. Wherever ratepayers and road-building officials take the trouble to fully investigate the record of

Concrete Pavements

the result is the immediate adoption of this permanent, modern type of highway. A concrete-paved road permits farmers to reach their markets more quickly, and with heavier loads. It permits them to use automobiles for business and pleasure. It increases the value of their land. It meets every requirement of modern traffic at a cost no greater per year of service than that of muddy, dusty, old-fashioned roads that have none of its advantages. Concrete pavements are being adopted everywhere as fast as facts can be brought to the attention of ratepayers and road officials.

Have the facts yet reached your community? If not, we will be glad to send you our book,

"Concrete Roads"

It tells the whole story. When you're read it, you will be ready to speak with authority whenever the road question comes up for discussion.

Address Information Bureau

Canada Cement Co., Limited

40 Herald Bldg.
Montreal, P.Q.



Section of King Edward Highway, Napierville, Que., before improvement.



Same section of King Edward Highway, Napierville, Que., after improvement.