

Seen in its entirety the set is beautiful. Any young lady who is clever with her needle in the making of lace could, with moderate expense make the set for herself as the pattern of the lace is not difficult and there is little filling-in work.

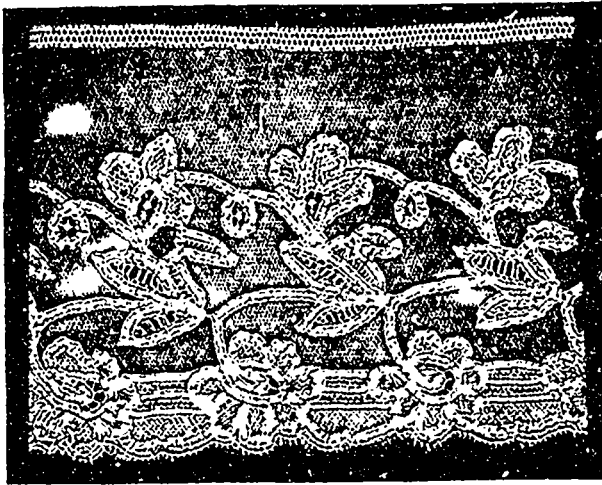


FIGURE NO. 2.—TRIMMING LACE FOR WAIST OF BRIDAL DRESS.
(HALF SIZE.)

If the amateur lace-maker cannot enlarge the designs for herself, she can easily have it done and a small portion of the work begun to show her the method by a professional lace-maker, who will also furnish an estimate of expense and provide proper materials, if so desired.

DOILY IN MODERN FLEMISH LACE.

FIGURE NO. 3.—A new style in lace doileys is here illustrated, and is exquisitely pretty. The design is formed in fine braid

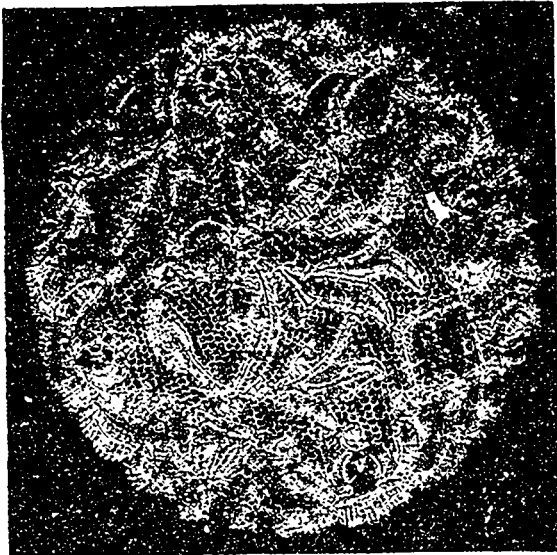


FIGURE NO. 3.—DOILY IN MODERN FLEMISH LACE.

upon a traced design, and then the various portions of it are connected by fine filling-in stitches in various combinations, the Flemish stitch providing the general foundation. In our book on Modern Lace Making which costs 2s. or 50 cents, are many designs for filling-in stitches, the Flemish stitch being among them. This doily, when finished is about six inches in diameter. Hand some table-cloths with Flemish lace borders are very popular among those by whom expense is not considered, and very elegant ones to use upon carved mahogany tables are being made to order. The handsomest of these will be used upon a table with griffins, dragons, reptiles, etc., carved along its border, and the lace border will duplicate the carving in its design.

MEDALLION FOR MARKING NAPKINS.

FIGURE NO. 5.—To relieve the plainness of napkins used upon tables with lace-bordered cloths, lace medallions are being let



FIGURE NO. 4.—TRIMMING LACE FOR SKIRT OF BRIDAL DRESS.
(HALF SIZE.)

into one corner of each. The medallion encircles a piece of the napkin linen on which initials or a monogram are embroidered, and the outer edge is appliquéd to the napkin. The linen under the medallion is cut away thus showing the beauty of the lace perfectly. Battenburg braids are selected for these medallions and with various bar and other filling-in stitches form the

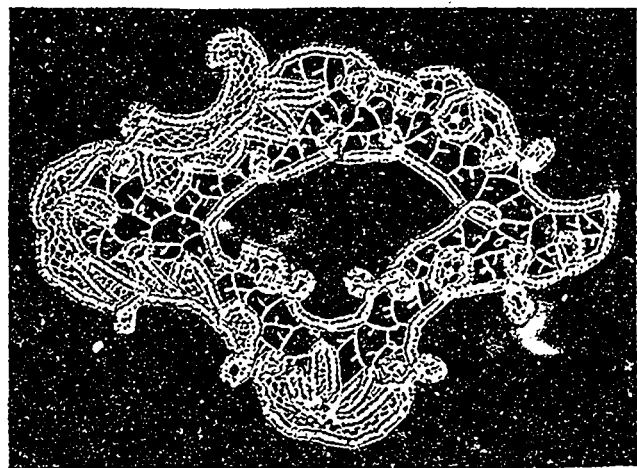


FIGURE NO. 5.—MEDALLION FOR MARKING NAPKIN.

design. The medallion seen at figure No. 5 is one of the most elaborate designs. A simpler one will be given in another issue. For the information contained in this article, thanks are due Miss Sara Hadley, professional lace-maker, 928 Broadway, New York.