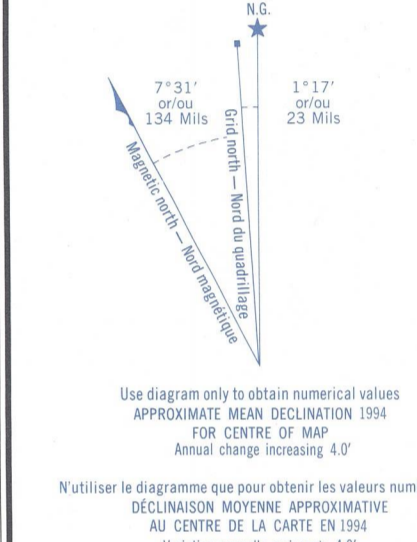
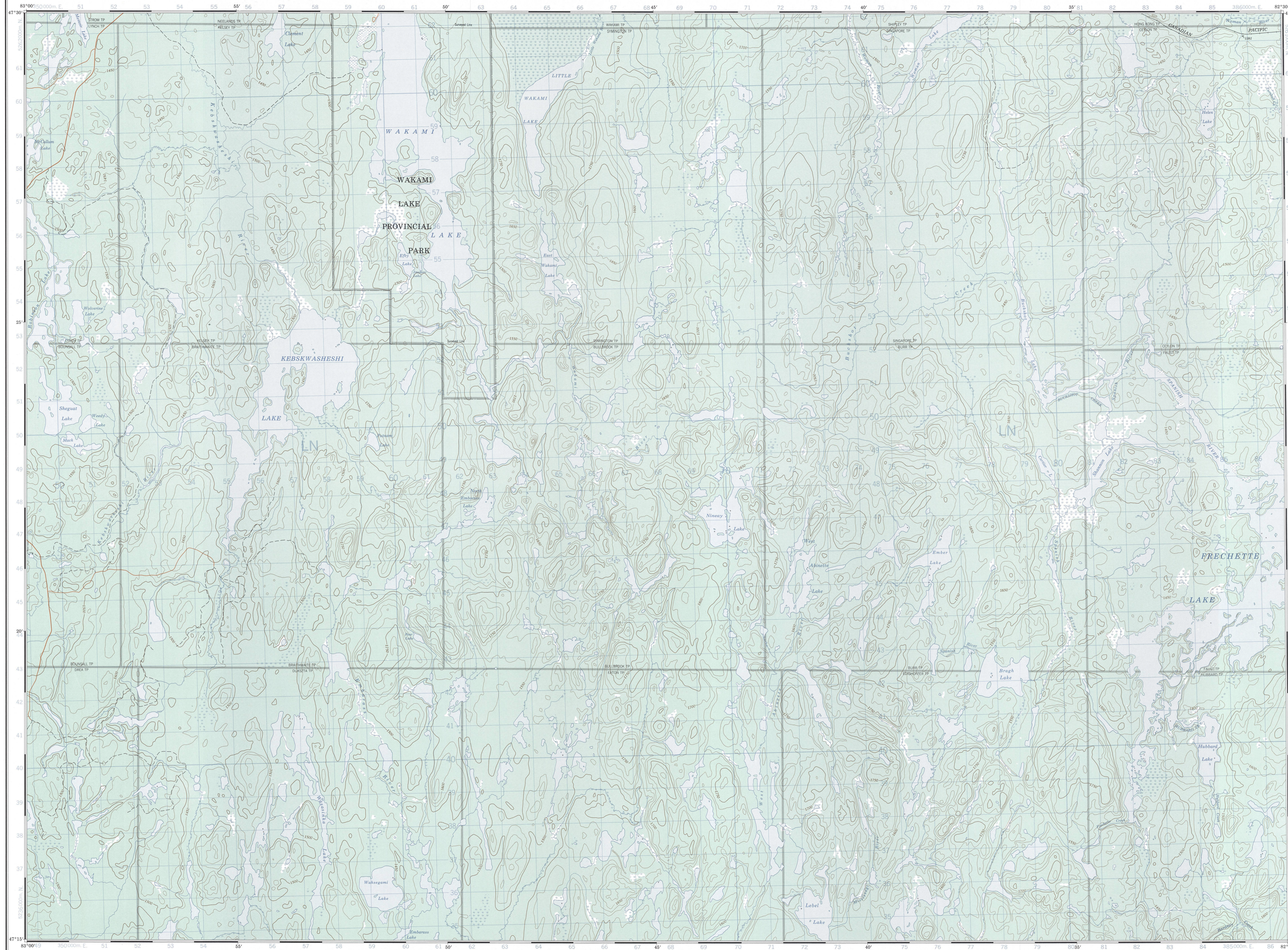
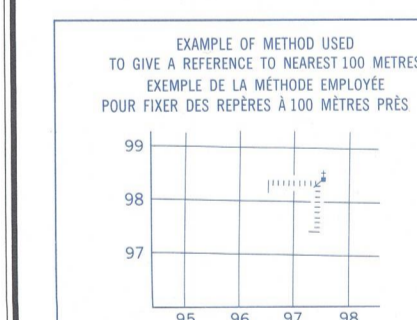


Military users, refer to this map as: **SERIES A 751 SÉRIE**  
 Références de cette carte pour usage militaire: **MAP 41-0/7 CARTE**  
**EDITION 3 MCE ÉDITION**



**ONE THOUSAND METRE**  
 UNIVERSAL TRANSVERSE MERCATOR GRID  
 ZONE 17  
 QUADRILLAGE UNIVERSEL TRANSVERSE DE MERCATOR  
 DE MILLE MÈTRES

GRID ZONE DESIGNATION DESIGNATION DE LA ZONE DU QUADRILLAGE	100 000 m SQUARE IDENTIFICATION IDENTIFICATION DU CARRÉ DE 100 000 m
37 T	LN



**REFERENCE POINT** CHURCH - EGLISE (see above) (voir ci-dessus)  
 POINT DE REPÈRE

**EASTING:** Read number on grid line immediately to left of point.  
 ADDITION: Note the distance of the line to quadrillage immediately to gauche du repère.  
 Estimate tenths of a square from this line eastward to point.  
 Estimate the number of divisions of each side between this line and the repère in direction east.

**NORTHING:** Read number on grid line immediately below point.  
 SUBTRACTION: Note the distance of the line to quadrillage immediately en dessous du repère.  
 Estimate tenths of a square from this line northward to point.  
 Estimate the number of divisions of each side between this line and the repère in direction north.

**GRID REFERENCE:** 37 T LN  
 REPÈRE au QUADRILLAGE: 37 T LN  
 Note: A distance grid reference 100 000 metres. La référence similaire si plus près est à 100 000 mètres.

41-0/1	41-0/2	41-0/3
41-0/6	41-0/7	41-0/8
41-0/3	41-0/2	41-0/1

PRODUCED BY THE CANADA CENTRE FOR MAPPING, DEPARTMENT OF ENERGY, MINES AND RESOURCES. INFORMATION CURRENT AS OF 1992. PUBLIÉE EN 1994. COPIES MAY BE OBTAINED FROM THE CANADA MAP OFFICE, DEPARTMENT OF ENERGY, MINES AND RESOURCES, OTTAWA, ON YOUR NEAREST MAP DEALER.

**WAKAMI LAKE**  
 SUDBURY DISTRICT  
 ONTARIO

Information concerning bench marks and horizontal survey measurements can be obtained from Geomatics Centre, Centre for Surveying, Ottawa, Ontario.

**CONVERSION SCALE FOR ELEVATIONS**  
 Metres 30 20 10 0 100 200 300 400 500 600 700 800 900 1000 Pieds

**ÉCHELLE DE CONVERSION DES ALTITUDES**  
 Mètres 30 20 10 0 100 200 300 400 500 600 700 800 900 1000 Pieds

© 1994. HER MAJESTY THE QUEEN IN RIGHT OF CANADA. DEPARTMENT OF ENERGY, MINES AND RESOURCES.

Roads: loose or stabilized surface, all weather... gravel, aggloméré, toute saison... 2 lanes or more... 1 lane or more... loose surface, dry weather... de gravier, temps sec... 2 voies ou plus... 1 voie ou plus... cart track... de terre... toute non classée ou rail... rail, cut line or portage... sentier, percée ou portage... Pour COMPLETE REFERENCE SEE REVERSE SIDE. POUR UNE LISTE COMPLÈTE DES SIGNES, VOIR AU VERSO

Scale 1:50 000 Échelle  
 Miles 1 2 3  
 Metres 1000 2000 3000 4000

CONTOUR INTERVAL 50 FEET  
 Altitudes in Feet above Mean Sea Level  
 North American Datum 1983  
 Tassement Mercator Projection

ÉQUIDISTANCE DES COURBES 50 PIEDS  
 Altitudes en Pieds  
 Système de référence géodésique nord-américain, 1983  
 Projection transverse de Mercator

ÉTABLI PAR LE CENTRE CANADIEN DE CARTOGRAPHIE, MINISTÈRE DE L'ÉNERGIE, DES MINES ET DES RESSOURCES. RENDUEMENT À JOUR EN 1992. PUBLIÉE EN 1994. COPIES MAY BE OBTAINED FROM THE CANADA MAP OFFICE, DEPARTMENT OF ENERGY, MINES AND RESOURCES, OTTAWA, ON YOUR NEAREST MAP DEALER.

© 1994. SA MAJESTÉ LA REINE DU CHEF DU CANADA. MINISTÈRE DE L'ÉNERGIE, DES MINES ET DES RESSOURCES.

**WAKAMI LAKE**  
 41-0/7  
 EDITION 3 ÉDITION

Energy, Mines and Resources Canada / Énergie, Mines et Ressources Canada