



WHAT TO GIVE AT CHRISTMAS-TIDE



The Holiday atmosphere pervades every nook and corner of our large, roomy stores and showrooms, with their almost limitless suggestions of suitable remembrances for every member of the household—keeping also in mind the soldier lad—for relatives and friends, for folk, indeed, of all ages, from Grandpa down to the wee tots. An early inspection of our vast displays, which embrace the most recent effects in Sterling Silver, Silver Plated, Nickeled and Copper Tableware; also in Cut Glass, will remove every obstacle to an easy solution of the Christmas Gift problem.

Here, too, you will find a most comprehensive range of Fancy Wares, Leather Goods, Skates, Sleds, Snowshoes, Athletic Supplies, Toys, Games, Dolls, Puzzles. Also practical gifts for the housewife.

Then, also, you must visit our Phonograph Department for a demonstration of the most marvellous of musical achievements,

The New Edison

the glorious new art by which the master inventor, Mr. Thomas A. Edison, actually re-creates the vocal and instrumental performances of world renowned musicians so perfectly that you cannot distinguish between the living music and Mr. Edison's Re-Creation of it.

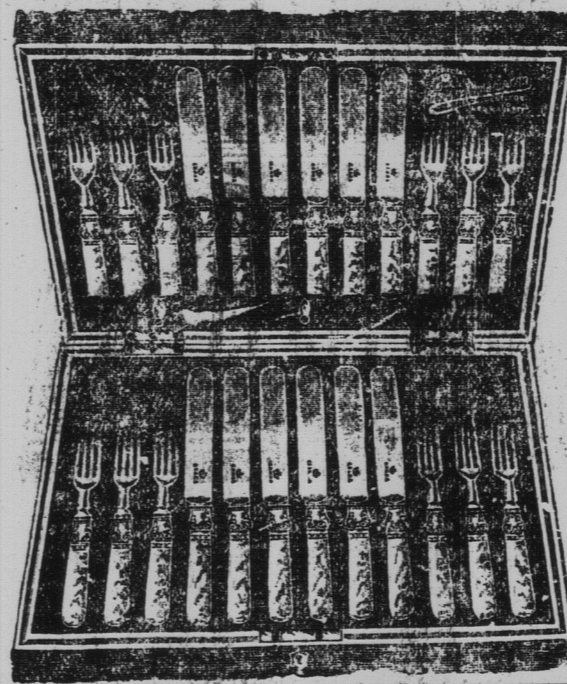
Do Your Christmas Shopping Early - The Earlier You Shop the Better

By starting your holiday shopping at the earliest moment you can make your selections more thoughtfully, and be assured of every attention from the members of our sales staff. Choose the morning hours, if you can manage it; be sure and bring along the little ones. We cannot give you even a fair idea of our offerings in this limited space. However,

Here Are Some Suggestions:

TABLE CUTLERY

Richly Cased Cutlery—sets of 3 and 5 pieces. Fish Sets, Dessert Sets with pearl and with silver handles. Also Fish Servers with pearl, silver, and celluloid handles; Table and Dessert Knives, Spoons and Forks.



Cut Glass for Table and Toilet

Choice Cut Glass is invariably cherished and you have here an exceptionally wide variety from which to make your selections, our display embracing the most recent patterns in Creams, Sugars, Celery Dishes, Jellies, Marmalade Jars, Bowls, Compotes, Oil Bottles, Spoon Trays, Pitchers, Finger Bowls, Decanters, Wine Glasses etc. Also Vases, Pomade Jars, Pin Trays, etc.

Silver Deposit Ware

is also featured in this department, and is very popular for presentation purposes.

Sterling and Plated Tableware

Sterling Silver

Tea Sets, Coffee Sets, Fruit Dishes, Creams, Sugars, Sandwich Plates, Bon-Bon Dishes, Tea Caddies, Toast Racks, Children's Mugs, Knives, Forks, Spoons, Flower Baskets, etc.

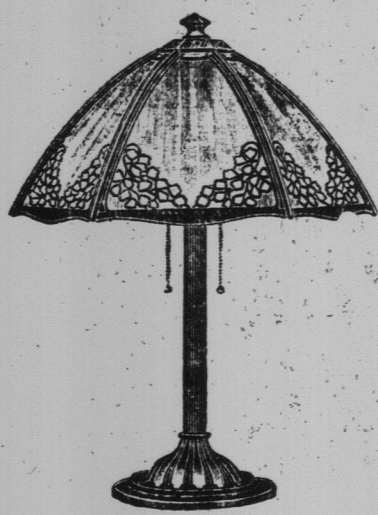
Electroplated Ware

Soup Tureens, Tea Services, Hot Water Kettles, Entree Dishes, Casseroles, Sardine Dishes, Sandwich Plates, Trays, Coffee Urns, Sauce Boats, Salad Sets, Asparagus Dishes, Hot Water Jugs, Flower Baskets, Epergnes, Vases, Fern Dishes, etc.

Toilet Accessories in Sterling

Dressing Sets, Manicure Sets, Brush-Comb-and-Mirror Sets, separate Manicure and Dressing Pieces, Hairpin Boxes and Trays, Jewel Boxes, Perfume Boxes, Puff Boxes, etc.

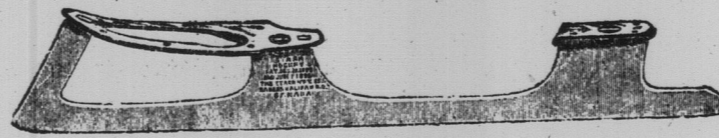
Fancy Wares



Here you will find a select showing of Electric Table, Boudoir, Banquet, Reading and Floor Lamps, in antique and other popular finishes, with art glass and silk shades in many beautiful effects.

ORNAMENTAL BRASSES

Flower Vases, Candlesticks, Plate Stands, Jardinières, Writing Sets, Ink Wells, Blotters, Book Stands, Pen Trays, Smokers' Sets, Cigar Boxes, Match Boxes, etc.



Skates

"STAR"—THE FAVORITE SKATE OF THE MANY.

Ace, per pair, \$1.00; Boys' Hockey, plain, \$1.25, Nickeled, \$1.40; "Bulldog," \$1.65; "Climax," plain, \$2.00; "Climax," Nickeled, \$2.50; "Scotia," Nickeled, \$3.25; "Mimac," Featherweight, \$5.00; "Regal," \$6.00; "Velox," \$6.50; Tubular Hockey, \$6.00; Tubular Racer, \$8.00.

Ladies' Hockey: "Regis," \$3.00; "Glacier," \$3.50.
Whelpley's Long Reach Skates: Boys', \$1.40; Men's, \$2.25.
Woodtop Skates, with toe and heel straps, \$1.25.



Nickeled and Copper Tableware

Nickeled and Copper Coffee Percolators, for electric, alcohol or stove heat. Chafing Dishes in Copper and Nickel, electrically or alcohol heated. Coffee Machines; Nickeled Tea and Coffee Pots.

Coffee Machine Sets, consisting of Coffee Machine, Tray, Cream, Sugar, Coaster and Wind Shield.

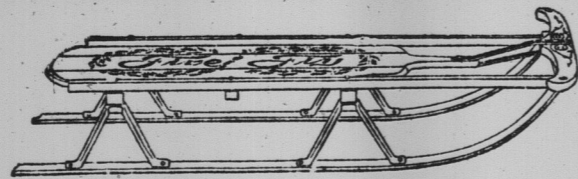
Brass and Hot Water Kettles and Stands; Brass Hot Water Kettles.

Electric Toasters; Grills, Grill Stoves, Immersion Heaters, Heating Pads, Curling Tongs. "Majestic" Heaters.

"Sterno" Solid Alcohol Stoves in various styles, with or without Hot Water Kettles.

Chafing Dishes, Serving Trays, Crumb Trays, in large variety.

Sleds



Sleds

In these our showing is well up to our usually high standard both in variety and quality, and includes

The "Flexible Flyer"	\$4.50 and \$5.25
"Firefly"	\$2.75, 3.25 and 4.25
Paris Safety Sleds	\$1.25, \$1.75 and 2.75
"Victory"	2.10
Framers	From \$1.00 to 2.30
Sleds	From 85c. to 3.25

WAGONS, 90c. to \$21.50. CARTS, 60c. to \$1.15. BARROWS, 55c. to \$2.65
Also VELOCIPEDES, with rubber or steel tires; PIONEER CARS, KIDDIE CARS, etc.



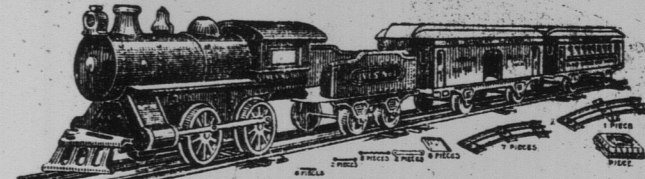
An Eveready Daylo

The Daylo, it is, that, by reason of its powerful Tungsten Batteries and Brilliant Mazda Bulbs has outgrown the name of Flashlight. Splendid Holiday Gifts are Daylos, which, in every walk of life, have become a daily, indeed almost hourly necessity.

There's a Daylo for every place and purpose—the home, store, garage, warehouse, factory, machine shop, boat house, steamer, motor boat, yacht—everywhere, afloat and ashore.

Put Daylos on Your Holiday Gift List

Toys



Toys

An immense variety of the most recent developments in Playthings, including Floor Trains, \$1.00; Mechanical Trains with Tracks, \$2.50 to \$4.25; Electric Trains with Tracks, from \$5.25 to \$14.00. Battleship War Toy, \$1.50; Iron Toys, 60c. to \$6.50; Dolls, from very small sizes to Carnival Dolls, prices ranging from 25c. to \$6.50. Doll Carriages, \$1.25 to \$7.75.

Mechanical Toys, including the Skyscraper Elevator (electric), \$2.75; Panama Pile Driver, \$1.50; "Big Dick" Machine Gun—100 shots a minute—\$8.75.
Dolls' Iron Stoves, 50c. to \$7.00.

Games—In these we offer you a most extensive variety, which embraces the latest novelties and all the old favorites, our display including Across the Continent, Chivalry, Bull-in-a-China-Shop, Boy Scout Ten Pins, Battle of Nations, Battleship Game, Big Game Hunter, Clock Golf, Table Croquet, Carnival Animal Tennis, Sharp Shooters, Ringling Brothers' Circus, Hunting, At the Front, Mexican Bottle Game, and many others, including Checkers, Chess, and all popular Card Games.

Market Square - W. H. THORNE & CO., Limited - King Street

