

# NO MATTER WHICH WAY YOU LOOK YOU'LL SEE THE BEST VALUES AT SIMPSON'S TODAY

Phenomenal Shirt Sale

"Your bosom friends" have never been offered at such astonishing prices. We've just purchased a large floor stock and we're closing out certain lines of our own. That accounts for this chance to get \$1.50 shirts for 68 cents!

N.B.—It is an economical investment to stock up on these—you get three of them for \$2.00.

8700 SHIRTS 68c, 3 FOR \$2.00, ON SALE SATURDAY. Regular \$1.00, \$1.25, \$1.50. We have purchased the entire floor stock of one of the largest shirt manufacturers in Canada of all broken ranges and over-makes of shirts for the fall trade; also the better grades of all the broken ranges of our regular stock, including negligee and outing shirts in fine mercerized cloths; hairline stripes, in blues and blacks; pecanias, percales, madras, Oxford, sephyr and twills, in laundered cuts and coat styles; sizes 14 to 17. Regular \$1.00, \$1.25, \$1.50. Saturday, 68c, 3 for \$2.00.

PURE SILK TIES, 27c, 3 FOR 80c. REGULAR 90c, 75c, \$1. Clearing our better grade stocks of all broken ranges of our regular stock in pure silk ties, in stripes, crepe, bars, failles, crepes, bengalines, satin borders; all-over effects; extra large shapes and lengths. Regular 50c, 75c, \$1.00. Saturday, 27c, 3 for \$1.00.

If You Need One—Baby Carriage Specials

Three-Quarter Size Reed Carriage, strongly built; rubber tires. Special Saturday, \$14.10. Carriers, four-wheel carts, slat sides, with reclining back, at \$13.45. Fancy sides, reed reclining back, \$14.10. Baby Carriage Straps, calf and suede leather, in brown and black. Special \$1.12.

Bathroom Fixtures TOOLS AND CUTLERY AT MONEY-SAVING PRICES, SATURDAY.

Bath Seats, Toilet Paper Holders, Tooth Brushes, Stand Soap Dishes, Saturday, each 35c. Bathroom Mirrors, plate glass, white enamel frames, sizes 6, 8, 10, 12, 14 inches. Glass Shelves, complete with brackets, size of shelf 6 x 15, 18 or 24 inches. White Enamel Bath Seats, 6, 8, 10, 12, 14 inches, adjustable, steel ends, \$1.25 and \$1.50 value. Saturday, .98. Bathroom Medicine Cabinets, white enameled, glass shelves, beveled plate-glass mirror in door. Saturday, .375. Stillion Pipe, Wrenches, 6, 8, 10-inch size, Saturday, .69; 10-inch size, Saturday, .79; 14-inch size, Saturday, .99. "Handy Andy" Face Cups, for removing the stoppage from sinks, basins, etc.; to have one ready saves many a plumber's bill, two sizes. Saturday, .39 and .49. Simpson's Ready Roofing, complete with nails and cement; 108 square feet in a roll; one-ply, 100; two-ply, 1.25; three-ply, 1.50. Worthy (No.) Wrenches, 10-inch size, .25; 10 1/2-inch size, .35; 12-inch size, .45. To clear, Saturday, set 75c.

Clearance of Wall Papers MOLDINGS AND BURLAPS. Tapestry Wall Papers, in green and tan. Regular 25c. Saturday, 15c. Gilt Conventions, for parlors and living-rooms. Regular 20c. Saturday, 10c. Floral Bedroom Paper, roses, in dainty colorings on light grounds. Regular 10c. Saturday, 5c. White and Cream Moulding, Special. 600 Yards of Special Dyed Burlap, green, brown, blue, red and tan. 36 inches wide. Special for Saturday, per yard, 2c. 1-inch White Enamel Moulding, reeded pattern. Special, per foot, 1c. 1 1/2-inch Imitation Oak Moulding, Special, per foot, .1c.

A Big Reduction on Women's Undergarments, Infants' Wear \$1.50 TO \$2.00 CORSETS, \$1.00.

Up-to-date models in "D. & A." "Crompton," "E. T." and the famous "Armstrong" corset, in fine white coutil, medium high busts, very long hips and back, finest rustproof steels, wide side steels, four strong garters, bust draw cords, lace trims; not all sizes in each model, but sizes 18 to 36 inches in the lot. Saturday, . . . . . 1.00

Women's Brassieres, fine batiste or summer net, beautiful embroidery and lace trims, crossed back and hooked front, lace edges on neck and waist; removable shields, summer net model, with or without shields; sizes 34 to 46 bust. Regularly \$1.25. Saturday, . . . . . 75c

Women's Nightdresses, five pretty styles in fine crepes, nainsooks and cotton, high neck, "V" neck and square neck; long, short and kimono sleeves, fine lace embroidery and silk ribbon trims; lengths 56, 58 and 60 inches. Regularly \$1.50 and \$1.75. Saturday, . . . . . 95c

50c AND 65c CORSET COVERS, 33c. Women's Corset Covers, fine nainsook or crepe, yokes of beautiful embroidery and Val. lace, lace edges on neck

STORE OPENS 8.30 A.M.

## The Proudest Boys on Yonge Street Today

will be those who walk out of Simpson's in one of those new suits that we're offering at \$3.85

Their parents should be happy, too, for they'll be getting these bully little suits, some of them for less than half price.

150 Smartly Tailored Suits that we have marked to clear Saturday. These are exceptional values, so be down early; snappy Norfolk and double-breasted styles, with full-cut bloomers; a splendid showing of choice English tweeds, in browns and grays, showing neat weaves; serge body linings in coat; sizes 25 to 33. Regular \$6.00, \$6.50, \$7.00 and \$8.00. Saturday, . . . . . 3.85

SUITS WITH TWO PAIRS BLOOMERS AT \$5.95, REGULAR TO \$9.50.

On Saturday you can buy these Boys' Suits at less than cost, and with each suit you get an extra pair of bloomers to match. Regular fall and winter suiting cloths, in dark gray and browns, stripe and check patterns; serge linings; sizes 26 to 36. Saturday, . . . . . 5.95

### Broken Lots Floor Coverings

\$1.15 English Brussels Carpet at 65c a Yard—This Saturday sale price is far below cost, and is priced to clear a few broken lots in three or four good useful designs suitable for sitting-rooms and bedrooms; bring approximate sizes of rooms with you. Regular value \$1.15. Saturday, yard, . . . . . 65c

65c Scotch Tapestry Stair Carpet at 49c Yard—Not more than about 100 yards, good floral designs to clear at this very low price; 27 inches wide. Regular value 65c yard. . . . . 49c

Well-Seasoned Printed Linoleums, 4 Yards Wide—A choice of several good block, floral and carpet designs in this quality which will give every satisfaction, and this wide width will make it possible for most rooms to be covered without a joint; 4 yards wide. Saturday, at per square yard, . . . . . 55c

Cocoa Fibre Matting Door Mats, 22c Each—A very useful hard-wearing and inexpensive small fibre door mat with colored green and red borders in the three following sizes on Saturday; 14 x 24 inches, Saturday, 22c; 16 x 27 inches, Saturday, 29c; 18 x 30 inches, Saturday, . . . . . 32c

Exceptional Bargains in These Few English Wilton Rugs, \$51.00 Values at \$31.75—Not many designs, but all good and offer a fair assortment for different rooms in the house in various colors; a reliable quality that will give every satisfaction, and priced for Saturday's sale far below cost. Assortment of manufacture today; 6 x 9, 10 x 10, regular \$38.50, Saturday, 12.75; 8 x 10, 10 x 12, regular \$44.50, Saturday, 30.00; 9 x 12, 10 x 12, regular \$51.00, Saturday, . . . . . 31.75

\$2.35 English Axminster Hearth Rugs at \$1.95—A reduction made to clear the remaining three or four dozen of a big shipment of the remaining three or four dark grounds; 30 inches wide; full length. Regular value, 30 x 60 inches, fringed ends. Regular value \$2.35 each. . . . . 1.95

### Curtains and Draperies

Tapestry Curtains at \$2.69 Pair—A well-finished tapestry pattern, heavily fringed top and bottom; green, red or mixed red and green; full length. Regular \$4.00 pair. Saturday, pair, . . . . . 2.69

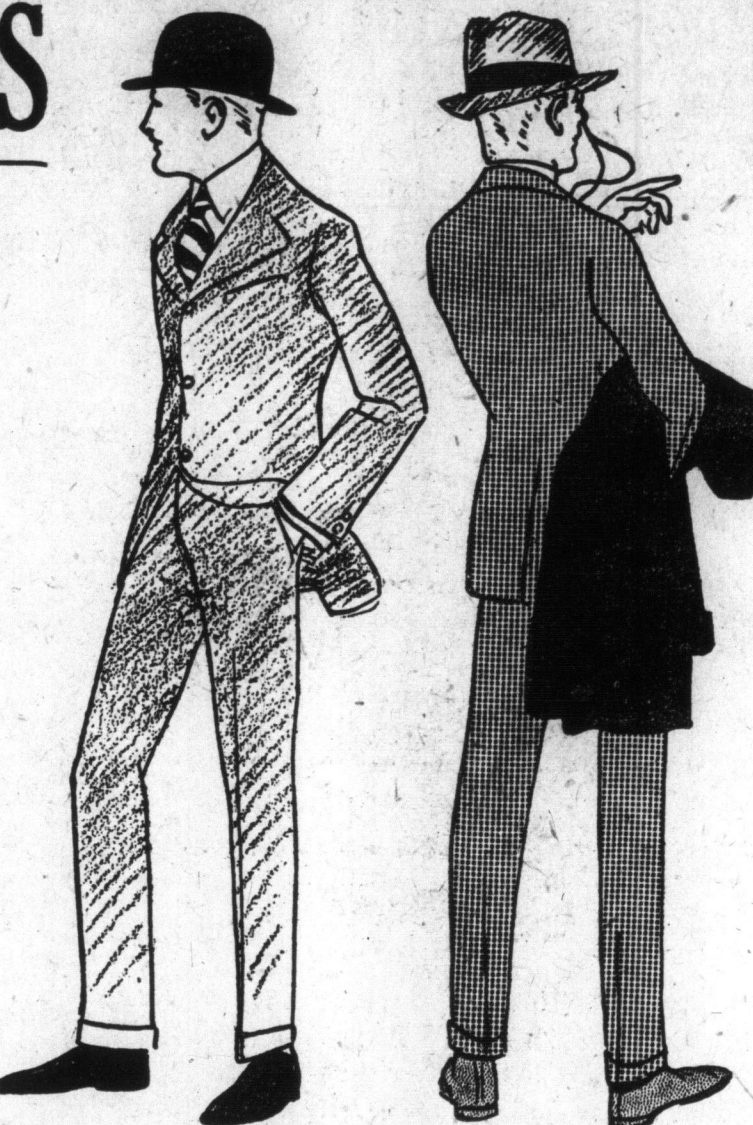
English Cretonnes at 18c Yard—A heavy quality English cretonne, printed in rich, bright colorings on dark grounds; 30 inches wide; suitable for covering cushions or chairs. . . . . 18c

English Curtain Nets at 23c Yard—A number of neat designs in white or ivory, suitable for bedroom or living-room windows; 45 and 60 inches wide. Regular 45c yard. . . . . 23c

American Chintzes at 39c Yard—A beautiful collection of color combinations suitable for curtains or slip covers for the living-room or bedroom, 36 inches wide. Saturday, yard, . . . . . 39c

American Curtain Scrims at 33c Yard—An ideal material for window curtains in the living-room, dining-room or bedroom; 40 inches wide; some with neat hemstitched border effects in white or cream. Saturday, yard, . . . . . 33c

Nottingham Lace Curtains at 95c Pair—A few specially priced lace curtains, 2 1/2 yards long; white only; neat lace borders with spray centers. Saturday, special, all price, . . . . . 95c



### Half a Carload of High-Grade Boots, Reg. \$4.50 to \$7.00, for \$2.99

"DON'T ADVERTISE THE BRANDS, and we'll sell you half a car load of the best known men's boots in Canada, at your own price," said a big manufacturer. We took his sample stock and canceled orders at one gulp—and the result is this great buying chance for you Saturday.

MEN'S \$4.50 TO \$7.00 BOOTS, SATURDAY, \$2.99—Half a carload Military, Dress, Street, Office, Walking, Golf, Bowling and Light-weight Evening Boots; button, Blucher, elastic and English lace styles; tan, box, storm, gunmetal, velour and mahogany calf, French, vici and dongola kid, patent colt and calf, and kangaroo leathers; light, medium and heavy soles; some are spiked for sporting purposes; popular heel shapes; plain and toecap vamps; straight, swing, foot-form and broad foot lasts; dull calf, bright kid and cloth tops; a style to suit any and every man; widths C to EE; sizes 5 to 11. Regular \$4.50 to \$7.00. See window display. Saturday, . . . . . \$2.99

WOMEN'S BOOTS, \$1.99, SATURDAY. 1200 pairs; all sizes; several widths; samples and surplus stock from leading makers; button, Blucher and military lace boots; patent, dull calf and vici kid leathers; four sole weights; ten heel shapes; eight toe styles; plain and toecap vamps; new colored cloth and dull black leather uppers; latest foxings; patent and military braid trimmings; sample sizes 3 1/2 to 4 1/2; surplus stock sizes 2 1/2 to 7. Regular \$3.50 to \$5.00. See window display. Saturday, . . . . . 1.99

BOYS' BOOTS, SATURDAY, \$1.99. Sizes 1 to 5 1/2; 1100 pairs New Fall and Winter Boots, in Blucher style; made of gunmetal calf, English box kip, whole stock grain calf and vici kid leathers; heavy double and lightweight dress soles; military and low heels; neat round and extra full toe shapes; some styles are water-proof. Regular \$2.29 to \$3.50. On sale Saturday, . . . . . 1.99

CHILDREN'S BOOTS, 99c SATURDAY. Genuine Dongola Kid Button Boots, with patent leather toe-cap, and flexible full weight McKay soles; low and spring heels; Baby Doll and Educator toe shapes; dressy, comfortable, durable boots; sizes 5 1/2 to 10 1/2. Regularly selling at \$1.25. On sale Saturday at . . . . . 99c

TOMORROW MAY BE RAINY! 90c and \$1.25 Editions Novels for 50c "Amateur Gentleman," by Jeffrey Farnol; "Kilmeny of the Orchard," by L. M. Montgomery; "Fortunate Youth," by W. J. Locke; "Inside of the Cup," by Winston Churchill; "Behind the Beyond," by Stephen Leacock; "Stella Maris," by W. J. H. Abbott; "Little Eve Edgerton," by E. H. Abbott. Cloth bound. Special, all Saturday, all price, . . . . . 50c Phone your order early. Only a limited number of each title.

### Rich Silk Crepe de Chine Blouses

\$5.00 VALUES AT \$2.95. Five designs as specified below; all made up in our heavy crepe, which has proved so satisfactory in wear.

- No. 1—Colored crepe with open front; the vest is of a contrasting color, such as rose with gold vest, smart double-hooded collar at back and hemstitched Raglan shoulders.
- No. 2—Heavy velvet crepe, open front with jeweled buttons, low cut "V" neck with pleated ruche border, two rows of ruching on each side of front, with double cuffs to match.
- No. 3—Severely plain tailored effect, open front with low turnover collar and piped yokes, long sleeves and fancy cuffs.
- No. 4—Smart effective blouse, the open front, with wide hemstitched yoke round edge of low collar and front, long sleeves trimmed ribbon velvet.
- No. 5—A pretty blouse with open front and low turnover collar, fastened with crystal buttons and finished with ruche of crepe down to waist line, ruched cuffs to match front; ivory, black, navy, rose, Belgian blue, old gold, sky, pink, amethyst and brown. Regular \$5.00. No phone or mail orders. Special, Saturday, at . . . . . 2.95

### Here's Great News For Men!

If you have been thinking of the New Fall Suit, you're going to meet a great chance at Simpson's Today.

### Just 200 Suits to Sell—

At a price that seems unreasonably low, considering the present cost of these excellent materials. Saturday's \$9.95 is just about half what price of like these—in fact, doubling this price would still not be as much as the regular price of some of these suits.

200 Men's High-Grade Suits, consisting of fine fancy worsteds, in fall weights, neat stripe patterns, black grounds with white hairline stripes; also rich brown tartan checks and some plain black Clay twills, and gray pick-and-pick worsteds; all choice goods that any gentleman would be proud to wear; they are cut on the popular two and three-buttoned, single-breasted sack style, with natural shoulders and soft roll lapels, splendid fitting; sizes 36 to 44. Regular \$15.00, \$18.00, \$20.00 and \$22.00. To clear Saturday at . . . . . 9.95

### These Prices on Beds and Bedding Are Creating Great Enthusiasm FIFTH FLOOR

Brass Trimmed Iron Bedstead, Mattress and Springs Complete. Regular \$16.00. Sale Price \$10.45. Bedstead—White enamel, iron top rail, brass caps and uprights; neatly designed husks. Mattress—Filled with all pure cotton felt, tufted and covered in art ticking. Bed Spring—Steel tube frame, strong woven steel wire springs, supported by steel bands. Regular \$10.00. Sale price . . . . . 10.45

Brass Bedstead, Mattress and Bed Spring, Complete. Regular \$22.75. Sale Price \$16.00. Bedstead—Heavy 2-inch posts, turned caps and evenly divided fillers, in satin, bright or polette finishes. Mattress—Filled with all-cotton felt, carefully selected, stitched edges, neatly tufted, and covered in fine art ticking. Bed Spring—Frame is made of steel tubing, springs are woven steel coil wire, well supported. Regular \$22.75. Sale price 16.00

Brass Bedstead, Mattress and Bed Springs, Complete. Regular \$49.50. Sale Price \$31.55. Brass Bedstead—Has 2 1/2-inch posts, extra heavy fillers, in bright, satin or polette finishes. Mattress—Extra heavy, filled with all pure cotton felt, carefully selected and built in layers. Bed Spring—Steel tube frame, special finely woven steel wire, steel rope edge, fully guaranteed. Regular \$49.50. Sale price . . . . . 31.55

Brass Bedstead, has 2-inch posts, uprights and top rails, very massive and beautiful design in polette finish, 4 1/2 size only. Regular \$47.00. Sale price . . . . . 36.00

Brass Bedstead, heavy 2-inch posts, square top rails and uprights, pierced panels, in polette finish, 4 1/2 size only. Regular \$54.00. Sale price . . . . . 45.00

Brass Bedstead, 2-inch continuous posts and closely divided fillers, in bright, satin or polette finishes. All sizes. Regular \$38.50. Sale price . . . . . 30.00

Brass Bedstead, 2-inch posts, neatly turned caps and heavy fillers, 4 1/2 size only. Regular \$22.50. Sale price . . . . . 14.95

Brass Bedstead, has double top rails and well designed mounts in bright, satin or polette finishes. All standard sizes. Regular \$32.50. Sale price . . . . . 19.95

Mattress, filled with all cotton felt, built in layers, carefully selected, neatly tufted and covered in art ticking. Regular \$3.50. Sale price . . . . . 2.60

Bed Spring, steel frame, made of steel wire springs, well supported, all standard sizes. Regular \$4.25. Sale price 2.90

Bed Spring, frame is made of thick ribbed steel, 4 1/2 size only. Regular \$3.50. Sale price, 2.60

Bed Spring, strong woven steel springs, supported by steel bands; all sizes. Regular \$2.00. Sale price . . . . . 1.45

Notions on Sale Sewing Thread, Clapperton's make, 200-yard, 6-cord, all sizes, 10 to 100 white, 10 to 70 black. Regularly 85c doz. Sale price, dozen . . . . . 63c

350-Yard Sewing Silk, black only. Sale price, . . . . . 22c

Dexter's Darning Cotton, black, tan, white. Regularly 8c ball. Sale price, ball . . . . . 5c

Hooks, Eyes and Loops, black and white, all sizes, rustproof. Regular 4c card. Sale price, 3 for . . . . . 10c

Buttons, pearl, 2 and 4-hole, sizes 12 to 24 line. Regularly 10c and 12 1/2c dozen. Sale price, dozen . . . . . 5c

Weighted Tape, black and white. Regularly 10c yard. Sale price, yard . . . . . 7c

Mending Wool, black only, best cashmere wool. Regularly 3 for 5c. Sale price, doz. 12c

Pad Hose Support, more silk faced. Regularly 25c pair. Sale price, pair . . . . . 17c

Buttonhole Sicilians, 2 1/2 and 4-inch. Sale price, pair 25c

### A Thousand New Hats at a Dollar

All new and popular styles, fall and winter designs; green, navy, brown, slate and pearl in the Soft Hats, and black only in the Stiff Hats. This lot consists of 1/4 dozen, 1/2 dozen, and 1 dozen, balances after orders have been completed; excellent quality and finish. Regular prices \$1.50, \$2.00 and \$2.50. Saturday's special price . . . . . 1.00

Men's and Boys' Caps, in tweeds, serges, worsteds and fancies; new golf shapes, with or without bands; silk lined and leather sweats. Saturday special . . . . . 45c

### \$2.50, \$3, \$3.50 Umbrellas \$1.79

Umbrellas, with extra fine quality silk-mixed covers, with tape edge, mounted on neat rolling frames; handles are a manufacturer's clearing of high grade odds and broken lines, with sterling silver or rolled gold trimmings. Saturday, one price, at . . . . . 1.79

### Housekeepers!

Note carefully the prices on Pillow Cases, Sheets, Comforters, Blankets and Table Cloths mentioned here; then come at 8.30 a.m. to secure them.

1000 Pairs of Plain Hemmed Pillow Cases, sizes 42 x 38 and 44 x 38 inches. Rush price Saturday, 5 pairs for . . . . . 99c

Bleached Sheets, plain weave, extra large size; 80 x 100 inches. Regular \$2.50 pair. Clearing Saturday, pair . . . . . 1.78

Buy Comforters Saturday, 98c—Reversible cambric covering filled with pure white sanitary cotton; good range of colorings; size 70 x 70 inches. Will fill phone orders while quantities last! Saturday only, each . . . . . 98c

Plain White English Flannel-ette, heavy making, extra large double beds; size 70 x 84 inches. Rush price Saturday, pair, . . . . . 1.25

White Union Wool Blankets, warm and serviceable; size 72 x 84 inches. Regular \$4.25 pair. Clearing Saturday, pair . . . . . 3.69

Clearing of Odd, Soiled and Imperfect Damask Table Cloths, all pure linen, range of pretty bordered designs; two sizes, 7 x 12 and 8 x 12 inches. Regular \$3.00 and \$3.25. Rush price Saturday, . . . . . 1.98

Turkish Bath Towels, large size, heavy making, your choice in plain white or fancy stripes. Saturday, 3 pairs for . . . . . 1.00

Serviceable Huckaback Bedroom Towels, size 18 x 35 inches, finished in plain white. Regular Saturday, pair . . . . . 25c

Builders' Duck, 30 inches wide. Regular 20c yard. Saturday, 15c yard. . . . . 15c

All-Wool Gray Flannel, soft quality; 27 inches wide. Saturday, yard . . . . . 28c

### THE MARKET

Telephone Direct Adelaide 6100

Forequarter of Spring Lamb, per lb. . . . . 13c  
Loin of Spring Lamb, per lb. . . . . 12c  
Leg of Spring Lamb, per lb. . . . . 12c  
Porterhouse Roast of Beef, per lb. . . . . 28c  
Wing Roast of Beef, per lb. . . . . 25c  
Rib Roast of Beef, per lb. . . . . 22c  
Thick Rib Roast of Beef, per lb. . . . . 18c  
Blade Roast of Beef, per lb. . . . . 15c  
Round Shoulder Roast of Beef, per lb. . . . . 15c  
Thick Shoulder Roast of Beef, per lb. . . . . 14c  
Simpson's Pork Sausage, per lb. . . . . 15c  
Back Bacon, lean and mild, per lb. . . . . 26c  
Breakfast Bacon, sliced, per lb. . . . . 28c  
E. B. Pure Lard, 5-lb. pails, gross weight, per pail 45c  
Easifirst Shortening, 3-lb. pails, gross weight, per pail . . . . . 39c

FRUIT AND VEGETABLES.  
Late California Valencia Oranges, per dozen . . . . . 36c  
California Seedless Lemons, per dozen . . . . . 18c  
Sweet Potatoes, 6 lbs. . . . . 15c  
Celery, per bunch . . . . . 25c

NEW CUT FLOWER SECTION.  
500 Fresh Cut Roses, pink, red or white, dozen . . . . . 35c  
500 Dahlias, assorted colors, dozen . . . . . 40c  
Fresh Cut Carnations, dozen . . . . . 45c  
Lily of Valley, dozen . . . . . 35c  
Gladioli, assorted colors and long stems, dozen . . . . . 35c  
Artificial Roses, Asters, Poppies, and many other varieties, 20 and 30 inches high, each . . . . . 30c  
Japanese Wood Fibre Carnations (very new), dozen . . . . . 30c  
Artificial Nasturtiums in sprays of foliage and one dozen . . . . . 30c  
Japanese Alp Ferns (everlasting), 2 bunches . . . . . 15c  
Artificial Palm, 20 and 30 inches high, each . . . . . 15c  
We do not guarantee prices on these goods at moderate prices.

CANDY SECTION, MAIN FLOOR AND BASEMENT.  
500 lbs. Assorted Chocolates, fruit flavors, regularly 30c per lb. . . . . 25c  
1000 lbs. Lady Cakes, 2 lbs. per box, regularly 25c per lb. . . . . 25c  
1000 lbs. Quaker Chewing Candy, 2 lbs. per box, regularly 25c per lb. . . . . 25c

THE GROCERY LIST.  
Telephone Direct to Department, Adelaide 6100.  
2000 lbs. Fresh Creamery Butter, White Clover Brand, per cwt. . . . . 32c  
Toasted Cornflakes, 3 packages . . . . . 25c  
Loaf Sugar, 3 lbs. . . . . 25c  
Clark's Pork and Beans, 5 packages, large tin . . . . . 25c  
Finest Canned Lobster, 1/2-lb. tin . . . . . 25c  
Finest Canned Corn, 5 packages, 1/2-lb. tin . . . . . 25c  
Baker's Cocoa, 1/2-lb. tin . . . . . 25c  
Horseshoe Salmon, 1/2-lb. tin . . . . . 25c  
Finest Canned Corn, 5 packages, 1/2-lb. tin . . . . . 25c  
Garson's H. F. Sauce, bottle . . . . . 25c  
Crosse's Hot Brand Mustard, 2 bottles . . . . . 25c  
Choice Olives, stuffed or plain, bottle . . . . . 25c  
Pure Gold Salad Dressing, 16 oz. package . . . . . 25c  
Finest Mild Cheese, per lb. . . . . 25c  
Finest Canned Fruit, Raspberries, Strawberries and Cherries, per tin . . . . . 15c  
500 lbs. Christie's Shortbread, per lb. . . . . 25c  
Delton's Lemonade Syrup, 3 packages . . . . . 25c  
Pure Gold Jelly Powders, assorted, 3 packages . . . . . 25c  
500 lbs. Fresh Mixed Biscuits, 2 lbs. per tin . . . . . 25c  
Fresh Fruit Cake, per lb. . . . . 15c

FOR P...  
NO. 481 YC  
Deposits College, 80  
room, 15, 25, 35  
table at rear. One  
and locations in this  
month. 1915  
W. M. WILLI  
38 King St

PROBS—FI  
GER  
British  
ANG  
ILNA FAL  
GERMAN  
RUSSI  
Big Combat F  
tempt to Cu  
M  
AUSTRIAN  
Von Mackenze  
South by  
Ivan  
LONDON, Sept.  
have occupied Vil  
sweeping movemen  
that city have suc  
not entirely surro  
the Russian army,  
in the railway tris  
Lida and Vileika.  
At any rate the  
this district eithe  
may out eastward  
easterly direction,  
soft entirely in the  
which runs from  
ance to Baranov  
The army of Fi  
Hindenburg, which  
reached Vileika, to  
is working in oco  
of Archduke Leopold  
effort to catch a  
army, an operation  
often tried without  
Austro-Germans  
drive in western G  
Russians  
The Russian's are  
the outcome of the  
be decided before  
falls to one side or  
the other, as  
along the Dvina as  
well protected by  
recently occupied  
Vilna-Petrograd R  
impossible that an  
them from that dir  
The battle seem  
out between Vi  
Fin, with the ass  
elements that ca  
the German force  
Vileika.  
Ivanoff holds  
At the southern  
(Continued on P  
CANADIAN  
ARRIVED  
Last Units C  
Friday, Se  
Hu  
TO TRAN  
Strong Moven  
Regiments  
Canada  
By a Staff Report  
OTTAWA, Sept  
here that there is  
Princess Patricia  
brigaded with th  
troops instead of  
British regiments  
Many of the C  
ment are said to  
and the feeling a  
since the McGill  
over as reinforce  
Major Barre an  
Canadian officers  
on the Hesperian  
ed are on the ste  
is coming up the  
light. The offic  
agars Camp near  
General Sir Sam  
on Wednesday.  
Sam Hugh  
that the second C  
how all over in  
brigades made the  
Shorncliffe betwe  
day let.