



THE "SKREI" Cod Liver Oil.

Pure, Pale and almost tasteless. No other Oil to compare with it.

KENNETH CAMPBELL & CO.

STEPHENS & LIGHTHALL,

Advocates, Attorneys and Commissioners, 341 1/2 NOTRE DAME STREET, (Opposite Exchange Bank). C. H. STEPHENS, B.C.L. W. DOW LIGHTHALL, R.A., B.C.L.

40 CARDS all Chromo, Glass and Motto, in Case name in gold & jet 10c. West & Co., Westville, Ct.

CASTOR FLUID (Registered.)

A delightfully refreshing preparation for the hair. Should be used daily. Keeps the scalp healthy, prevents dandruff, promotes the growth. A perfect hair dressing for the family. 25c. per bottle.

HENRY R. GRAY, Chemist,

Sole Manufacturer, 144 St. Lawrence Main Street.

THE COOK'S FRIEND BAKING POWDER

Has become a HOUSEHOLD WORD in the land, and is a HOUSEHOLD NECESSITY

In every family where Economy and Health are studied. It is used for raising all kinds of Bread, Rolls, Pancakes, Griddle Cakes, &c., &c., and a small quantity used in Pie Crust, Puddings, or other Pastry, will save half the usual shortening, and make the food more digestible.

THE COOK'S FRIEND

SAVES TIME, IT SAVES TEMPER, IT SAVES MONEY. For sale by storekeepers throughout the Dominion on wholesale by the manufacturer.

W. D. McLAREN, UNION MILLS, 15 College Street.

THE BURLAND LITHOGRAPHIC COMPANY (LIMITED)

CAPITAL \$200,000,

GENERAL

Engravers, Lithographers, Printers

AND PUBLISHERS,

3, 5, 7, 9 & 11 CLEURY STREET, MONTREAL.

THIS ESTABLISHMENT has a capital equal to all the other Lithographic firms in the country, and is the largest and most complete Establishment of the kind in the Dominion of Canada, possessing all the latest improvements in machinery and appliances, comprising:—

- 12 POWER PRESSES
2 PATENT ENVELOPE MACHINES, which make, print and emboss envelopes by one operation.
1 PATENT LABEL GLOSSING MACHINE,
1 STEAM POWER ELECTRIC MACHINE,
4 PHOTOGRAPHING MACHINES,
2 PHOTO-ENGRAVING MACHINES,

Also CUTTING, PERFORATING, NUMBERING, EMBOSSEING, COPPER PLATE PRINTING and all other Machinery required in a first class business. All kinds of ENGRAVING, LITHOGRAPHING, ELECTROTYPING AND TYPE PRINTING executed IN THE BEST STYLE

AND AT MODERATE PRICES.

PHOTO-ENGRAVING and LITHOGRAPHING from pen and ink drawings a SPECIALTY.

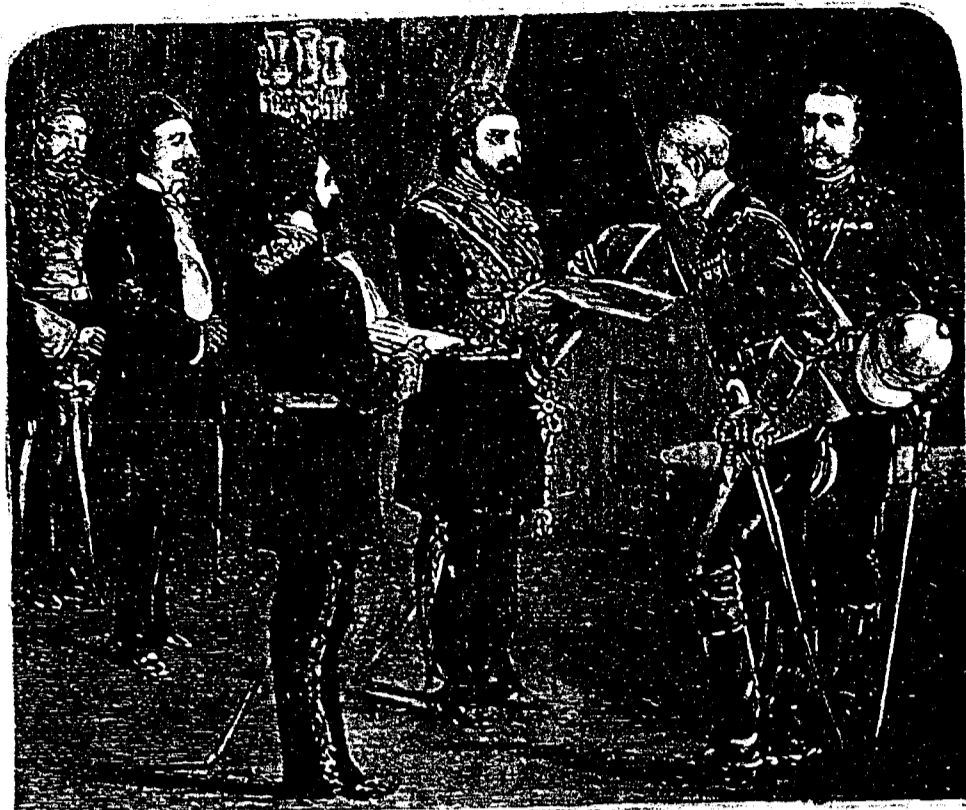
The Company are also Proprietors and Publishers of the

CANADIAN ILLUSTRATED NEWS, L'OPINION PUBLIQUE, and SCIENTIFIC CANADIAN.

A large staff of Artists, Engravers, and Skilled Workmen in every Department.

Orders by mail attended to with Punctuality; and prices the same as if given personally.

G. B. BURLAND, MANAGER.



THE KHEDIVE DECORATING SIR GARNET WOLSELEY.—(SEE PAGE 307.)

LIEBIG COMPANY'S



EXTRACT OF MEAT

FINEST AND CHEAPEST MEAT-FLAVOURING STOCK FOR SOUPS, MADE DISHES & SAUCES.

An invaluable and palatable tonic in all cases of weak digestion and debility. CAUTION.—Genuine ONLY with fac-simile of Baron Liebig's Signature in Blue Ink across Label. This Caution is necessary, owing to various cheap and inferior substitutes being in the Market.

LEA & PERRINS' SAUCE



In consequence of Imitations of THE WORCESTERSHIRE SAUCE which are calculated to deceive the Public, Lea and Perrins have to request that Purchasers see that the Label on every bottle bears their Signature thus—

Lea & Perrins

without which no bottle of the original WORCESTERSHIRE SAUCE is genuine.

Ask for LEA and PERRINS' Sauce, and see Name on Wrapper, Label, Bottle and Stopper. Wholesale and for Export by the Proprietors, Worcester; Cross and Blackwell, London, &c., &c.; and by Grocers and Oilmen throughout the World.

MEASRS J. M. DOUGLASS & CO. MONTREAL. MESSRS URQUHART & CO. MONTREAL.

40 CARDS all Chromo, Glass and Motto, in Case, name in gold & jet, 10c. West & Co., Westville, Ct.

The Scientific Canadian

MECHANICS' MAGAZINE

AND

PATENT OFFICE RECORD

A MONTHLY JOURNAL

Devoted to the advancement and diffusion of Practical Science, and the Education of Mechanics.

THE ONLY SCIENTIFIC AND MECHANICAL PAPER PUBLISHED IN THE DOMINION.

PUBLISHED BY

THE BURLAND LITHOGRAPHIC CO.

OFFICES OF PUBLICATION,

5 and 7 Bleury Street, Montreal.

G. B. BURLAND General Manager.

TERMS:

One copy, one year, including postage... \$2.00 One copy, six months, including postage... 1.10 Subscriptions to be paid in ADVANCE.

THIS PAPER MAY BE FOUND ON FILE AT GEO. F. HOWELL & CO'S Newspaper Advertising Bureau (10 SPRUCE STREET), WHERE ADVERTISING CONTRACTS may be made for it in NEW YORK.

PATENTS.

We continue to act as solicitors for patents, caveats, trade-marks, copyrights, etc., for the United States, and to obtain patents in Canada, England, France, Germany, and all other countries. Thirty-six years' practice.

No charge for examination of models or drawings. Advice by mail free.

Patents obtained through us are noticed in the SCIENTIFIC AMERICAN, which has the largest circulation, and is the most influential paper of its kind published in the world. The advantages of such a notice every patentee understands.

This large and splendidly illustrated newspaper is published WEEKLY at \$3.00 a year and is admitted to be the best paper devoted to science, mechanics, inventions, engineering works, and other departments of industrial progress, published in any country. Single copies by mail, 10 cents. Sold by all new-dealers.

Address, Munn & Co., publishers of Scientific American, 261 Broadway, New York. Handbook about patents mailed free.

CARDS, 10 Lily and imported Glass, 10 Transparent, 20 Motto, Serail and engraved, in colors in case, and 1 Love Letter, name on all 15c. West & Co., Westville, Ct.

FURNITURE.

FINE AND MEDIUM.

AN IMMENSE STOCK.

HENRY J. SHAW & CO.,

726 Craig St. (Near Victoria Sq.)

Montreal Post-Office Time-Table.

NOVEMBER, 1882.

Table with columns for DELIVERY, MAILS, and CLOSING. Rows list various routes including O.N.T. & WESTERN PROVINCES, QUE. & EASTERN PROVINCES, and LOCAL MAILS.

Table for LOCAL MAILS listing routes like Valleyfield, Valois & Dorval, Beauharnois Route, etc.

Table for UNITED STATES listing routes to St. Albans and Boston, Boston and New England, etc.

Table for GREAT BRITAIN, &c. listing shipping schedules for Canadian Line, Cunard Line, etc.

REGISTERED LETTER MAIL for the New England States—for Boston, New York and Southern States—closed only at 2 p.m.

(A) Postal Car Bags open till 8.45 a.m. and 9.15 p.m. (B) Do. 9.00 p.m.

Mails for St. Thomas, W.I., Argentine Republic and Montevideo will be despatched from Halifax, N.S., on the 20th of each month.

Mails leave New York for the following Countries, as follows:

- For Porto Rico direct, September 1st and 15th.
" Venezuela and Curacao, September, 2nd and 23rd.
" For Cuba and W. I. via Havana, September 2nd, 16th and 30th.
" For Brazil and W. I. via Havana, September 6th.
" The Windward Islands, September 6th and 27th.
" Jamaica, Turk's Island and Hayti, 8th and 25th.
" For Cuba and Porto Rico via Havana, September 9th, 21st and 23rd.
" Santiago and Cienfuegos, Cuba, September 12th.
" For Cuba and for Mexico via Havana, September 14th and 28th.
" Hayti and U.S. Columbia (except Asp. and Pan-15th and 29th.)
" South Pacific and Central American Ports, September 9th, 20th and 30th.
" Cape Hayti, Saint Domingo and Turk's Island, September 24th.
" The Bahama Islands, September 28th.

Mails leave San Francisco: For Australia and Sandwich Islands, Sept. 23rd. For China and Japan, September 7th, 13th and 28th.