

MONTREAL

Hotel Cadillac, rates, \$1.50 to \$2.50 per day. J. W. Lewis, proprietor. Notre Dame St.
 Queen's Hotel, Rates \$2.00 to \$3.00. E. M. Matthews, Manager.
 Turkish Bath Hotel, St. Monique St., temperance house. Rates, \$1.50 to \$2.00 per day. F. E. McKays, manager.
 Avenue House, terms, \$1.50 to \$2.00 per day, E. S. Reynolds, prop. McGill College Av.
 Stanley Hotel, Cor. Windsor and Osborne Streets.

St. Lawrence Hall, St. James street.
 Windsor Hotel, Dominion Square.

Richelieu Hotel, 47 St. Vincent street. J. B. Durocher & Co., Props. Rates \$2.50 to \$3.50 per day. Special rates for commercial travellers, \$2.00 per day.

Riendeau Hotel, rates, \$2.00 to \$3.00. Jos. Riendeau. Jacques Cartier Square.
 Balmoral Hotel, 1894 Notre Dame street.

QUEBEC

Chateau Frontenac.
 Florence Hotel, Benj. Trudel, Prop. and Manager, Rates \$2.00 to \$3.00 per day.

Hotel Victoria

Mountain Hill House, 94 & 96 Mountain Hill, E. Dion & Co., Proprietors, Joseph Cloutier, Manager. Rates, \$1.25 to \$1.50 per day.

St. Louis Hotel, Joseph St. Onge, Manager. Special rates to commercial travellers. Rates, \$2.00 to \$3.00 per day.

SOMERSET

Commercial Hotel.

ST. HYACINTHE

Yamaska Hotel.

SHERBROOKE

Sherbrooke House, W. A. Richardson & Co., Proprietors.

Magog House, Henry H. Ingram, Prop.

ST. HERMAS

Desjardin's Hotel.

THREE RIVERS

Dufresne's Hotel.

WATERVILLE

Jubilee House.

WATERLOO

Brooks' Hotel.

N. S. & N. B.

AMHERST, N. S.

Terrace Hotel, Wm. G. Calhoun, Prop. \$1.50 to \$2 per day. Hot and cold water baths. Electric light, electric bells, etc. Commodious sample rooms in centre of town.

ANNAPOLIS, N. S.

Queen Hotel, C. A. Perkins, Prop. Rates, \$1.50 per day. First-class in all its appointments. Unobstructed view of Harbor. Carriages to all steamers & trains free.

HALIFAX

Royal Hotel, 119 & 121 Argyle St., Mrs. L. D. Winsor, Proprietress. Rates, \$1.25 to \$1.50. Meals served to suit arrival and departure of guests.

Albion Hotel, Grant Bros., Props. Terms, \$1.50 per day. The most central hotel in the city. Near Custom House, Post Office and principal banks.

Halifax Hotel, Halifax, N.S., H. Hesselin & Sons, Proprietors. Rates, from \$2.50 to \$3.00 per Day.

Queen's Hotel.

KENTVILLE, N. S.

Porter House, W. H. Townshend, Prop. This commodious & comfortable hotel is located in business centre of the town. Good sample rooms. Rates moderate.

"Lyons Hotel." Centrally located. Opp. R. R. Station & Post Office. Newly furnished throughout. Lighted by electricity. Commodious sample room. Rates moderate. J. R. Chipman, Prop.

LUNENBURG, N. S.

Russell House, J. B. Russell, Prop., Rates, \$1.50. Good sample rooms. All modern conveniences. Free carriage to and from trains & steamers. First-class stable in connection.

King's Hotel, J. W. King, Prop. Rates, \$1.50 to \$2. Centrally located. Lighted by electricity. Rooms heated by hot water. Row boats & sail boats placed at disposal of visitors. Hot & cold baths.

NEW GLASGOW

Hotel Vendome, D. McDermid, Proprietor. Rates, \$1.50 per day.

TRURO, N.S.

Victoria Hotel, (Opposite I. C. R. Station). G. R. Duce, Proprietor. Terms, \$1.50 per Day.

Hotel American (Opp. I.C.R. Station, Casson & Chisholm, Props. Terms, \$1.50 per day. Remodelled & refurnished. Sample rooms, Telephone, Hot & cold baths.

Stanley House, Inglis St., A. Stanley Murphy, Prop. Terms, \$1.50 per day. Sample Rooms, Electric Light, Telephone, Hot & Cold Baths. Newly furnished.

WEYMOUTH BRIDGE, N.S.

Weymouth House, R. L. Black, Prop. A first-class and well appointed hotel, newly improved & refurnished. Sample rooms.

WINDSOR, N. S.

Hotel Dufferin, Schultz & Jordan, Props. Rates, \$1.50 per day. Convenient to Railroad and Steamboats. Free Sample Rooms.

WOLFVILLE, N. S.

American House, R. O. Chisholm, manager. Transient & permanent boarders accommodated at most reasonable rates. Carriages to and from depot & hotel free.

YARMOUTH, N. S.

Hotel Lorne, J. H. Hurlbert, prop. Rates, \$1.50 per day. Most central hotel in Yarmouth. 60 rooms. 9 sample rooms.

Queen Hotel, E. M. Nichols, Prop., \$1.50 to \$2.00 per day. Sample rooms, bath rooms, Special inducements to com. travellers.

FREDERICTON, N.B.

Queen Hotel, Queen Street, Frederic on, N. B. J. A. Edwards, Proprietor. First-Class Livery in Connection.

MONCTON, N. B.

Queen Hotel, A. Hebert & Co., Props., 294 Main St. Rates \$1.25 to \$1.50. Most centrally situated hotel in the city. Free Coach to and from all Trains

ST JOHN

Hotel Stanley, J. M. Fowler, Prop. Com. Rate \$1.50 per Day.

Royal Hotel, Raymond & Doherty, Props.

Victoria Hotel, D. W. McCormick, Prop.

Belmont Hotel, Opposite Union Depot. J. Sime, Prop. Terms, \$1 to \$2. Baggage to and from station free.

ST. STEPHEN, N.B.

The Queen Hotel, F. S. Richardson, Prop. Rates, \$1.50 per day. Centrally located. Opposite the P.O. Near R. R. Depot.

SUSSEX, N. B.

Queen Hotel, P. Doherty, Prop. Opposite R.R. Depot. Rates reasonable. Good livery in connection. Good sample rooms.

Depot House

SACKVILLE

Brunswick House.

WOODSTOCK

Wilbur House.

SYDNEY, C. B.

Bellevue House, J. A. McDermid, Prop. Rates, \$1.25 per day. Meals at any time from 6 a.m. to 11 p.m.

CHARLOTTETOWN, P.E.I.

Queen Hotel, P. P. Archibald, Proprietor. This House is First-Class, Central, Convenient to Railway, Steamers, Banks and Post Office. Carriages always in waiting.

UNITED STATES.

NEW YORK

Hotel America, Irving Place Cor. 15th St.

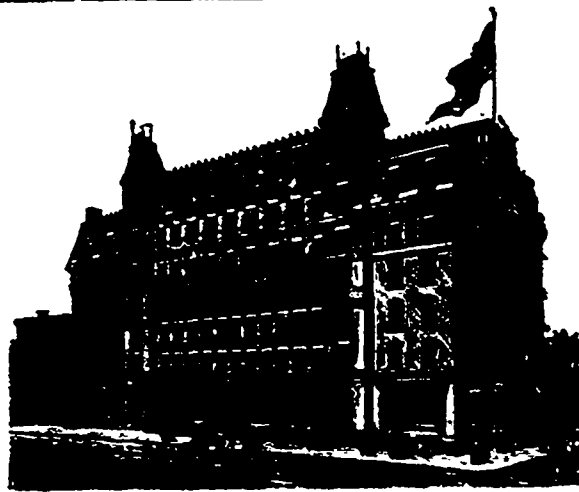
Aberdeen Hotel, 21 St. and Broadway.

HOLYOKE MASS

Hotel Hamilton.

MERRIDEN CONN

Winthrop Hotel.



BELVEDERE HOUSE.

Corner 18th Street and 4th Avenue
NEW YORK.

JOS. WEIRLE & SON, Proprietors.

EUROPEAN PLAN, \$1.00 AND UPWARDS

AMERICAN " \$3.00 " "

Fire Proof.