

TO MANUFACTURERS.

The Town of Chicoutimi is prepared to offer exemption from taxes, and a reasonable bonus to the first new industry established in the town, which will employ not less than 200 operatives.

Chicoutimi is the eastern terminus of the Lake St. John Railway, the County Town of the district, lighted by electricity, having a good aqueduct and a population of 3300. There is a magnificent water power in the town, abundance of cheap labor, and good shipping facilities by rail and by ocean navigation.

For information apply to

J. D. GUAY
Mayor.

All communications, advertisements, etc., intended for insertion in "The Trade Review" should reach this office by Wednesday morning.

General Summary.

There were more quotations from the **TRADE REVIEW** last year in Canadian, American and English papers than from all the other journals of its class combined, that are issued in the Dominion.

A dividend of 20 cents on the dollar has been declared by the referee of the Ontario Forge and Bolt Company. The stock, plant, etc., was disposed of for \$110,000.

The Bank of St. Johns has established a branch at St. Remi, under the management of Mr. C. A. Bedard, ex-manager of La Banque du Peuple in the same locality.

It is stated that glanders are rife in the Liverpool quarantine for imported horses, and that out of one hundred Canadian horses in one depot forty are suffering from the disease.

A shipment of 850,000 shingles was made last week to Barbados, by C. Powell, St. John. A Cushing & Co. shipped to Hamilton, Bermuda, 41,000 onion shocks and 500 lily boxes.

At Wyemouth, N. S., Burrill & Co. will ship about 5,000,000 feet of lumber this season, while Campbell & Co. will cut 3,000,000 feet in their own mills, and buy 1,000,000 from other parties.

For the half-year ending April 1 the Grand Trunk railway report has been issued in London. The gross receipts for the period named have increased £20,681, and the working expenses have increased £40,689. There is an aggregate debit balance of £224,767.

Seven new canneries will operate in the rivers of British Columbia this year. Among them is a Chinese cannery and co-operative fisherman's cannery on the Fraser. This is the fourth year for salmon and the run is expected to be poor. The last of the fry from New Westminster fish hatchery have been liberated, including 6,400,000 sockeyes and 4,000,000 whitefish.

Last month, the Supreme Lodge of Sons of England met in Peterborough. The Supreme officers reported a present membership of over 12,000. Amount paid for sick benefits and medical attendance \$36,200, cash on hand \$60,000 and in funeral benefit department \$2,500 was received and \$11,190 paid out, cash on hand \$13,000. The beneficiary department has 2,400 members carrying insurance amounting to \$2,703,000. \$22,000 of claims were paid during the year.

ALBERT W. FALL.

FRANK S. PARKER.

FALL & PARKER,

The Most
Celebrated

Designers and Manufacturers

— OF —

ARTISTIC BENT GLASS AND WIRE,
CHANDELIER AND DECORATIVE
NOVELTIES of Every Description,

Hall and Ceiling Lights, Pendants, Globes, Chandelier Novelties, Wire and Glass Screens, Frieze and Panels, Artistic Transoms, Etc.,

TRANSOMS, WALL POCKETS, Etc.

88 and 90 Walker Street, NEW YORK CITY.

Registered No. 20-4741.

•• THE ••



RICHELIEU

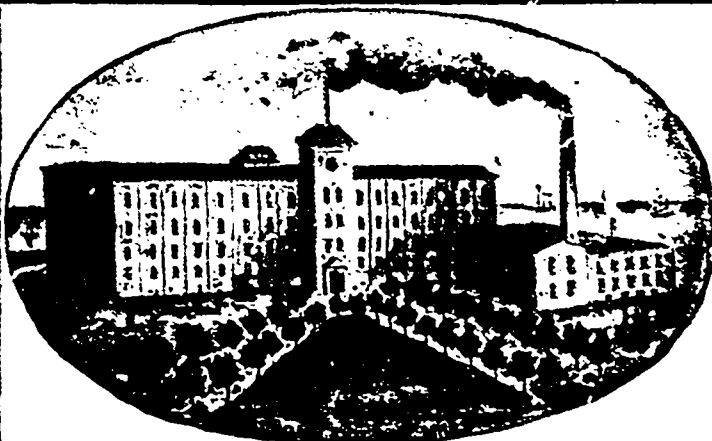
MANUFACTURED BY THE

Dominion Sanitary Pottery Co.,

See that the closets you buy are stamped with the name "Richelieu" and the name and trade mark of the company. If your plumber has not got them, write to the agent of the pottery.

E. PLANT,
68 Temple Building,
MONTREAL.

Telephone 2420.



WM. PARKS & SON, Ltd.,

Cotton Spinners, Bleachers Dyers and Manufacturers,

ST. JOHN, N.B.

Yarns of a Superior Quality and Fast Colors for Manufacturing Purposes a Specialty.

DAVID KAY, Fraser Building, Montreal.

J. SPROUL SMITH, 24 Wellington St., Toronto.

JOHN HALLAM, Agent for Beam Warps, 83 Front St. East, Toronto.

