



MINING LAWS OF ONTARIO.

ANY person may explore Crown Lands for minerals. Mining lands may be taken up as surveyed locations or staked claims.

Locations range from 40 to 320 acres.

Claims range from 10 to 20 acres on vein or lode.

Locations may be acquired in fee or under leasehold.

Price of locations north of French River, \$2 to \$3 per acre, and south of it, \$2 to \$1.50, according to distance from railway.

Rent of locations first year 60c. to \$1 per acre, and subsequent years 15c. to 25c. per acre.

Rent of claims, \$1 per acre each year.

Claims must be worked continuously.

Royalty on ores specified in the Act, 2 per cent. of value at pit's mouth less cost of labor and explosives.

Royalty not charged until seven years from date of patent or lease, nor (as provided in s. 4 (3) of the Mines' Act, 1892), until fifteen years in the case of an original discovery of ore or mineral.

Original discoverer of ore or mineral on claim entitled to stake out a second claim.

Crown Lands sold under provisions of mining laws in force prior to 4th May, 1891, exempt from royalty.

Copies of the Mines Act, 1892, Amendment Act, 1894, may be had on application to

ARCHIBALD BLUE,

Director Bureau of Mines

TORONTO, May 25th, 1894.



CONDITIONS

OF

Obtaining Government Drill to Explore Mines or Mineral Lands.

Owners or lessees of mines or mineral lands in Ontario may procure the use of a Government Diamond Drill, subject to the provisions of the Rules and Regulations relating thereto, upon giving a bond for payment to the Treasurer of the Province, of costs and charges for (1) freight to location, (2) working expenses of drill, including labor, fuel and water, (3) loss or breakage of bits, core lifters and core shells, (4) wear or loss of diamonds, (5) other repairs of breakages and wear and tear of machinery at a rate per month to be estimated, and (6) an additional charge of \$50 per month after the mine or land has been shown, through use of the drill, to be a valuable mineral property.

Of the aggregate of costs and charges above enumerated, excepting the sixth item, forty per cent. will be borne by the Bureau of Mines in 1894, thirty-five per cent. in 1895, thirty per cent. in 1896, and twenty-five per cent. in each year thereafter until the end of 1900. All accounts payable monthly.

For Rules and Regulations *in extenso* governing the use by companies and mine owners of Diamond Drills, or other information referring to their employment, application may be made to ARCHIBALD BLUE, Director of the Bureau of Mines, Toronto.

A. S. HARDY,

Commissioner of Crown Lands.

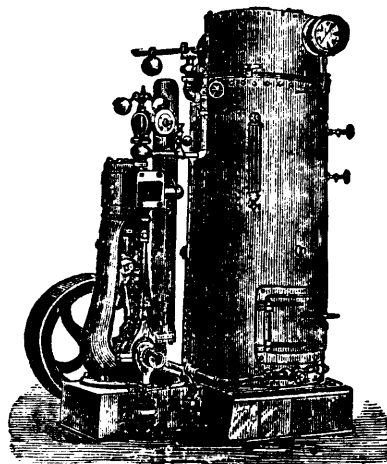
Toronto, October 17, 1894.

BERTRAM ENGINE WORKS CO.

Successors to Doty Engine Works Co., and
John Doty Engine Co., Ltd.

— MANUFACTURERS OF —

MINING MACHINERY



Marine and Stationary Engines and Boilers.

Hoisting and Vertical Engines.

Ore Crushers.

Stamp Mills and

General Machinery.

We Guarantee First-Class Work and

Prompt Shipment.

Prices and Estimates on Application

BERTRAM ENGINE WORKS CO.,

Bathurst and Niagara Sts.,

TORONTO, CANADA.

BUTTERFIELD'S HINGED PIPE VISE

MADE IN TWO SIZES.

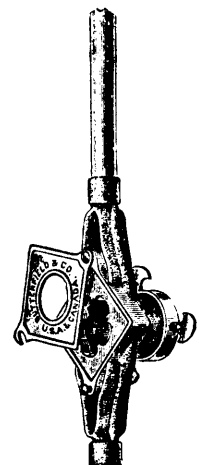
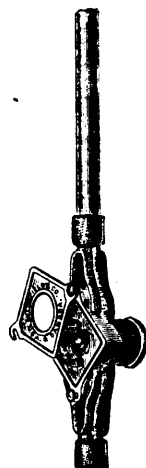
No. 1 Holds from 0 to 2½ inch pipe.

No. 2 Holds from ½ to 4½ inch pipe.

**SIMPLEST AND BEST
IN THE MARKET : :**

Butterfield & Co. are makers of all Tools for working Water, Gas and Steam Pipe, Stocks and Dies and all kinds of Taps.

— MANUFACTURED BY —



BUTTERFIELD & CO., ROCK ISLAND, P.Q.

CANADIAN GEMS, PRECIOUS STONES,

— AND COLLECTIONS OF ORES and MINERALS

COMPLETE CABINETS FROM \$1.00 UP TO \$10.00

Canadian Mining Review

Write for our Catalogue.

OTTAWA, ONTARIO.