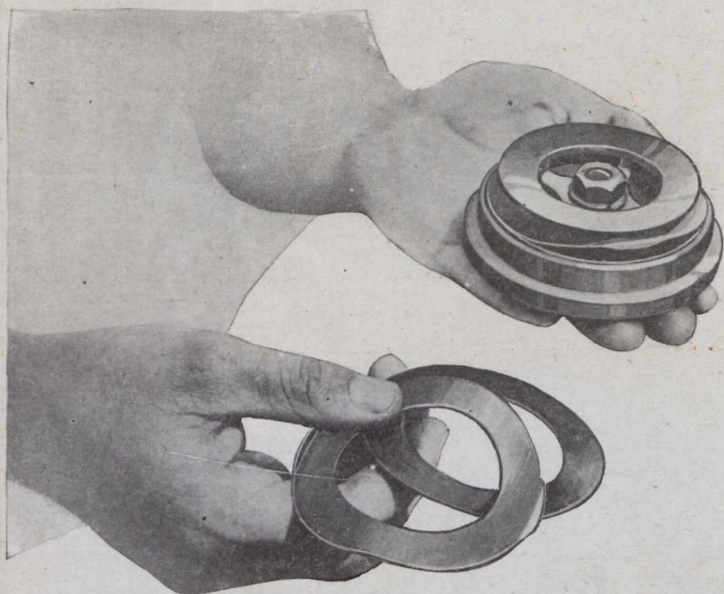
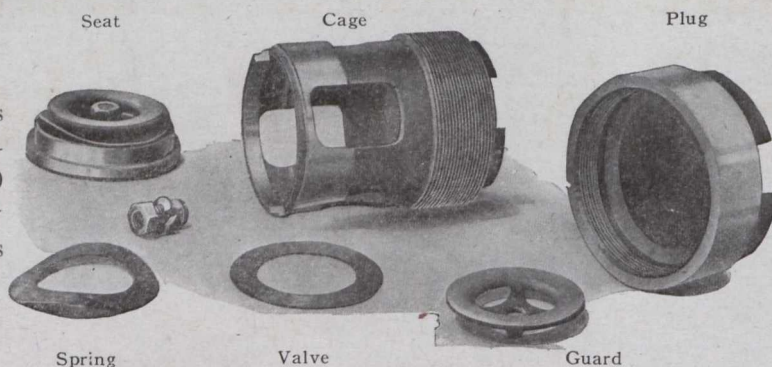


# Sullivan Wafer Valves for WG-6 Compressors



Light thin steel discs, held to their seats by flat springs of the same material, form the valves of Sullivan WG-6 single stage belted Compressors.

WG-6 Compressors are available in capacities of 50 to 470 cubic feet. Low pressure machines are also built.

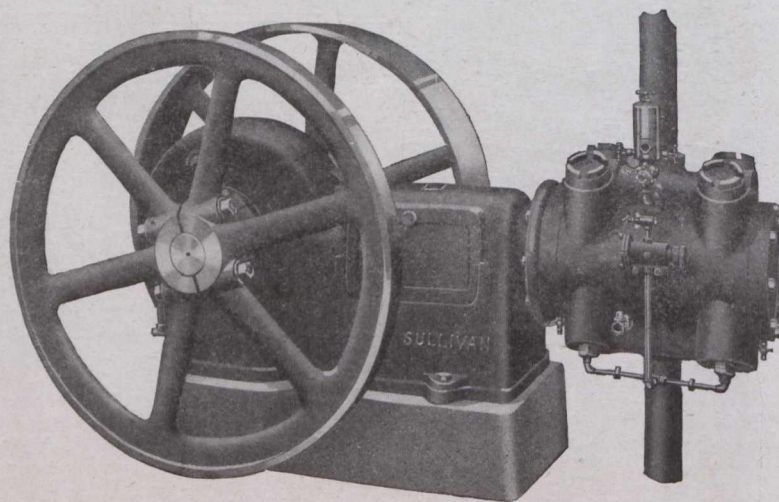


WG-6 Compressors are splash oiled and totally enclosed. An inlet-valve unloader saves power when air is not needed.

Wide, short, port openings, lightness, low-lift, simplicity and long life are "Wafer" valve features, which help to make the service rendered by these small Sullivan Compressors more efficient, more dependable, and more economical than ever.

## Bulletin 175-GC.

(Wafer Valves are operating successfully in Sullivan Torpedo Charging Compressors, under 2,500 pounds pressure.)



# SULLIVAN MACHINERY CO.

122 So. Michigan Ave., Chicago

Boston

Butte, Mont.  
Nelson, B.C.

Denver, Colo.  
New York  
Sydney, Aus.

Paris  
Toronto

Duluth  
Pittsburgh  
Vancouver

Juneau  
Spokane

London