

Farmer's Advocate and Home Journal

WESTERN CANADA'S AGRICULTURAL WEEKLY

REGISTERED IN ACCORDANCE WITH THE COPYRIGHT ACT OF 1875

Vol. XLVI

WINNIPEG, CANADA, FEBRUARY 16, 1910

No. 908

Send Now For

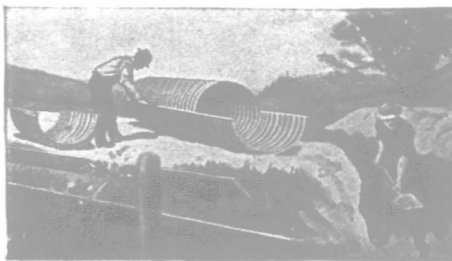
Sample And
Booklet

PEDLAR

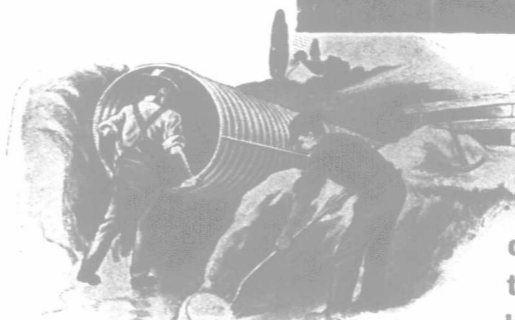
**PERFECT
CORRUGATED
GALVANIZED
CULVERT**

For any work any culvert can be put to, nothing else yet made quite equals this new Pedlar product — Pedlar's Perfect

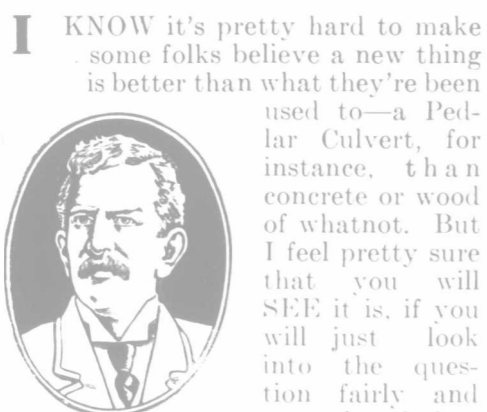
Corrugated Galvanized Culverts. Only the Pedlar People in all Canada make a culvert of Best Billet Iron, in semi-cylindrical sections, corrugated under enormous pressure (over 60 tons to the square inch!) and Galvanized After being shaped.



**THIS IS THE
PRACTICAL
CULVERT**



Most compact and portable culvert made, and the easiest to put in place.



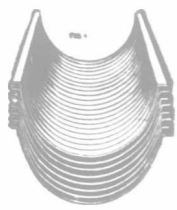
I KNOW it's pretty hard to make some folks believe a new thing is better than what they're been used to—a Pedlar Culvert, for instance, than concrete or wood of whatnot. But I feel pretty sure that you will SEE it is, if you will just look into the question fairly and squarely before you undertake any more culvert construction, or road improvement, or ditching. Don't judge this NEW culvert by anything you've heard about other culverts. MINE IS DIFFERENT—a whole lot different, and a whole lot ahead of any other. Write to my people and make them show you why and how.

G. A. Pedlar

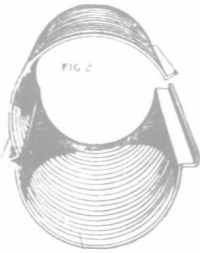
Not only is the iron that makes Pedlar Culverts best quality money can buy but it is unusually heavy—from 14 to 20 gauge, instead of lighter gauges common to inferior goods. This extra strength enables a Pedlar Culvert to stand heavy traffic upon roads, even though protected by only a very thin cushion of soil. Mark, also, that this is the ONLY culvert made that is galvanized AFTER being curved and corrugated—thus insuring it positively against rust and decay.

Extra Heavy, Strong, Rust Proof

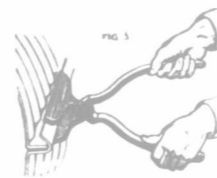
The peculiar Pedlar flange, or lock-rib, along the whole length of each side of these culverts, clamps together easily and most rigidly. There are no bolts, no rivets, no lock-nuts of any kind—simply clamp the edges of the flanges together, making a triple thickness of inter-sealed heavy metal along the sides of the pipe (read below here how this is quickly done) and you have a culvert that is enormously strong, tight, and not only leak-proof, but strain and rust and frost-proof, the rib allowing for expansion and contraction. You cannot appreciate the value and the simplicity of this until you have seen the culvert itself. It is the easiest culvert to put together, and it is better when put together. It costs less per linear foot to ship by freight, and a whole lot less to haul—it nests, that's why, of course. And it will serve any culvert use better.



When the sections of Pedlar Culvert, of any diameter—it's made from 8 inches to 6 feet—reach you, they are nested like Fig. 1. Note the two distinct flanges—the radial and the recurved. These fit into each other, and are FLAT, while the CURVE of the culvert is corrugated. Place section on top of section, and the flanges, or locking-rib,



engage easily, as you see in Fig. 2. The joints between one length and another are "broken"—no over-lap reaches more than half-way round the culvert's diameter; and this is possible with NO OTHER metal culvert made. It is a most valuable feature, for it reduces the chance of leakage to the very least minimum.



WRITE TO-DAY FOR POSTPAID FREE SAMPLE AND BOOKLET 61. ADDRESS NEAREST PLACE.

The **PEDLAR PEOPLE** of Oshawa

Established 1861

- HALIFAX 16 Prince St.
- MONTEREAL 211 St. Jacques St.
- OTTAWA 45 St. Paul St.
- TORONTO 111-113 Bay St.
- LONDON 26 King St.
- CHICAGO 200 E. Wacker Dr.
- VANCOUVER 111-113 Bay St.
- VICTORIA 111-113 Bay St.