

Will Make  
ce Right  
l Terms  
y easy—

an't farm right  
a scale; and  
n't find a scale  
equal to those

ON CAMPBELL  
President

h a Govern-  
its accuracy.  
ent Government  
actory.

of Order  
il parts to get  
nd beam, finely  
shows full tare  
easily read, no  
se on top beam  
s; notches lock  
h at each 200  
hown by small  
Weights with  
l accuracy up  
TONS—ten  
othing about it  
well, tested so

Can't Wear Out  
cause It's Steel

### Scale

Such a Scale  
ll you buy, all  
igh your stock  
keep track of  
a BUSINESS  
akes it easy to  
ave its cost to  
—because you  
or can you be  
our farm.

rm Needs  
Accurately

### CHATHAM Form Scale

ny farm, speci-  
Weights accur-  
s Double Brass  
arge for this-  
shed. Govern-  
t attached to  
paid.

Prices, Etc.,  
ales

Scale in the

vertising cam-  
tory and terms.

ces:  
Winnipeg  
1, Ontario

# FARMER'S ADVOCATE

## AND HOME JOURNAL

The Only Weekly Agricultural Paper in Western Canada

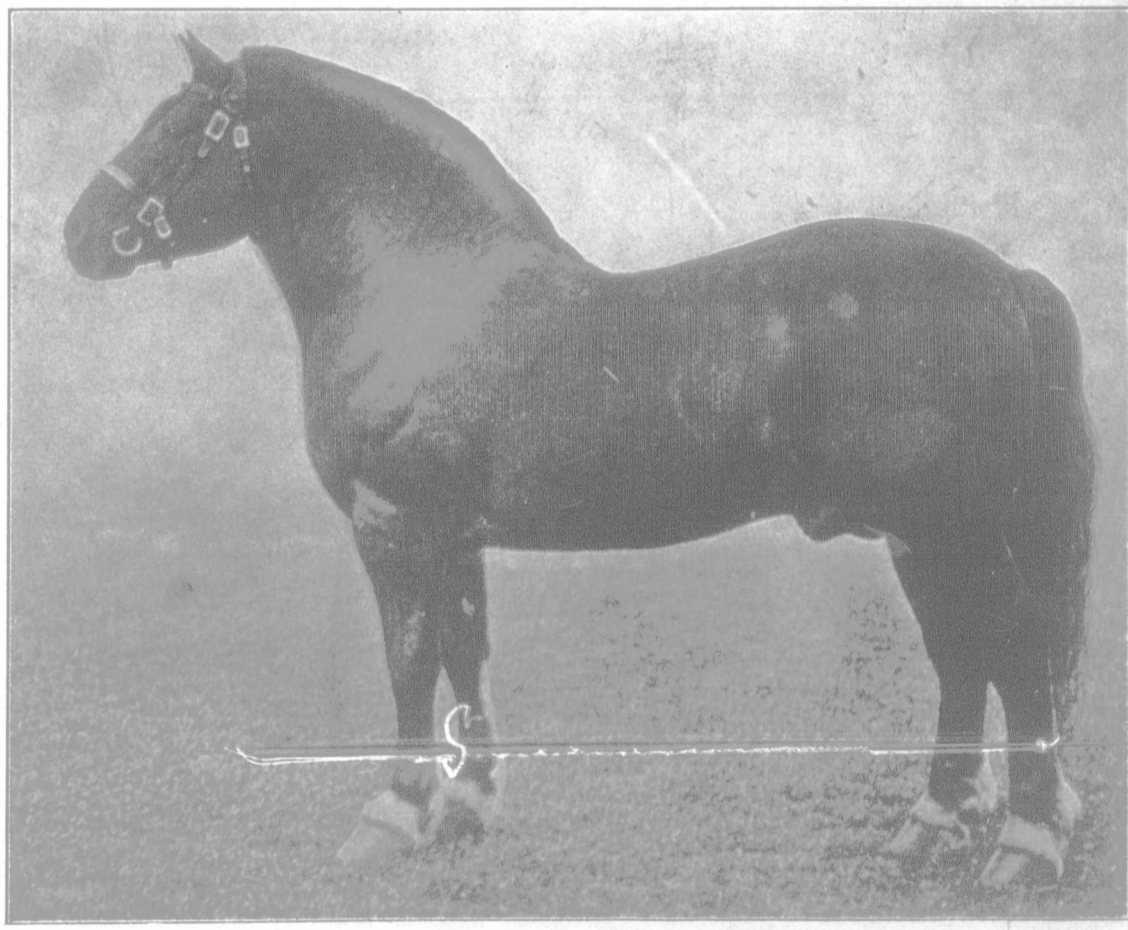
REGISTERED IN ACCORDANCE WITH THE COPYRIGHT ACT OF 1875

Vol. XLV

WINNIPEG, CANADA, NOVEMBER 10, 1909

No. 894

## THE HEAVY HORSE FOR CANADA



Suffolk Stallion

### FACTS ABOUT THE SUFFOLK HORSE

- (1) The oldest pure-bred draught horse in the world.
- (2) Clean legs, strong pasterns, best of feet and bone closely approaching the Thoroughbred.
- (3) Unequaled for endurance, constitution, longevity and will thrive and do well on less keep than any other breed.
- (4) Unequaled as a cross on all types of mares, either heavy or light.

### HIS RECORD

- (1) Winner of 14 (out of 23) championships open to all heavy breeds and more than half the seconds at the annual shows of The Royal Agricultural Society of Great Britain, also minor championships in various parts of the world.
  - (2) Winner of the four-horse team (open to all heavy breeds) at The Great International Horse Show held at the Olympia, 1908.
- The successes of half-bred Suffolks at Islington, Olympia and other leading shows are very numerous.

Messrs. Jaques Bros., The Suffolk Horse Ranch, Lamerton P.O., Alta. (Railway station, Alix, C. P. R. Lacombe Branch), the largest Importers and Breeders of Suffolk Horses in Canada, have now a very large stud for buyers to select from having recently imported another large consignment.

Further particulars and prices on application.