

PLUS + Strength!

It's built into EVERY Cockshutt Implement

—it pays to put it there—pays you and us too!

Plus-strength means strength to stand harder usage than any farm-
implement ought to have to stand—but DOES have to, sometimes.

You know what "careful" use the average "hired man" is apt to give any farm-
implement! And the more expensive the thing is, the harder usage it is likely to get—on your farm or anybody else's. Now an ordinary farm-
implement lacks plus-strength. It's built for careful handling—not for abuse. Wherefore it goes smash under stress—and always at the busiest time—when breakdowns cost most.

Of course it costs more to build plus-strength into a machine; but the buyer of a Cockshutt implement pays no more to get it.

Just as no Cockshutt customer pays a cent of the cost of this advt., he doesn't pay for the surplus strength built into a Cockshutt tool. **Where the value of it comes in** Advertising is an investment that repays us in increased business—and plus-strength is an investment that repays us in increased reputation. You get breakdown insurance for the price you'd pay for ordinary implements. We get your faith and your good word—and they count a whole lot in this business.

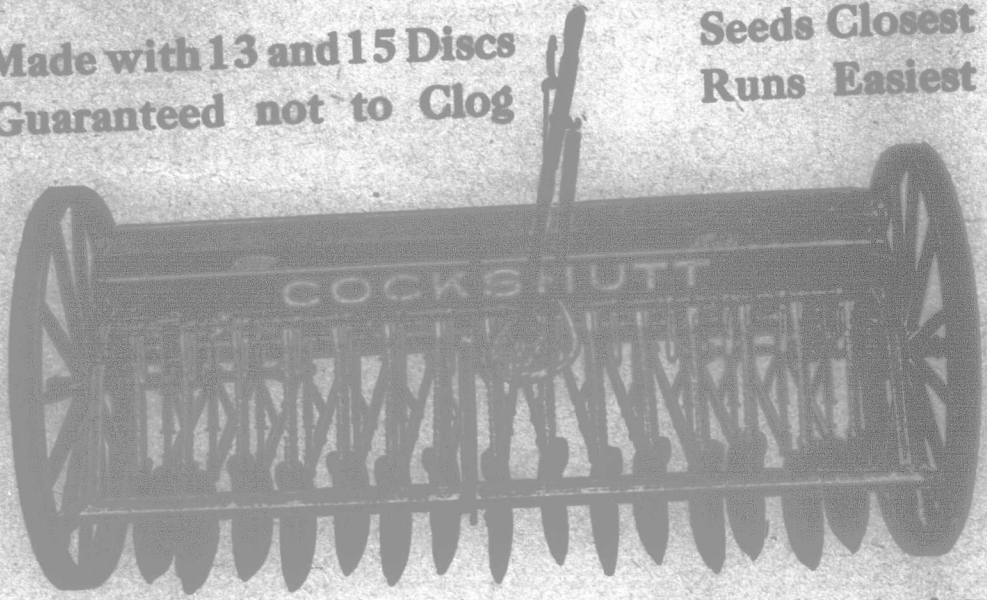
This plus-strength does NOT mean extra weight, nor clumsiness. It wouldn't be worth having if it did mean either of those things.

Putting this surplus strength into a Cockshutt Implement is a matter of careful choice of materials; of special formula for steels and irons; of special factory processes; of special study by experts who are highly paid to accomplish this very thing—and to do it without increasing, but rather by lessening, the friction and the draft of the implement. Cockshutt implements stand up better and still draw lighter.

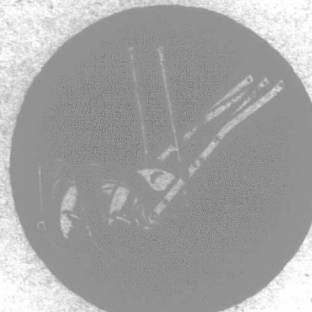
As the Cockshutt Line includes a great many kinds of implements—ranging from light garden plows to huge 12-furrow engine gangs, and including harrows, cultivators, seeders, and other kinds of modern farm-equipment—it is not possible to tell you here just how this plus-strength is shown by each of them. But if you will just write and ask for our catalog, and tell us what particular implement you might be interested in, the details will go to you by return mail. That is well worth your while. It means money saved to you—and satisfaction gained. Write us to-day.

Made with 13 and 15 Discs
Guaranteed not to Clog

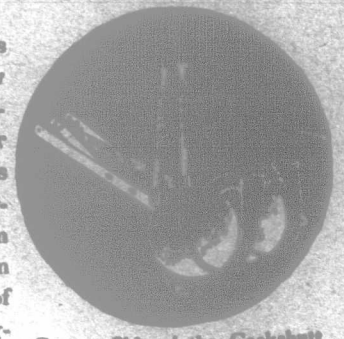
Seeds Closest
Runs Easiest



If you knew, to a dead certainty, that seeding your land to any grain with this New Disc Drill actually would increase the yield from 2 to 5 bushels an acre—if that could be proved to you beforehand—you would think pretty seriously about investing in one, wouldn't you? Well, that CAN be proved to you; and so can it be proved to you that no other seeding machine built will do what this does. Free Booklet B proves it.



Concave Side—Note Tubular Pressure Spring Rod that Prevents All Backing—



Convex Side of the Cockshutt Disc that Can't Clog in Any Soil—

Booklet "B" tells you, among things you ought to know, why this New Cockshutt Disc Drill sows anything grown in drills, whether small as tobacco-seed or big as broad-beans, with greater accuracy and far more uniformity than any other method of seeding can do. The pictures at each side of what you are reading now suggest one reason why this is so.

The picture above shows that the grain-boot on this Drill does not touch the disc at any point; and, also, that the space between boot and disc widens gradually from bottom to top. This makes it impossible for trash, weeds, stones, etc., to jam there. Nothing of that kind can block the free turning of any disc. There's nothing to hold mud or trash. That's why this drill will work perfectly under conditions that would stall any other drill ever built.

Discs are set six inches apart with a seven-inch stagger, and at exactly the angle that will cut the ground easiest. Grain follows right down the grain-boot into the BOTTOM of the furrow—always at the depth you adjust for—no chance for missing. And you can seed from one-half of the hopper

only, if you wish to—often a big advantage. The grain-feed is a FORCE-feed, governed by a lever, handily reached from the full-width running board.

This shows the one perfect disc-bearing—GUARANTEED dust-proof and self-oiling. It accounts for this Disc Drill's wondrously light draft.

This Drill's drop-pattern frame, of high carbon angle steel (extra tough, extra strong), has a heavy I-beam running across the machine's whole width. The whole frame is RIVETED together—not bolted—nothing about it to shake loose or get out of true. And this is simply one of many Plus-Strength and Minus-Draft features of the Cockshutt New Disc Drill. SEND FOR THE BOOKLET that tells about them all—send to-day. It's FREE. Address

COCKSHUTT PLOW CO. BRANTFORD

LIMITED