

The Metropolitan Life INSURANCE COMPANY.

Incorporated by the State of New York

Assets\$176,429,015.00

This Company has more premium-paying business in force in the United States and Canada than any other Company, and for each of the last 12 years has had more new insurance accepted and issued in America than any other Company.

In 1906 it issued in Canada alone,

\$15,334,576 on 86,764 policies.

Any of its six hundred Canadian agents scattered through every town and city of the Dominion will be pleased to give you every information.

It has deposited with the Dominion Government, for the protection of policy-holders in Canada, in Canadian Securities, over \$3,400,000.00.

THE COMPANY OF THE PEOPLE. BY THE PEOPLE, FOR THE PEOPLE.

The LIVERPOOL and LONDON and GLOBE

Insurance Company

Cash Assets exceed.... ..\$ 54,000,000
Canadian Investment exceed . . . 3,750,000
Claims paid exceed.... .. 240,000,000

CANADIAN BRANCH:

Head Office, Company's Building, Montreal

J. GARDNER THOMPSON,
Resident Manager.

Wm. JACKSON, Deputy Manager.

J. W. BINNIE, Asst. Deputy Manager.

CANADIAN DIRECTORS:

E. S. Clouston, Esq. Chairman.
Geo. E. Drummond, Esq. F. W. Thompson, Esq.
James Crathern, Esq., Sir Alexander Lacoste.

The Waterloo Mutual

Fire Insurance Company.

Established in 1863. Head Office, Waterloo, Ont

Total Assets, Jan. 1, 1906, \$509 708 13.

GEORGE RANDALL, Esq., President; William Snider, Esq., Vice President; Frank Haight, Esq., Manager; John Killer, Esq., Inspector.

CONFEDERATION LIFE

ASSOCIATION

HEAD OFFICE, TORONTO.

EXTENDED INSURANCE

CASH VALUE

PAID-UP POLICY

CASH LOANS

INSTALMENT OPTIONS

GUARANTEED

IN THE ACCUMULATION POLICY

WRITE FOR PARTICULARS

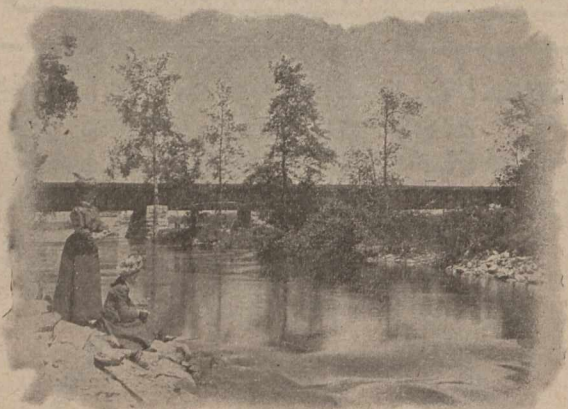
MONTREAL OFFICE

174 ST. JAMES STREET.

H. J. Johnston, - - - - - Advisory Director
A. P. Raymond, - General Agent, French Dept.

FOR SALE.

The property which the cut partly illustrates, is at the junction of the Ottawa and the St. Lawrence Rivers, some 25 miles west of Montreal, within easy reach by two railroads (general and suburban service, at frequent intervals day and night in 40 minutes); also by water.



The current between the mainland and one of the islands (as shown in the cut) is caused by a fall of several feet from the Lake of Two Mountains into the River St. Lawrence.

The mainland portion, on the edge of which the fishers appear in the engraving, contains nearly four acres; the island nearly one-fourth of an acre. The land slopes from a height of about ten or twelve feet to the lake and river.

The spot is quite picturesque, and as it is more or less preserved by the owner, there is scarcely any better fishing within double the distance of Montreal. There are excellent boating and shelter for yachts and small boats on the property.

With the above cut, the Grand Trunk Railway illustrates one of its recent booklets—that known as "Trains 3 and 4"—"Travel at Ease," page 12.

The place was anciently known as "Lotbiniere Pointe," but has been re-named by the owner "Roslevan" from its peninsular shape and the ancestral elms growing upon it.

The mainland portion and one island are now offered for sale on application to the owner,

M. S. FOLEY,

Editor-Proprietor of the

"Journal of Commerce,"

Montreal.

The Royal-Victoria Life Insurance Co.

The Directors' Report for 1906 shows large increases during the year

IN CASH INCOME

IN LEGAL RESERVES

IN INVESTED ASSETS

IN LOANS to POLICYHOLDERS

IN PAYMENTS to POLICYHOLDERS

And 7½ per cent. Reduction in Expenses of Management for year.

No Interest Overdue or Unpaid on Investments at end year.

APPLY FOR AGENCIES TO

DAVID BURKE, A.I.A., F.S.S.

General Manager Montreal.

WESTERN ASSURANCE COMPANY.

FIRE AND MARINE. Incorporated 1851

Assets, over - - - - - \$3,570,000

Income for 1906, over - - - - - 3 600,000

Head Office. - Toronto, Ont.

FIRE AND MARINE. Incorporated 1851.

Hon. Geo. A. Cox, President; W. R. Brock, Vice-President;

W. B. Meikle, General Manager; C. C. Foster, Secretary.

Montreal Branch, - - - 189 ST. JAMES STREET.

ROBERT BICKERDIKE, - - - Manager.

FIRE. LIFE. MARINE. ACCIDENT.

Commercial Union Assurance Co.,

LIMITED OF LONDON, ENG.

Capital fully Subscribed.... ..\$12,500,000

Life Funds (in special trust for Life Policy

Holders)..... 16,263,810

Total Annual Income exceeds..... 16,250,000

Total Funds Exceed Sixty two and one half Million Dollars.

HEAD OFFICE, Can. Br., 91 Notre Dame St. West, Montreal.

JAMES MCGREGOR, Manager.

W. S. TOPLING, Superintendent Agencies.