

MUNICIPAL ENGINEERS, CONTRACTORS AND MATERIALS

WILLIS CHIPMAN

Hon. Grad. McGill University.
M. Can. Soc. C.E. M. Am. Soc. C.E.
Mem. Am. W.W. Ass'n.

**WATERWORKS, SEWERAGE WORKS, GAS
WORKS, ELECTRIC LIGHT AND
POWER PLANTS**
Reports, Surveys, Construction, Valuations
103 BAY STREET - TORONTO

R. E. SPEAKMAN, C.E.

A. M. Inst. C. E., 1875.

CONSULTING ENGINEER

Waterworks, Sewerage and Sewage Disposal.
Municipal Improvements.
Granolithic Pavements.
Electric Light Plants.
Drainage and Irrigation of Land.
Coal Handling Plant and Machinery.
Plans, Specifications and Estimates.
Construction and Valuations.

Canada Life Building - TORONTO

Roderick J. Parke

Am. Can. Soc. C.E., A.M. Amer. Inst. E.E.

CONSULTING ENGINEER

Hydraulic Power Development. Long Distance
Power Transmission. Steam Plants, Electric
Lighting and Power Systems. Tests.
Valuations. Reports.

409-410 Temple Building, TORONTO, CANADA

Telephones: Office—Long Distance Main 3047
Residence—Long Distance North 2204
Telegraphic address: "R. J. Parke."
W. U. Code, Univ. Edition.

H. F. STRICKLAND**ELECTRICAL ENGINEER**

SPECIALTY: Reports, Valuations, &c., for
negotiations relative to Municipal
Ownership.

35 ADELAIDE ST. E., TORONTO
Phone, Main 1838.

ROSS & HOLGATE**Consulting and
Supervising Engineers**

Waterworks, Electric Light and Power
Plants, Structural Work, Reports,
Estimates, Arbitrations.

17 ST. JOHN ST. - - - MONTREAL
McKINNON BLDG. - - - TORONTO

Percival W. St. George

Mem. Inst. C. E. London, England.
Mem. Can. Soc. C. E.

CONSULTING ENGINEER

Railway, Sewerage, Water, Hydraulic,
Expert and Arbitrations, &c.

BELL TELEPHONE BLDG. MONTREAL
Telephone, Main 4717.

JAMES C. KENNEDY

MEM. CAN. SOC. C.E.

CIVIL AND HYDRAULIC ENGINEER

Examinations, Reports, Plans, Estimates,
Supervision of Construction, Water
Powers, Water Works, Sewerage, etc.

P. O. Box 710, Owen Sound, Ont., and
877 Dorchester Street, Montreal, Que.

GEO. L. GRIFFITH, C.E.

Mem. Dom. Inst. Amal. Eng.; Mem. Can.
Min. Inst.

Municipal Engineering in General.

Waterworks, Sewerage and Sewage
Disposal, Street Railways, Concrete
Pavements, Concrete Steel Bridges,
Drainage and Irrigation, Water Power
Development, Reports, Plans, Specifi-
cations, Estimates, Construction.

General Instrumental Surveys undertaken for
Public Works of every description.

Bank of Hamilton Chambers, Winnipeg, Man

**THE PHOENIX BRIDGE & IRON WORKS,
MONTREAL****GENERAL STEEL CONTRACTORS**

Large Stock I BEAMS, CHANNELS, ANGLES, TEES, ZEES and
PLATES always on hand.

THE CANADIAN SEWER PIPE CO.

MANUFACTURERS OF



FOR

**Sewers, Culverts and Water Pipes
Inverts for Brick Sewers**

WRITE FOR DISCOUNTS

ST. JOHNS, P. Q.

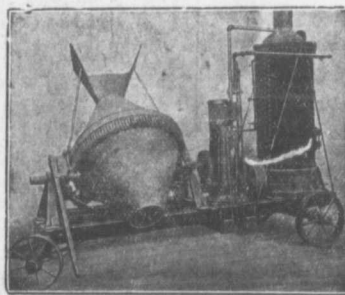
HAMILTON, ONT.

TORONTO, ONT.

SMITH
CONICAL
CONCRETE
MIXER

18

Different
Sizes and
Styles.



Mixes in Batches. Discharges by Tilting while
Running. Mounted on Skids or Trucks.

Catalogue on Application.

— SOLE CANADIAN AGENTS —

**W. H. C. Mussen & Co., 763 Craig St.,
MONTREAL**

**CANADIAN
CONTRACTOR'S
HAND-BOOK**

and
Estimator

Third Edition

Price \$1.50; to
subscribers of
the Canadian
Architect and
Builder, \$1.00.

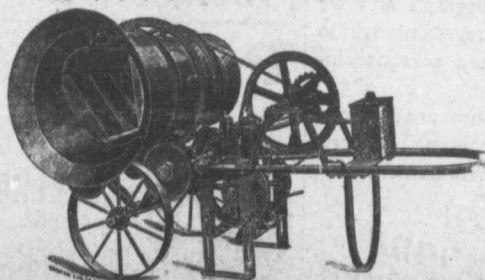
SEND FOR A COPY

C. H. Mortimer
Publishing Co.
Toronto.

Please mention THE CONTRACT RECORD when corresponding with advertisers.

THE McKELVEY CONCRETE MIXERS

MANUFACTURED BY **W. A. McKELVEY,** McKinnon Building,
TORONTO.



These machines
are made to mix
either continu-
ously or in
batches, and can
be operated
either by Hand,
Steam or Gas-
oline Power