

Club music highlights

by Tracy Rowan

Since this is the last issue of *The Gateway* this term, I thought I would give those of you who are not madly studying for exams a rundown of some musical best bets coming to Edmonton this month.

Andante's highlights include the Eddie Patterson Project with Big Miller (Dec. 7) — you'll remember these guys were a big hit at the Freshman week Beer Gardens here in September. Also showing are the Burners (Dec. 17-19), one of the few hot bands to come out of Calgary.

The Sidetrack hosts a couple of really good dance bands this month, namely Penguins on Broadway (Dec. 4-5), a ten piece live and swing outfit, and rock 'n' rollers Billy Cowsill and the Heartbeats (Dec. 10-12), who will have you tapping along with lots of old favourites.

One of the lesser know blues spots in town, Billy Budd's, will feature a couple of artists who have performed at the 1986 and 1987 Edmonton Folk Music Festivals: harmonica ace Rusty Reed, and the South Side

Shuffle (Dec. 2-5) and one of Alberta's most up and coming singer/songwriters Bill Bourne (Dec. 10-12).

The Howlin' Wolf is a relatively new roots/R'n'B club which has so far showcased some really top-line acts this fall. One of my best sources tipped me on Mark Hummel and the Blues Survivors (Dec. 3-5 and 8-12) who are supposedly one of the hottest bands in the San Francisco Bay area. Also appearing at the Wolf will be some of the city's best blues musicians (such as Lionel Rault) and visitors the likes of Amos Garrett, (one of my personal faves) over New Year's week.

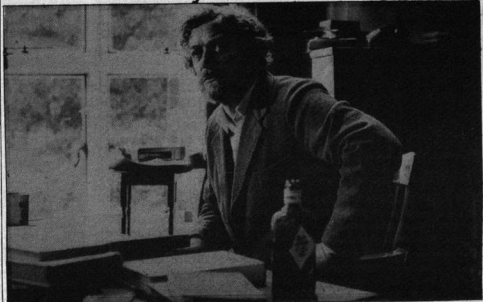
Lastly to look out for are one of Toronto's most promising bands, the Jitters. If their videos are any indication, these guys really look like a fun act to see, and their recent album on Capitol is definitely worth a listen. The Jitters bring their own style of rock 'n' roll to the Beverly Crest (Dec. 11, 12) and to Barry T's (Dec. 13) on their first Western tour.

Give yourself a break before the finals grind and check out some of the fine live acts around Edmonton this month.

Looking for an outlet for your creative ideas?

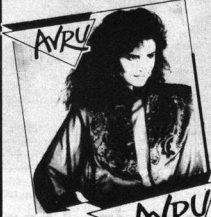
ENTER The Gateway's Literary Contest

Three categories to choose from:
Short Poem Long Poem Short Story
Contact Sherri or Elaine at
The Gateway for more information



Hmmm...what can I write for *The Gateway* contest?

WHY PAY RETAIL PRICES???



Hours: Mon.-Fri. 9-5
Sat. 10-5

Wholesaler's Warehouse Open
To The Public

Buy Direct and SAVE!

100% Cotton Blouses...from **3.99**

100's of solids, prints, flannels
Great with jeans

Co-ordinating Skirts.....from **3.99**

Edmonton's largest selection of SILK
SEQUIN DRESSES from \$150 compare at \$800

Wide selection of current fall fashions at
unbelievably low prices.

**AVRU INTERNATIONAL
TRADING
LTD.**

12105-120 AVE.
455-2511

Mon	Tue	Wed	Thu	Fri	Sat	Sun
9-5	9-5	9-5	9-5	9-5	10-5	
Open	Open	Open	Open	Open	Open	Open

Licensed

HOT PASTRAMI DELI

across from the U of A Hospital
(8405 - 112 St.)
432-1371

— New Features —

- * New Korean Dishes
- * Cappuccino Coffee
- * Great Price on Happy Hour (3 - 6 p.m.)
- * Breakfast Specials
- * Italian Ice Cream

Clubs, Fraternities, Staff Parties
Reserve Your Meeting Room
NOW At Low, Special Prices

SAVE \$1.00

Hot Pastrami Deli
(8405 - 112 St. Across U of A
Hospital
One Dollar OFF
on meal orders of \$5.00 or
more.