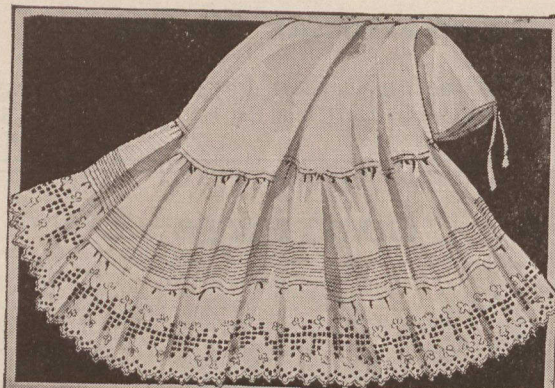


# A Bountiful Harvest of *Acme* Underwear Values

Every penny of price represents intrinsic worth, there being only the one small **EATON** profit added to the cost of production. The garments are of our own manufacture and we guarantee them to be of superior value in every detail. Our *Acme* brand has fought its way to the front through sheer merit. It is extremely popular and in great demand—so much so that you should have no hesitation in sending us an order at once. Remember *Acme* Brand stands for the very best in material, make, fit and finish, that can be bought at the prices we ask.



**R1-2651. Women's *Acme* Skirts**, made of soft finished cotton, French bands, deep flounce of fine lawn with two clusters of five fine tucks, one row of wide lace insertion and wide hemstitched hem. Lengths 38, 40 and 42 inches. **Sale Price 59c**



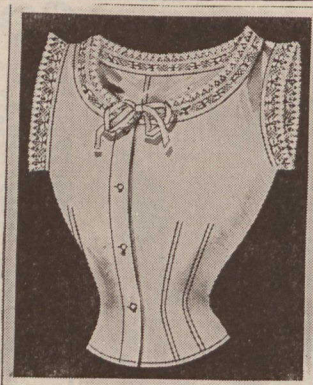
**R2-2652. Women's *Acme* Skirts**, made of soft finished cotton, French band, deep flounce of fine lawn with cluster of ten fine tucks, and nine inch frill of fine embroidery. Lengths 38, 40 and 42 inches. **Sale Price 87c**



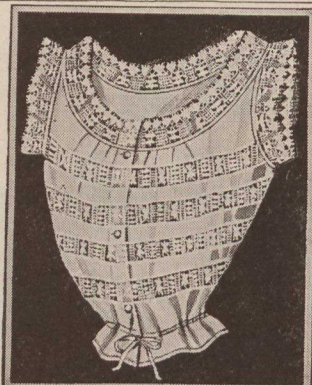
**R1-2653. Women's *Acme* Skirts**, made of soft finished cotton, French band, deep flounce of fine lawn with two rows of fine lace insertion and two hemstitched tucks, also frill of lawn with one row of fine lace insertion, two hemstitched tucks and edge of fine wide lace, dust ruffle. Lengths 38, 40 and 42 inches. **Sale Price 1.10**



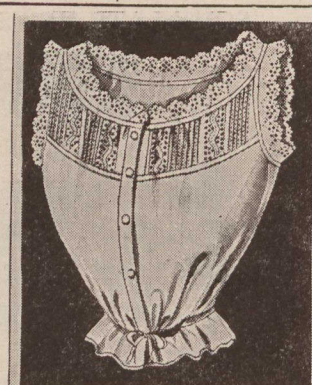
**R1-1651. Women's *Acme* Gowns**, made of soft finished cotton, Mother Hubbard yoke of four clusters of fine tucks, four rows of lace insertion, neck and sleeves finished with frill of lace. Lengths 56, 58 and 60 inches. **Sale Price 49c**



**R1-3651. Women's *Acme* Corset Covers**, made of fine cotton, tight fitting, neck and arms finished with edge of lace. Sizes 32 to 42 ins. bust measure. **Sale Price 22c**



**R1-3652. Women's *Acme* Corset Covers**, made of fine cotton, full front, trimmed with four rows of lace insertion and frill of lace on neck and arms. Sizes 32 to 42 ins. bust measure. **Sale Price 33c**



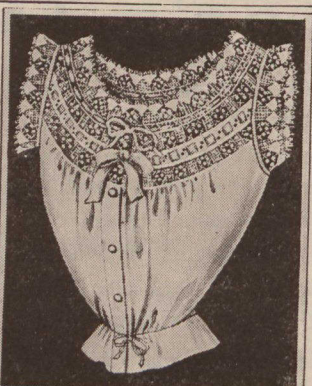
**R1-3653. Women's *Acme* Corset Covers**, made of fine cotton, full front, round yoke of four rows of embroidery insertion, four clusters of five hemstitched tucks, frill of embroidery on neck and arms, sizes 32 to 42. **Sale Price 39c**



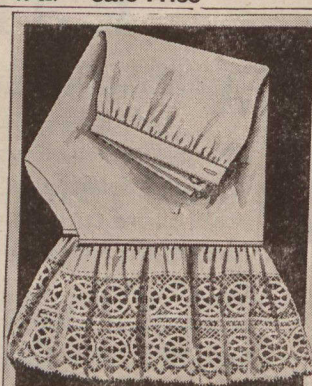
**R1-1652. Women's *Acme* Gowns**, made of soft finished cotton, slip-over style, finished with frill of fine embroidery and ribbon draw, elbow sleeves finished with frill of fine embroidery. Lengths 56, 58 and 60 ins. **Sale Price 59c**



**R1-4651. Women's *Acme* Drawers**, made of soft finished cotton, deep umbrella flounce of fine lawn with wide hemstitched hem, open or closed styles. Sizes 25 and 27 ins. **Sale Price 22c**



**R1-3654. Women's *Acme* Corset Covers**, made of fine nainsook, full front, finished with two rows of fine lace insertion, one row of fine embroidery, beading and ribbon, neck finished with fine lace, beading and ribbon, frill of lace on neck and arms. Sizes 32 to 42 ins. bust. **Sale Price 55c**



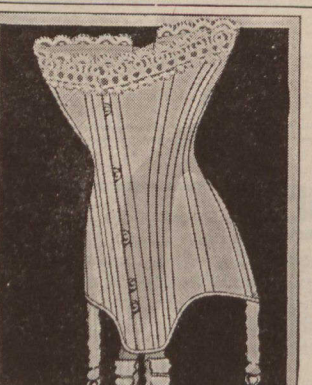
**R1-4653. Women's *Acme* Drawers**, made of soft finished cotton, flounce of fine cotton with one row of lace insertion and edge of wide lace, open or closed styles. Sizes 25 and 27 ins. **Sale Price 38c**



**R1-1654. Women's *Acme* Gowns**, made of soft finished cotton, Mother Hubbard style, yoke of six clusters of fine tucks, four rows of fine embroidery insertion, frill of fine embroidery down front and on neck and sleeves. Lengths 56, 58 and 60 ins. **Sale Price 95c**



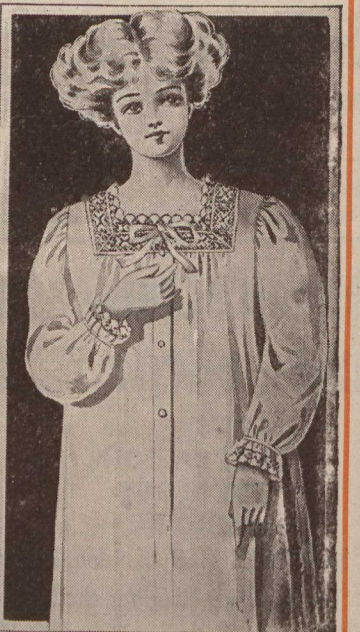
**R1-4652. Women's *Acme* Drawers**, made of soft finished cotton, flounce of fine lawn with cluster of five tucks and frill of lawn with edge of wide lace, open or closed styles. Sizes 25 and 27 ins. **Sale Price 33c**



**R2-220. Women's *Acme* Corset**, made of fine *Batiste*, two bone strips filled with fine tempered steel, Paris front clasp, extra long hip and back, medium high bust, perfect fitting, latest up-to-date model, color white. Sizes 18 to 30. **Sale Price 69c**



**R1-4654. Women's *Acme* Drawers**, made of soft finished cotton, flounce of fine lawn with one cluster of five tucks, one row of fine embroidery insertion and frill of fine embroidery, open or closed styles. Sizes 25 and 27 inches. **Sale Price 43c**



**R1-1653. Women's *Acme* Gowns**, made of soft finished cotton, Mother Hubbard style, square neck finished with one row fine lace insertion and frill of fine lace, sleeves finished with frill of fine lace. Lengths 56, 58 and 60 inches. **Sale Price 69c**

Write for our July and August Grocery Catalogue. It is a money-saver.

**THE T. EATON CO. LIMITED**  
TORONTO - - - CANADA

Our Mail Order System will serve you satisfactorily.