

UNION BANK OF CANADA

Established 1865

Head Office - Winnipeg

Paid-up Capital \$5,000,000
 Reserve and Undivided Profits \$3,000,000
 Total Assets, over 70,000,000

PRESIDENT - JOHN GALT

VICE-PRESIDENTS:

W. PRICE R. T. RILEY

DIRECTORS:

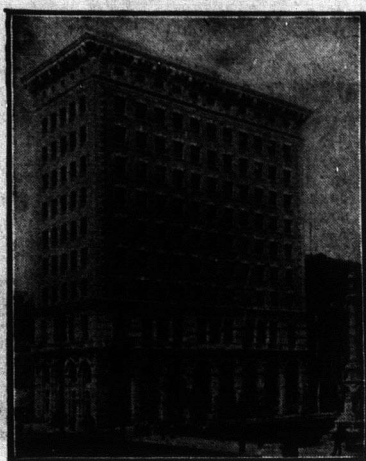
W. R. ALLAN S. HAAS
 S. BARKER, M.P. F. E. KENASTON
 M. BULL F. W. HEUBACH
 Lieut-Col. J. CARSON G. H. THOMSON
 E. L. DREWRY W. SHAW
 E. E. A. DU VERNET, K.C.

G. H. BALFOUR, General Manager.

H. B. SHAW, Assistant General Manager.

F. W. S. CRISPO, Superintendent of Branches and Chief Inspector.

London, England, Branch No. 51 Threadneedle Street, E.C.



Head Office, Winnipeg.

SPECIAL ATTENTION GIVEN TO FARMERS' BUSINESS

Grain Drafts Negotiated. Interest Allowed on Deposits.

Branches and Agencies West of Great Lakes:

Manitoba—Baldur, Birtle, Boissevain, Brandon, Carberry, Carman, Carroll, Clearwater, Crystal City, Cypress River, Dauphin, Deloraine, Glenboro, Hamiota, Hartney, Holland, Killarney, Manitou, Melita, Minnedosa, Minto, Morden, Neepawa, Newdale, Ninga, Rapid City, Roblin, Russell, Shoal Lake, Souris, Strathclair, Virden, Waskada, Wawanesa, Wellwood, Winnipeg.

Saskatchewan—Adanac, Alsask, Arcola, Asquith, Assiniboia, Bounty, Buchanan, Cabri, Canora, Carlyle, Craik, Cupar, Cut Knife, Esterhazy, Eyebrow, Fillmore, Gravelbourg, Gull Lake, Herbert, Humboldt, Indian Head, Jansen, Kerrobert, Kindersley, Landis, Lang, Lanigan, Leeville, Lemberg, Lumsden, Luseland, Macklin, Maple Creek, Maryfield, Milestone, Moose Jaw, Moosomin, Netherhill, Neudorf, Ogema, Outlook, Oxbow, Pense, Perdue, Plenty, Prince Albert, Qu'Appelle, Regina, Rocanville, Rosetown, Saskatoon, Sceptre, Scott, Simpson, Sintaluta, Southey, Strassburg, Swift Current, Tessier, Theodore, Toga, Tompkins, Vanguard, Viceroy, Wapella, Wawota, Watrous, Webb, Weyburn, Wilkie, Windhorst, Wolseley, Yorkton, Zeelandia.

Alberta—Airdrie, Alix, Barons, Bashaw, Bassano, Bellevue, Blackie, Blairmore, Bowden, Bow Island, Brooks, Calgary, Carbon, Cardston, Carlstadt, Carstairs, Claresholm, Cochrane, Consort, Cowley, Didsbury, Edmonton, Fort Saskatchewan, Grande Prairie, Grassy Lake, High River, Hillebrand, Innisfail, Irvine, Lacombe, Langdon, Lethbridge, Macleod, Medicine Hat, Okotoks, Passburg, Pincher Creek, Seven Persons, Strathmore, Swallow, Three Hills, Wainwright.

British Columbia—Enderby, Hazelton, Nanaimo, New Hazelton, Prince Rupert, Telkwa, Vancouver, Vernon, Victoria, New Westminster.

This Bank, having over 300 branches in Canada, extending from Halifax to Prince Rupert, offers excellent facilities for the transaction of every description of banking business. It has correspondents in all cities of importance throughout Canada, the United States, the Continent of Europe, and the British Colonies. Collections made in all parts of the Dominion, and returns promptly remitted at lowest rates of exchange.

Winnipeg Branch, D. M. NEEVE, Manager. F. K. WILSON, Asst.-Manager.
 F. J. BOULTON, Manager Portage Ave. Branch, Cor. Garry.
 (Adjoining Post Office)

Farmers

It pays you to have your GRAIN handled and disposed of by a firm working solely on a commission basis, and who, although handling some millions of bushels every year, never buy a bushel of the farmer's grain on their own account.

As you, therefore, desire to have the very best service, and the best possible attention to your individual interests in turning your grain into money, please continue to ship your grain to us, and you will be certain to receive the highest possible price going at time of sale, besides prompt, intelligent and courteous attention in correspondence, accounts and statements. Keep in mind we are always prepared to make liberal advances on grain after it is shipped from country points.

In order that we may supervise the inspection of your grain and get the terminal elevator weights promptly, be sure and write on your shipping bills "Notify Thompson, Sons & Company, Winnipeg."

Address all correspondence and inquiries to

THOMPSON, SONS & CO.

Grain Commission Merchants

700-703A Grain Exchange

WINNIPEG, CANADA

SPECIAL FALL OFFER

WEEKLY FREE PRESS and PRAIRIE

FARMER, Winnipeg - - \$1.00

WESTERN HOME MONTHLY, Winnipeg 1.00

REGULAR Price - - \$2.00

SNAP OFFER

Both for One Year

\$1.00

This offer does not apply to those living within the City of Winnipeg limits or in the United States of America. It holds good, however, to Great Britain.

1913

WESTERN HOME MONTHLY, Winnipeg.

Find enclosed \$1.00 for which send the Weekly Free Press and Prairie Farmer, Winnipeg, and The Western Home Monthly to the following address for one year.



Endurance
 Counts
 Most

WHEN your sheds are full of machines and one or two are crowded out into the open, which is it that invariably stands

outside, with the sun and the wind beating on it every day, drying and warping the wood, or with rain rusting the iron? It's the wagon. Other machines are stored away, but the wagon works the year around, is always under the strain of heavy burdens, always getting rough treatment. It can't stand the strain of such a life for many years unless, like I H C wagons—

Petrolia Chatham
 Hamilton Old Dominion

it has built into it the utmost of endurance, toughness, and sturdiness. I H C wagons are built of wood of very best quality, every bit as good as they look. Examine them closely; you find no cross-grained, knotty, split, or faulty timber. Every stick, oak and hickory for the wheels, yellow or bay poplar for box sides and long leaf yellow pine for bottoms, is selected from first grade lumber and carefully inspected. Every stick is toughened and seasoned by two or three years of air-drying. No brittle kiln-dried lumber is used.

All steel and iron parts are chosen with the same end in view—greatest durability and longest life. Experts test and verify every part. Before the wagon is ready for you it must pass many thorough inspections. The timber, metal, shaping and fitting, painting, every detail down to every brace and bolt, must be just right.

Buy one now, watch its steady service on your farm, and mark this—your future reliance will be on the I H C wagon. That future order is our ultimate aim. Ask the I H C local agent to show you the I H C wagon best suited to your needs. Get catalogues from him, or, write the nearest branch house.

International Harvester Company of Canada, Ltd

WESTERN BRANCH HOUSES:

At Brandon, Man.; Calgary, Alta.; Edmonton, Alta.; Estevan, Sask.;
 Lethbridge, Alta.; North Battleford, Sask.; Regina, Sask.; Saskatoon,
 Sask.; Winnipeg, Man.; Yorkton, Sask.

