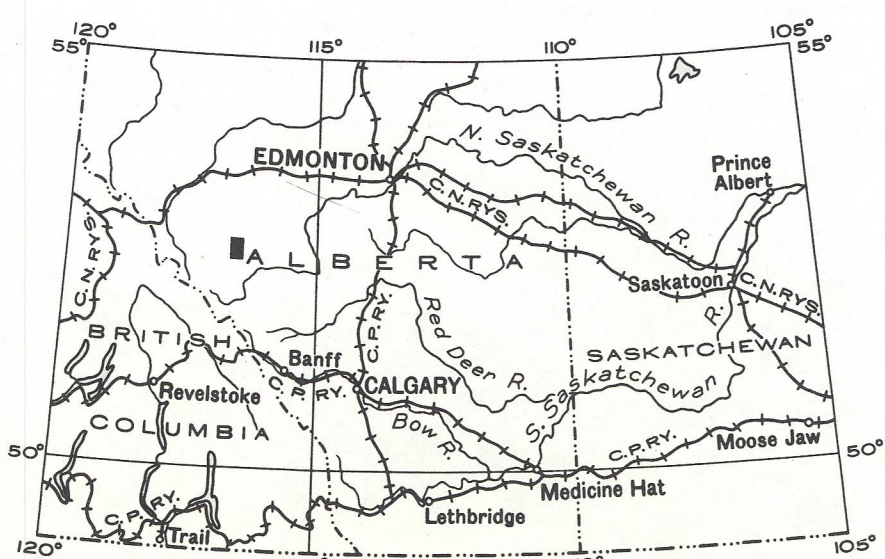
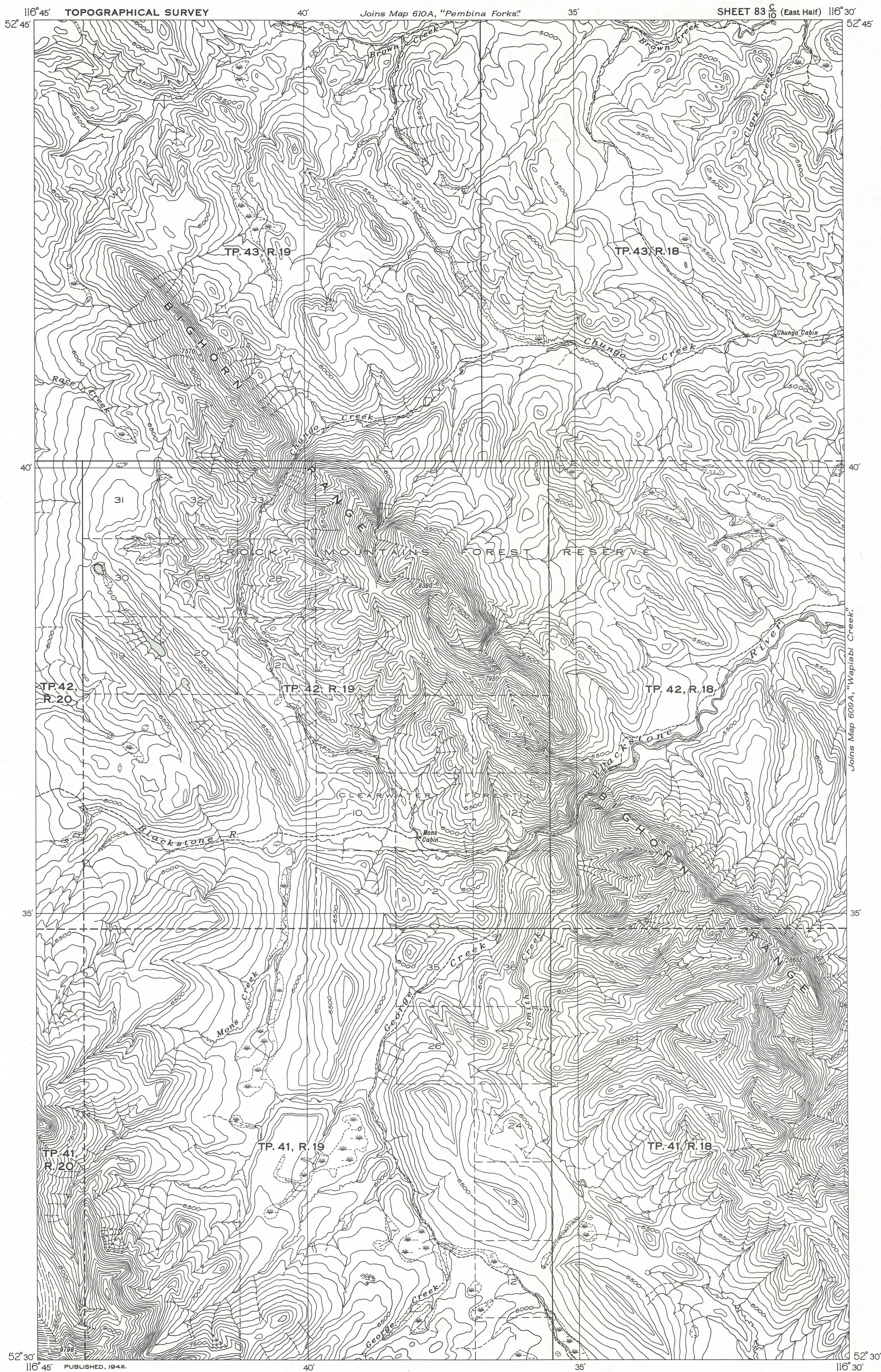


CANADA
DEPARTMENT OF MINES AND RESOURCES
MINES AND GEOLOGY BRANCH
BUREAU OF GEOLOGY AND TOPOGRAPHY

PROVISIONAL MAP



- LEGEND
- Trail
 - Abandoned building
 - Township boundary (surveyed)
 - Township boundary (unsurveyed)
 - Section line
 - Intermittent lake and stream
 - Marsh
 - Sand or gravel
 - Contours (interval 100 feet)
 - Contours (position approximate)
 - Height in feet above Mean sea-level

Surveys and topography by the Topographical Survey, 1938, and 1939. Cartography by the Drafting and Reproducing Division, 1941.

Converted from 1:63,360 to 1:50,000 without revision, by the Surveys and Mapping Branch, Department of Mines and Technical Surveys, Ottawa.

SUPERSEDED EDITION

83 $\frac{E}{O}$