

SIMPSON Store Opens 8 a.m. Closes at 5.30 p.m. H. H. Fudger, Pres. J. Wood, Manager **PROBS.** Moderate to fresh westerly to northerly winds; fair and cooler. **SIMPSON**

Parents and Guardians---Please Take Notice

That the school opening is not far off, and provision must therefore be made for clothing certain young scamps.

That there is no need to trouble *them* with the shades of their prison-house, but you should be planning.

That the best clothing plans are those that are laid early in the season---when fresh stocks are just being opened and everything in our Boys' Shop is in apple pie order.

That to-morrow would be a very good time to see just what there is new and attractive in our stock for boys. Here are a few suggestions.

Boys' English Tweed Three-piece Suits, in dark grey mixture, showing fancy colored stripes, coat double-breasted style. Tailored perfectly and finished with best quality linings and trimmings, vest 5-button single-breasted style, plain knee pants. Sizes 29 to 33 **4.50**

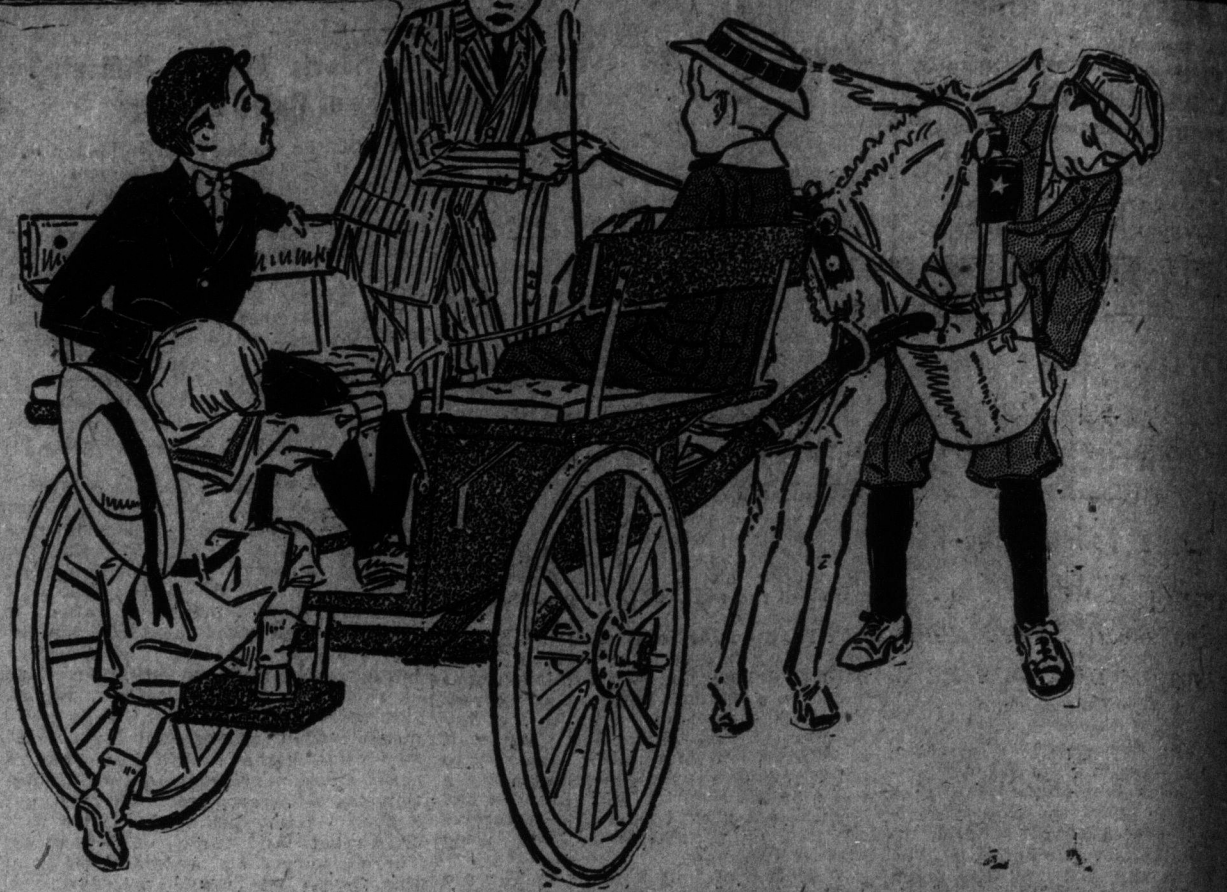
Boys' Two-piece Suits, heavy Scotch tweed, with bloomer pants, rich dark brown diagonal stripe pattern. A dressy and durable suit. Coat latest 3-button double-breasted style, with close fitting collar and shapely lapels. Sizes 27 to 33 **6.50**

Boys' Two-piece Bloomer Pant Suits, made from a fine imported tweed, in a medium fawn mixture, showing a self-brown stripe. A new double-breasted American model; excellently tailored in every way. Pants made extra full and roomy, with strap and buckle at knee. Sizes 27 to 34 **8.50**

Three-piece Suits, English tweed, in medium grey ground, with fancy thread stripes, coat 3-button single-breasted sack style, tailored in the best possible manner, and finished with fine twill mohair linings. Sizes 29 to 33 **7.50**

Boys' Tweed Two-piece Bloomer Pant Suits, in dark grey mixture, with neat fancy colored stripe, coat 3-button double-breasted style, nicely tailored, pants made full and roomy, with strap and buckle at knee. Sizes 25 to 30 **5.50**

BOYS SHOP



"Two Months Married, and No China Smashed!"

Not many June brides can make this statement that we heard from one who was in the other day getting some brass ware. Most of them will be glad to find this sale of **Bridal Rose China**, to-morrow. Plates may be replaced at fifteen cents each.

- 1,400 pieces Bridal Rose Chinaware, comprising dinner, coupe soup and breakfast plates. Thursday, each **15**
- 102 pieces Limoges China Dinner Set, dainty apple blossom spray design, all pieces gold stippled. Thursday **39.75**
- 300 dozen Tumblers, straight and bell shape, melted edge, clear finish. Thursday, special, dozen **49**
- Brass Kettles, bright finish, amber handles, footed, heavy cast and spun weight. Sizes 2, 3 and 4 quart. Regular to \$4.00. Thursday **1.98**

New Bedroom Wallpapers

(Fifth Floor.)
The latest shadow corduroy stripe, grey lattice, mottled, tweed, Oxford, chambray and linen effects, basket and burlap weaves, in light shades and blendings of pink, blue, grey, green, cream, tan, yellow, old rose, white shaded grounds, from best English and American mills. Per roll, 15c, 25c, 35c, 50c, 75c and \$1.00.
Cut-outs, Friezes and Medallions, in floral, fruit, scenic, birds, tattered and plain, in assorted colorings for upper panels and dividers. Per yard, 5c, 10c, 15c, 25c and 50c.
Bedroom Mouldings, in white enamel, cherry and oak colorings. Per foot, 1/2c, 2/2c, 4c and 8c.

The Lace Curtain Sale

(Fourth Floor.)
Wages in Nottingham factories are rising, and the price of lace curtains is bound to go up this fall. The "saving" to be effected by buying at this curtain sale is apparent now, but it will strike those who put off much more forcibly when they come to add the reduction offered at the sale to the increase in regular prices later on. It practically means two pairs now for the price of one pair later.

Don't let Thursday pass without taking advantage of the bargains on the fourth floor.

- Nottinghams, worth up to \$1.50, Thursday **97**
- Nottinghams, worth up to \$2.00, Thursday **1.47**
- Nottinghams, worth up to \$3.00, Thursday **1.97**
- Swiss Curtains, worth up to \$3.50, Thursday **2.47**
- Arabe Curtains, worth up to \$4.50, Thursday **2.97**
- Battenburg Curtains, worth up to \$5, Thursday **3.47**
- Marie Antoinette, worth up to \$6, Thursday **3.97**

3,000 yards of Scotch Printed Linoleum, in new blocks, floral, tile and matting designs. Perfect goods, and thoroughly seasoned. Prices have been recently advanced, and when these are gone we will not be able to sell such goods for the price we ask on Thursday, per square yard **37**

Men's First-Class Underclothes and Shirts

750 Garments of Men's Pure Natural Wool Shirts or Drawers, summer weight, in light and dark shades, also pure white, in flat knit or elastic rib style; sizes in the lot 34 to 46. Regular prices \$1.00, \$1.25 and \$1.50. Thursday, each garment **75**

500 Men's Summer Outing Shirts, odd lines, samples, etc., including shirts with separate double collar, some with reversible collar, others with attached collar, several different shades, in plain or fancy to choose from. Sizes 14 to 17. Regular \$1.00 and \$1.25. Thursday **50**

Men's Hats

Derby and Soft Hats, new fall styles, in fine English and American fur felt, black and colors. Thursday **1.50**

Golf or Hook-down Shape Caps, in checks, stripes, plaids or fancy mixtures, in fine imported tweeds and worsteds, best finish. Thursday **40**

Crush or Knockabout Hats, Christy's English make, 2 oz. weight, extra quality fur felt; colors blue, brown, fawn, slate or black. Special **2.00**

The Furniture Sale Shows a New Phase of Its Helpfulness To-morrow

Many a young couple will be glad of the news they read here; the modest furnishings of the house they moved into a couple of months back did not include a good brass bedstead, because good brass bedsteads cost more money than they cared to spend---last June.

But now! Whoever heard of such prices as these on good brass bedsteads! No one, madam, for they've never been sold at these prices before. And these are the guaranteed kind of bedsteads that'll look as well years hence as they do now.

Not so long ago a brass bedstead was regarded as a luxury; now it is the sine qua non of nearly every modern home. At any rate, there will be fewer homes without them after these prices are published.

When we found manufacturers willing to waive profits on dull-season work, we took advantage of the opportunity to buy a stock of metal beds, brass and iron, at prices quite unheard of before. **Good brass beds were never before sold at such low prices as these.**



- Brass Bedsteads**, heavy upright posts, with filling evenly distributed, in full size only, and in bright or satin finish. Regular price \$13.50. August Furniture Sale **9.49**
- Brass Bedsteads**, with posts 2 inches in diameter, and upright fillers equally strong, in full size and bright finish. Regular price \$20.00. August Furniture Sale **15.80**
- Brass Bedsteads**, with heavy continuous posts, in bright or satin finishes, well made and finished. Regular price \$21.00. August Furniture Sale **15.85**
- Brass Bedsteads**, in combination finish, a heavily built, pleasing design, in full size only. Regular price \$28.75. August Furniture Sale **21.45**
- Brass Bedsteads**, bright finish, with continuous posts and extra heavy upright filling, one of the most desirable beds we have ever been able to offer. Regular price \$29.50. August Furniture Sale **23.60**
- Brass Bedsteads**, of good workmanship throughout, built on straight lines, in full size, and bright finish. Regular price \$34.00. August Furniture Sale **27.35**
- Iron Bedsteads**, in pure white enamel finish, with brass trimmings, made in all standard sizes. Regular price \$3.25. August Furniture Sale **2.50**
- Iron Bedsteads**, made in all standard widths, and finished in pure white enamel, heavy brass caps on posts. Regular price \$4.50. August Furniture Sale **3.45**
- Iron Bedsteads**, finished in pure white enamel, brass rods and caps at both head and foot ends, made in all standard widths. Regular price \$4.75. August Furniture Sale **3.65**
- Iron Bedsteads**, in pure white enamel finish, heavy brass rods and turned brass spindles at both head and foot ends. Regular price \$7.90. August Furniture Sale **6.45**
- Iron Bedsteads**, in light green or pure white enamel finish, fancy scroll design, with filling evenly distributed. Regular price \$8.40. August Furniture Sale **6.45**
- Iron Bedsteads**, in light green or pure white enamel finish, a good pattern, with heavy continuous posts and filling equally strong. Regular price \$11.50. August Furniture Sale **8.80**

The Robert SIMPSON Company Limited

PROBS. Moderate to fresh westerly to northerly winds; fair and cooler.

Solid

Hon. R. L. in Toronto Brilliant White Ve Element of Taft-Field astic Re Conserva

KEEN FOR CROWD

Let well en was the com last night. well enough again and aga the speaker; audience, and throats gave will ring thr Laurier will be ing will hear of Brantford saps its echo Washington, a ing wistfully learn that Co parting of the road to the ri

Many notable ever exceed that which g Conservative was a great triumph. Mr. with W. T. W ness of the I in a (Canada) White's speech for Canadian future. In si made his case points, and n dined every "In my opinio party polit of cheer. "It national issue (fiscal differ merged. It is and above th was not a si difficult and talk of larg hand and red other was not had a dollar t way, striu ce better off th money and h made for his States produce States consum population? said that we perity. I do drunk with p thing else. I there is nothi procity. (Hea "Canada, M in an infinite the United St three transo like of which The bank de ahead of any your money of the world money centre London and B

Pointing out redority M series of ban ally occurring The cause w stated: It wa constitution of an anachro elections ever a disturbing wonder they set rid of the "If the pri were lower th then advise th try to hold of for the futur ing the param producers for great consum the borders o to the Nation was, Mr. Whi spending Btu tion of the ro of a proposa construction ster into an s the effect of tic to the so ligh to carry "By implic which the Ca party censure tional gover export duty to insure its m hear.)

When Mr. E entire audie Conservative lo oua ovation hands, hand waved. For utize the ent after subdin afresh. Modc edged the co dressed many the past d'is realized the audience was party of the cheer to this c side who wery den. "The e evening of the will be the v Canada," he s time in reach a pleasure fo with men lik broken party pressure of a "They are c tion as men v no shoulder v prevent a na who have cast

Continued