

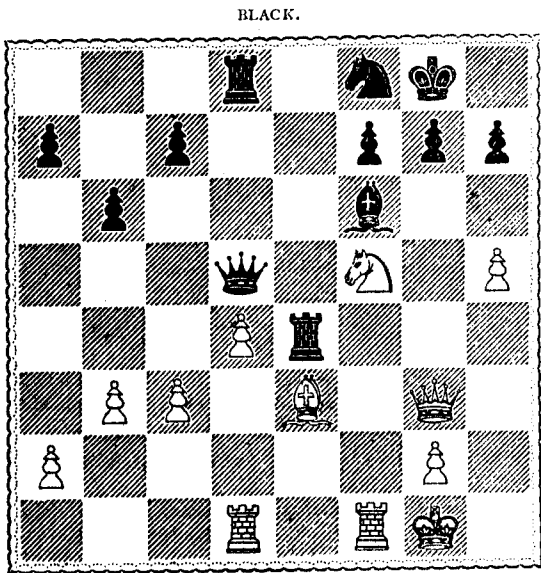
Chess.

All Correspondence intended for this Column, and Exchanges, should be directed to the CHESS EDITOR, CANADIAN SPECTATOR Office, 162 St. James Street, Montreal.

Montreal, October 16th, 1880.

END GAME NO. 2.

The following pretty End Game occurred recently in actual play between Rev. W. Wayte (White) and Rev. J. de Soyres (Black.)



WHITE.

White to move.

The game proceeded as follows:—

- WHITE. 1 Kt to R 6 (ch) 2 R takes B 2 B takes P 4 R takes Kt 5 R to K 5 and wins. BLACK. 1 K to R sq 2 P takes Kt (a) 3 Kt to K 3 4 R to K Kt sq (a) if 2 R takes B 3 P takes R 4 K to Kt 2 best (b) then 3 Q takes R 4 Q to K 7 5 K to B 5 (ch) and wins (b) 4 Q to Q 2, White may capture R, followed by Kt takes P (ch) &c.

SOLUTIONS OF TOURNEY SET NO. 17.—MOTTO: "Thrift, Thrift, Horatio."

PROBLEM NO. 110.—This problem unfortunately admits of two solutions; one commencing Q takes Kt (ch) and the author's Kt to Kt 7. We much regret to see this exceedingly beautiful stratagem spoilt by a double which could be so easily prevented by a White P on Q R 3. Both solutions have been sent by J. W. S.

PROBLEM NO. 111.

- White. 1 Q to Q B 3 Black. if R takes B if K to K 3 if Kt to Q 3 if R to K B 2 if B to K 2 White. 2 Q to Kt 3 (ch) 2 Q to K 5 (ch) 2 Q to B 5 (ch) 2 B takes R (ch) 2 Q to Q Kt 3 (ch) Black. K takes Kt K to Q 2 K to K 3 K takes Kt K takes Kt 3 Q mates accordingly 3 B to K 8 mate 3 Q takes Kt mate 3 Q mates 3 Q to Kt 7 mate.

We hope to be able to publish the Judges award in our next number.

GAME NO. LXXIII.

(From the Chess Monthly.)

Played at the Hamburg Chess Club, July 31st, 1880, between Mr. H. E. Bird and Herr M. Bier.

KING'S BISHOP'S GAMBIT.

- WHITE. H. E. Bird. 1 P to K 4 2 P to K B 4 3 B to B 4 4 B takes P 5 K to B sq 6 Kt to K B 3 7 P to K R 4 8 P to Q 4 9 B to Q B 4 (b) BLACK. M. Bier. 1 P to K 4 2 P takes P 3 P to Q 4 4 Q to R 5 (ch) 5 P to K Kt 4 6 Q to R 4 7 B to Kt 2 (a) 8 Kt to K 2 9 Q Kt to B 3 WHITE. 10 Kt to B 3 11 Kt to Q 5 (c) 12 P takes Kt 13 Q to K sq (ch) 14 P to Q 6 (l) 15 Q to R 5 (ch) 16 Q to Q 5 17 P takes Kt (e) 18 B takes P 19 R to K sq BLACK. 20 P to K R 3 21 Kt takes Kt 22 Kt takes P 23 K to Q sq 24 P takes P (d) 25 P to Kt 3 26 Kt takes Kt 27 K to B 2 28 R to Q sq (f) 29 B to K 3 WHITE. 30 R takes B (g) 31 B takes P (ch) 32 Q takes R 33 K to K 2 34 Q takes P (ch) 35 Q to R 8 (ch) 36 Q to R 7 (ch), and White drew by perpetual check. BLACK. 37 P takes R 38 R takes B 39 R to Q 8 (ch) 40 R takes R 41 K to B 2 (h) 42 K to B 2 (h) 43 K to B 2 (h) 44 K to B 2 (h) 45 K to B 2 (h) 46 K to B 2 (h) 47 K to B 2 (h) 48 K to B 2 (h) 49 K to B 2 (h) 50 K to B 2 (h) 51 K to B 2 (h) 52 K to B 2 (h) 53 K to B 2 (h) 54 K to B 2 (h) 55 K to B 2 (h) 56 K to B 2 (h) 57 K to B 2 (h) 58 K to B 2 (h) 59 K to B 2 (h) 60 K to B 2 (h) 61 K to B 2 (h) 62 K to B 2 (h) 63 K to B 2 (h) 64 K to B 2 (h) 65 K to B 2 (h) 66 K to B 2 (h) 67 K to B 2 (h) 68 K to B 2 (h) 69 K to B 2 (h) 70 K to B 2 (h) 71 K to B 2 (h) 72 K to B 2 (h) 73 K to B 2 (h) 74 K to B 2 (h) 75 K to B 2 (h) 76 K to B 2 (h) 77 K to B 2 (h) 78 K to B 2 (h) 79 K to B 2 (h) 80 K to B 2 (h) 81 K to B 2 (h) 82 K to B 2 (h) 83 K to B 2 (h) 84 K to B 2 (h) 85 K to B 2 (h) 86 K to B 2 (h) 87 K to B 2 (h) 88 K to B 2 (h) 89 K to B 2 (h) 90 K to B 2 (h) 91 K to B 2 (h) 92 K to B 2 (h) 93 K to B 2 (h) 94 K to B 2 (h) 95 K to B 2 (h) 96 K to B 2 (h) 97 K to B 2 (h) 98 K to B 2 (h) 99 K to B 2 (h) 100 K to B 2 (h)

Notes.—(a) The right reply: if 7 P to K R 3, White can proceed with 8 B takes P ch, Q takes B (best), 9 Kt to K 5, Q to Kt 2 (B 3), 10 Q to R 5 ch, K moves, 11 Kt to B 7 or Kt 6 ch accordingly, and 12 Kt takes R. (b) This retreat is weak; we greatly prefer the established continuation, 9 Kt to B 3. (c) The initiatory move of an attacking combination which loses a valuable Pawn, and should, therefore, prove unsound. 11 Kt to K 2 seems best. (d) Black could avoid a troublesome attack with: 14 B to K 3 15 P takes P ch K to B sq Much better than 15 K takes P, 16 Q to R 5 ch, P to Kt 3, 17 B takes P ch. 16 B takes B ch Kt takes B 19 Q to K 2 Q takes Q ch 17 B to Q 2 P to Kt 5 20 K takes Q P to B 2 18 Kt to R 2 Q to Kt 4 ch 21 P to B 2 Q takes P, K takes P, and Black is a Pawn ahead, and has a well-developed game. (e) The capture of the exchange would lose the game, e.g.: 17 Q takes R (?) Kt to R 7 ch (l) 18 K to K sq If 18 R takes Kt or 18 K to Kt sq, Black mates in three moves. 18 R to K sq ch P to B 6 19 K to Q 2 Q takes P R takes B ch 20 B to K 2 Q to B 7 Kt takes P ch, mating or winning the Queen. (f) 18 Q to Kt 3 would relieve Black from further pressure and preserve the numerical superiority, e.g.: 18 Q to Kt 3 R takes R 19 P takes P B to Kt 2 22 B to K 3 20 Q takes B P ch Q takes Q 24 B to Kt sq 21 B takes Q P takes P 25 R to Q sq If 25 R to Kt sq, then 25 B to Q 5; if 25 K to Kt 2, then 25 B takes P ch. (g) The ending is played in Mr. Bird's happiest style. (h) The way to escape the perpetual check is extremely hidden.

Ottawa River Navigation Company.



MAIL LINE DAY STEAMERS, BETWEEN MONTREAL AND OTTAWA.

Passengers for Ottawa and all intermediate ports take 7.15 a.m. train for Lachine to connect with steamer.

First-class Fare to Ottawa..... \$2.50 Do. return do..... 4.00 Second-class Fare to Ottawa..... 1.50

For the CALEDONIA SPRINGS, Excursion Tickets at reduced rates. Baggage checked through to all ports at Bonaventure Depot.

DAILY EXCURSION FROM THE CITY.

All Day Trip to Carillon and back (passing St. Anne's, Lake of Two Mountains, Oka, Como, Rigaud, North River, &c.) Nice Grove near the wharf at Carillon. Steamer remains there about one hour and a half. Returns to Montreal via Rapids, reaching the city at 6.30 p.m.

Fare for Round Trip from Montreal, \$1.25. On Saturdays, fare \$1.

DOWN THE RAPIDS EVERY AFTERNOON

Take 5 p.m. train for Lachine. Fare for Round Trip, 50c.

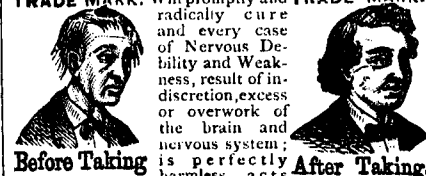
Saturday Afternoon Excursions to St. Anne's.

Leave Bonaventure Depot by 2 p.m. train (or an earlier train) for St. Anne's, returning home by steamer "Prince of Wales" via Rapids.

Fare for Round Trip, 80c from Montreal. Tickets at Company's Office, 13 Bonaventure street, or the Grand Trunk Railway Offices and Depot.

R. W. SHEPHERD, President.

GRAY'S SPECIFIC MEDICINE, THE GREAT ENGLISH REMEDY, TRADE MARK. Will promptly and radically cure and every case of Nervous Debility and Weakness, result of indiscretion, excess or overwork of the brain and nervous system; is perfectly harmless, acts



like magic and has been extensively used for over thirty years with great success. Full particulars in our pamphlet, which we desire to send free by mail to every one. The Specific Medicine is sold by all druggists at \$1 per package, or six packages for \$5, or will be sent free by mail on receipt of the money by addressing THE GRAY MEDICINE CO., TORONTO, ONT., Canada. Sold by all wholesale and retail druggists in Canada and the United States.

HOPE FOR THE DEAF

Garnore's Artificial Ear Drums

RESTORE THE HEARING and perform the work of the Natural Drum. Remain in position without aid, and are not observable. All conversation and even whispers heard distinctly. We refer to those using them. Send for descriptive circular. Address S. W. Corner 5th & Race Sts., Cincinnati, O.

SPERMATORINE

The new French Medicine cures Nervous Debility and all nervous complaints, resulting in Loss of Memory, Serious Impediments to Marriage, Great Depression, etc., 75c per box; three for \$2. Sold by druggists everywhere. Wholesale—LYMAN BROS. & CO., Toronto. Sent by mail, securely sealed, on receipt of price. Address Imperial Medicine Agency, Toronto.

FITS EPILEPSY, OR FALLING SICKNESS

Permanently cured—no humbug—by one month's usage of Dr. Goulard's Celebrated Infallible Fit Powders. To convince sufferers that these Powders will do all we claim for them we will send them by mail, post-paid, a free Trial box. As Dr. Goulard is the only physician that has ever made this disease a special study, and as to our knowledge thousands have been permanently cured by the use of these Powders, we will guarantee a permanent cure in every case, or refund all money expended. Price, for large box, \$3, or four boxes for \$10, sent by mail to any part of the United States or Canada on receipt of price, or by express, C.O.D.

CONSUMPTION POSITIVELY CURED.

All sufferers from this disease that are anxious to be cured should try Dr. Kissner's Celebrated Consumptive Powders. These Powders are the only preparation known that will cure Consumption and all diseases of the Throat and Lungs—indeed, so strong is our faith in them—and also to convince that they are no humbug—we will forward to every sufferer, by mail, post paid, a free Trial box. We don't want your money until you are perfectly satisfied of their curative powers. If your life is worth saving, don't delay in giving these Powders a trial, as they will surely cure you. Price, for large box, \$3, sent to any part of the United States or Canada, by mail, on receipt of price. Address

ASH & ROBBINS, 360 Fulton St., Brooklyn, N.Y.

DENVER, COLORADO.

A GENTLEMAN, going to reside in Denver, Col., would represent a house on commission. Best of references and security, if required. Address this office. 27

Goltman's Tailoring House

424 NOTRE DAME STREET.

With a view to clearing my very large and choice Stock of SCOTCH, ENGLISH and CANADIAN TWEEDS, I will make a REDUCTION on all orders for cash during this month.

Gentlemen desiring a first-class Suit will do well to call and see for themselves.

HUNDREDS OF PATTERNS TO SELECT FROM.

BOYS' CLOTHING A SPECIALTY.

SUITS READY-MADE OR MADE TO ORDER.

S GOLTMAN, 424 NOTRE DAME STREET.

PAULL & SON,

ARCHITECTS, &c.,

No. 3 Trust & Loan Buildings,

TORONTO STREET,

TORONTO.

TENDERS WANTED.

To Shippers and Wharfingers.

The Credit Harbour Tolls and Warehouses to let for one year or a term of years. The harbour is one of the best on Lake Ontario and offers unprecedented advantages to speculators. Immediate possession. All particulars and necessary information given by applying personally or by letter to

PAULL & SON,

No. 3 Trust & Loan Buildings,

TORONTO STREET,

TORONTO.



Midland Railway of Canada,

AND

WHITBY, PORT PERRY and LINDSAY R. R.

NOTICE TO SHIPPERS.

ALL FREIGHT FOR POINTS ON THE above roads should be shipped via the GRAND TRUNK RAILWAY, when it will be forwarded by the shortest route without transshipment and at the cheapest rates.

FAST FREIGHT TRAINS RUN THROUGH TO Peterborough, Fenelon Falls, Kinmount, Minden, Orillia, Lindsay, Haliburton, Midland, and Wau-bashene, connecting with fast steamers for Parry Sound and Byng Inlet.

For rates, etc., apply to local agents, or to A. WHITE, General Traffic agent, Port Hope.

GEO. A. COX, Managing Director, M. R. of C.

JAS. HOLDEN,

Managing Director, W., P. P., & L. Ry.

CHARLES D. EDWARDS,

MANUFACTURER OF

FIRE PROOF SAFES,

39 Bonaventure Street

MONTREAL.