



Hats, Caps and Furs!

OPENING of the FALL AND WINTER CAMPAIGN.
New styles in Men's, Youth's and Boys Hats. Scotch and Polo Caps in great variety. "Olivette," the new Corduroy Hat, at

R. W. COWAN & CO'S,
THE HATTERS AND FURRIERS,
CORNER OF
Notre Dame and St. Peter Streets.
CANADA PAPER CO.
Paper Makers and Wholesale Merchants,
374, 376 & 378 St. Paul Street.
MONTREAL, P. Q.
—AND—
11 FRONT STREET,
TORONTO, ONT.



ST. VINCENT DE PAUL PENITENTIARY.

Tenders for Firewood.

SEALED TENDERS, endorsed "Tender for Firewood," will be received at the Warden's Office until noon of the 2nd November, for the following quantities of firewood required for the year 1882-83, viz:
500 Cords of Hardwood—Maple and Birch, mixed in equal proportions.
400 Cords of Tamarac.
Blank forms of tender will be furnished and conditions made known on application to the undersigned.

HUNTLY B. MACKAY,
Acting Warden.

October, 1881.

40 CARDS, all Chromo, Glass and Motto, in case name in gold & jet 10c. West & Co. Westville, Ct.

THE COOK'S FRIEND
BAKING POWDER

Has become a HOUSEHOLD WORD in the land, and is HOUSEHOLD NECESSITY

in every family where Economy and Health are studied. It is used for raising all kinds of Bread, Rolls, Pancakes, Griddle Cakes, &c., &c., and a small quantity used in Pie Crust, Puddings, or other Pastry, will save half the usual shortening, and make the food more digestible.



SAVES TIME, IT SAVES TEMPER, IT SAVES MONEY.

For sale by storekeepers throughout the Dominion and wholesale by the manufacturer.

W. D. McLAREN, Union Mills,

47-57-66 55 College Street.

The Scientific Canadian

MECHANICS' MAGAZINE

AND
PATENT OFFICE RECORD
A MONTHLY JOURNAL

Devoted to the advancement and diffusion of Practical Science, and the Education of Mechanics.

THE ONLY SCIENTIFIC AND MECHANICAL PAPER PUBLISHED IN THE DOMINION.

PUBLISHED BY
THE BURLAND LITHOGRAPHIC CO.

OFFICES OF PUBLICATION,
5 and 7 Bleury Street, Montreal.

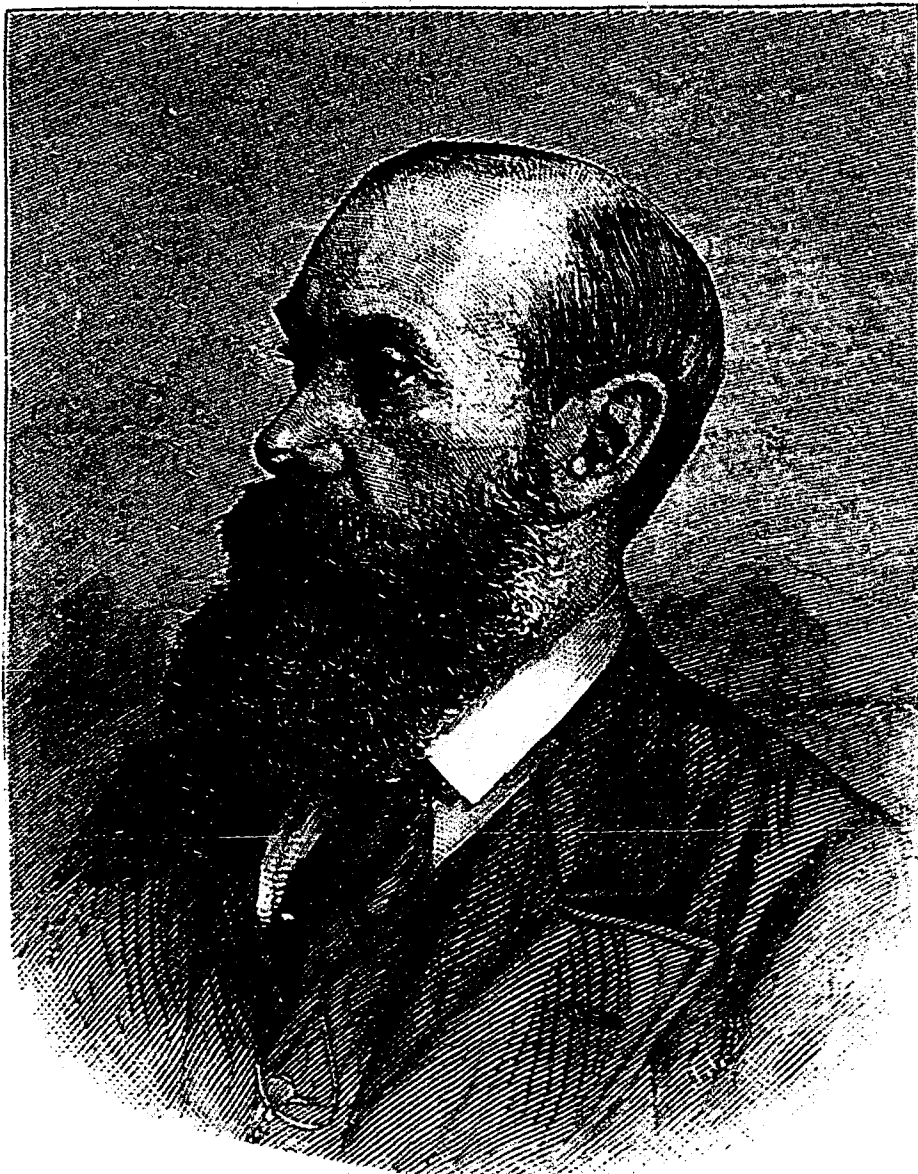
G. B. BURLAND General Manager.

TERMS:

One copy, one year, including postage.....\$2.00
One copy, six months, including postage.... 1.10
Subscriptions to be paid in ADVANCE.

The following are our advertising rates:—For one monthly insertion, 1) cts. per line; for three months, 8 cts. per line; for six months, 8 cts. per line; for one year, 7 cts. per line; one page of illustration, including one column description, \$30; half-page of illustration, including half-column description, \$20; quarter-page of illustration, including quarter column description, \$10. 10 per cent. off on cash payments.

Gray's
SYRUP OF RED SPRUCE GUM
SOLD BY ALL DRUGGISTS FOR COLDS & COUGHS



THE HON. LIONEL SACKVILLE-WEST,
THE NEW BRITISH AMBASSADOR TO WASHINGTON.

LIEBIG COMPANY'S



EXTRACT OF MEAT
FINEST AND CHEAPEST
MEAT-FLAVOURING
STOCK FOR SOUPS,
MADE DISHES & SAUCES.

An invaluable and palatable tonic in all cases of weak digestion and debility.
"Is a success and a boon for which Nations should feel grateful."
—See Medical Press, Lancet, British Medical Journal, &c.
To be had of all Storekeepers, Grocers and Chemists.
Sole Agents for the United States (wholesale only) O. David & Co., 48, Mark Lane, London, England.

CAUTION.—Genuine ONLY with fac-simile of Baron Liebig's Signature in Blue Ink across Label.

LEA & PERRINS' SAUCE



In consequence of Imitations of THE WORCESTERSHIRE SAUCE which are calculated to deceive the Public, Lea and Perrins have to request that Purchasers see that the Label on every bottle bears their Signature thus—



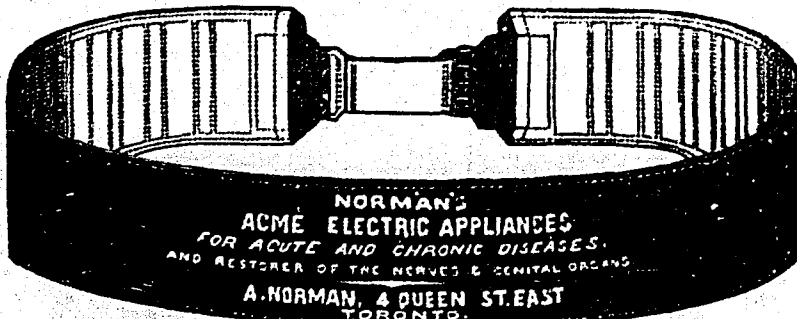
without which no bottle of the original WORCESTERSHIRE SAUCE is genuine.

Ask for LEA and PERRINS' Sauce, and see Name on Wrapper, Label, Bottle and Stopper. Wholesale and for Export by the Proprietors, Worcester; Crosse and Blackwell, London, &c., &c.; and by Grocers and Oilmen throughout the World.

To be obtained of
MESSRS. J. M. DOUGLASS & CO., MONTREAL; MESSRS. URQUIHART & CO., MONTREAL.

NORMAN'S ELECTRO-CURATIVE BELT INSTITUTION.

(ESTABLISHED 1874.)



NORMAN'S
ACME ELECTRIC APPLIANCES
FOR ACUTE AND CHRONIC DISEASES,
AND RESTORER OF THE NERVES & GENITAL ORGANS.
A. NORMAN, 4 QUEEN ST. EAST
TORONTO.

A. NORMAN, Electrician,
4 QUEEN STREET EAST, TORONTO, ONT.

CONSULTATION FREE. Large Circulars, with Testimonials, may be had on application.



South Eastern Railway

AND
Montreal and Boston Air Line
THE DIRECT AND BEST ROUTE

TO
White Mountains,
Concord, Manchester, Nashua, Lowell,
Worcester, Providence.
BOSTON

and all points in NEW ENGLAND, also to the EASTERN TOWNSHIPS.

On and after MONDAY, JUNE 27th, South Eastern Railway Trains will run to and from Bonaventure Station as follows:—

LEAVE MONTREAL.

DAY EXPRESS running through to Boston at 8.30 a.m., with Parlor Car.
LOCAL TRAINS to Knowlton and All Way Stations this side at 5.00 p.m., on Saturdays at 2.00 p.m., instead of 5.00 p.m., and arrive on Mondays at 8.25 a.m. instead of 9.15 a.m.
NIGHT EXPRESS, with Pullman Sleeper, through to Boston at 6.30 p.m., will stop only at Chambly, Canton, West Farnham, and Cowasville, between St. Lambert and Sutton Junction, except on Saturdays, when this train will stop at all stations.

ARRIVE AT MONTREAL.

NIGHT EXPRESS from Boston at 8.25 a.m.
LOCAL TRAINS from Knowlton and Way Stations at 9.15 a.m., on Mondays at 8.25 a.m., instead of 9.15 a.m.
DAY EXPRESS from Boston at 5.45 p.m.

Express Trains arriving at 8.25 a.m. will stop daily at Richelieu, Chambly, Canton and Chambly Basin.

The most comfortable and elaborate Sleeping Cars run on the night trains that enter Bonaventure Station.
ALL CARS AND TRAINS run between Bonaventure Station, Montreal, and Boston WITHOUT CHANGE. Baggage checked through to all principal points in NEW ENGLAND.
BAGGAGE PASSED BY THE CUSTOMS AT BONAVENTURE STATION, thus saving all trouble to Passengers at the Boundary Line.
For Tickets, apply at 27 St. James street, Windsor Hotel and Bonaventure Station.

BRADLEY BARLOW,
President and General Manager.

CASTOR FLUID (Registered.)

A delightfully refreshing preparation for the hair. Should be used daily. Keeps the scalp healthy, prevents dandruff, promotes the growth. A perfect hair dressing for the family. 25c per bottle.

HENRY R. GRAY, Chemist,
Sole Manufacturer,
144 St. Lawrence Main Street.

\$777 a year and expenses to agents. Outfit free. Address P. O. VICKERY, Augusta, Me.

BANK OF MONTREAL.

NOTICE is hereby given that a Dividend of Four per cent. and a Bonus of One per cent.

upon the paid-up Capital Stock of this Institution, have been declared for the current half-year and that the same will be payable at its Banking House, in this city, and at its Branches, on and after THURSDAY, the 1st day December next.

The Transfer Books will be closed from the 16th to the 30th of November next, both days inclusive.

By order of the Board,
Montreal, 21st October, 1881.

W. J. BUCHANAN,
General Manager.

CARDS, 10 Lily and Imported Glass, 10 Transparent, 20 Motto, Scroll & engraved, (in colors) in case, & 1 Love Letter, name on all 15c. West & Co. Westville, Ct.

"NIL DESPERANDUM."
GRAY'S SPECIFIC MEDICINE

TRADE MARK. The Great English Remedy, An unfailing cure for Neural Weakness, Spermatorrhoea, Impotency, and all Diseases that follow as a consequence of Self Abuse; as loss of Memory, Universal Lassitude, Before Taking Pain in the Back, After Taking Dimness of Vision, Premature Old Age, and many other Diseases that lead to Insanity or Consumption and a Premature Grave. Full particulars in our pamphlet, which we desire to send free by mail to every one. The Specific Medicine is sold by all druggists at \$1 per package or six packages for \$5, or will be sent free by mail on receipt of the money by addressing

THE GRAY MEDICINE CO.,
Toronto, Ont., Canada.

THE QUEEN'S LAUNDRY BAR.

Ask for it, and take no other. BEWARE OF IMITATIONS. Trade Mark. Made by THE ALBERT TOILET SOAP CO.