

meeting of the St. Boniface town council last week the proposal to macadamize and otherwise improve Provencher avenue was defeated. It was decided to submit a by law to the ratepayers on August 14th to provide \$15,000 for a civic lighting system and \$100,000 for a system of waterworks.

**TORONTO, ONT.**—Plans of sewage pumping station to be constructed at Sault Ste. Marie, Ont., are on view at the office of Willis Chipman, chief engineer, 103 Bay street, this city.—It is understood that W. A. Murray & Co. intend making extensive alterations to their store front on King street.—It is reported that a new branch of the Bank of Toronto will be erected on the south-west corner of Queen street and Spadina avenue.—The Canadian Pacific Railway will lay 30-pound steel rails on 38 miles of the Ontario and Quebec division between Toronto and Smith's Falls.—The Council has given notice of its intention to construct the following works: As-

phalt pavements on Kensington avenue, from Patrick to Baldwin street, cost \$5,625; on Bedford road, from Bernard avenue to Davenport road, cost \$2,665; on MacDonnell avenue, from Queen street to a point 2,836 feet north, cost \$20,535; brick pavement on Givens street, from College to Bloor street, cost \$20,250; macadam roadway on Noble street, from Brock avenue to a point 298 feet east, cost \$955; cement concrete sidewalks on Dovercourt road, east side, from Queen to Dundas street, cost \$1,587; on Queen street, south side, from Dunn to Gwynn avenue, cost \$3,115; on Peter street, west side, from King to Queen street, cost \$1,565; on Bellwoods avenue, east side, from Queen to Arthur street, cost \$1,347; and a number of other streets.—Tenders are invited by

the Board of Control up to noon of Wednesday, 30th inst., for draining the north wall of the King street subway.—Tenders are invited in this issue for repairs, alterations and improvements to be made to the public schools during the summer vacation.—It has not yet been decided what class of pavement will be laid on Simcoe street.—Trinity College will shortly present a petition for a concrete sidewalk on Queen street in front of the College.—J. Wilson Gray, architect, has prepared plans for new buildings for St. Andrew's College to be erected north of the lacrosse grounds in Rosedale. It is expected that construction will be commenced this season.—The Macpherson Estate will erect a number of houses immediately north of St. Andrew's College.

(Continued on page 6.)

## DEBENTURES

Municipalities contemplating the issue of Debentures will find it to their advantage to communicate with

**G. A. STIMSON & CO.**  
Investment Dealers

21 and 26 King St. W. - TORONTO

## THE CRSCOE NT CONCRETE PAVING CO.

Contractors for all branches of

### CONCRETE WORK

77 Victoria Street, TORONTO

Yards: 133-135 Wellington St. West.  
Phone Main 1649.

## Municipal Supplies...

Rock Crushers with Elevators and Revolving Screens, Road Graders, Mud Scrapers, Watering Carts, Steam Road Rollers, Fire Engines, Etc.

**T. A. Morrison & Co.,** 204 St. James St., Montreal.

### Paving Granite

Granite Sets for Street Paving. — CURBING cut to any shape ordered. — Fine Rich Colors for Building and Monumental Purposes.

Quarries, St. Philippe d'Argenteuil, P. Q.

Address all communications to

**JOS. BRUNET - COTE DES NEIGES, MONTREAL**

## JOSSON CEMENT .. Manufactured at.. NIEL ON RUPELL

Is the Highest Grade Artificial Portland Cement and the Best for High Class Work. Has been used largely for Government and Municipal Works.  
TO BE HAD FROM ALL CANADIAN DEALERS

**C. I. de Sola,** Manager in Canada .. 180 St. James Street, MONTREAL

## Dominion Bridge Co., Ltd.

P. O. Address, MONTREAL, P. Q.  
Works at LACHINE LOCKS, P. Q.

## STEEL BRIDGES

For Railways and Highways  
Piers, Trestles, Water Towers  
Tanks, Buildings, Roofs, Girders,  
Beams and Columns

Toronto Agent: **GEO. E. EVANS,**  
31 Canada Life Bldg., TORONTO, ONT

## THE CANADIAN SEWER PIPE CO.

MANUFACTURERS OF ..



ST. JOHNS, HAMILTON, P. Q. ONT

## — FOR — Sewers

CULVERTS

AND

WATER PIPES.

## INVERTS

for Brick Sewers

Write for Discount.  
TORONTO ONT.

## The Canadian Bridge Co., Limited

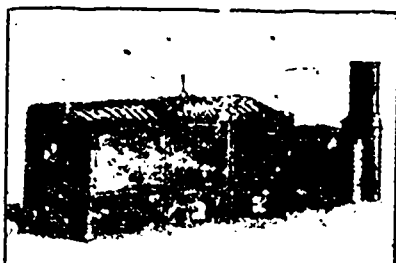
WALKERVILLE, ONT.

MANUFACTURERS OF

## RAILWAY AND HIGHWAY BRIDGES

Locomotive Turn Tables.  
Roofs, Steel Buildings and  
Structural Iron Work of all descriptions.

## PERFECTION STEEL-GLAD AND BRICK SET INCINERATORS



MANUFACTURED BY

**Toronto Furnance & Crematory Co., LIMITED**

14 and 16 Queen St. East, TORONTO, CANADA.

Experts in sanitary disposal of dangerous wastes,

**Garbage, Refuse, Night Soil, Dead Animals,**

For Cities, Towns, Hospitals, Hotels, Abattoirs, etc.

The plants embody the newest features of modern practice and are constructed to meet the requirements of the smallest towns and the largest cities, capacities ranging from 4 to 100 tons daily. Correspondence invited.