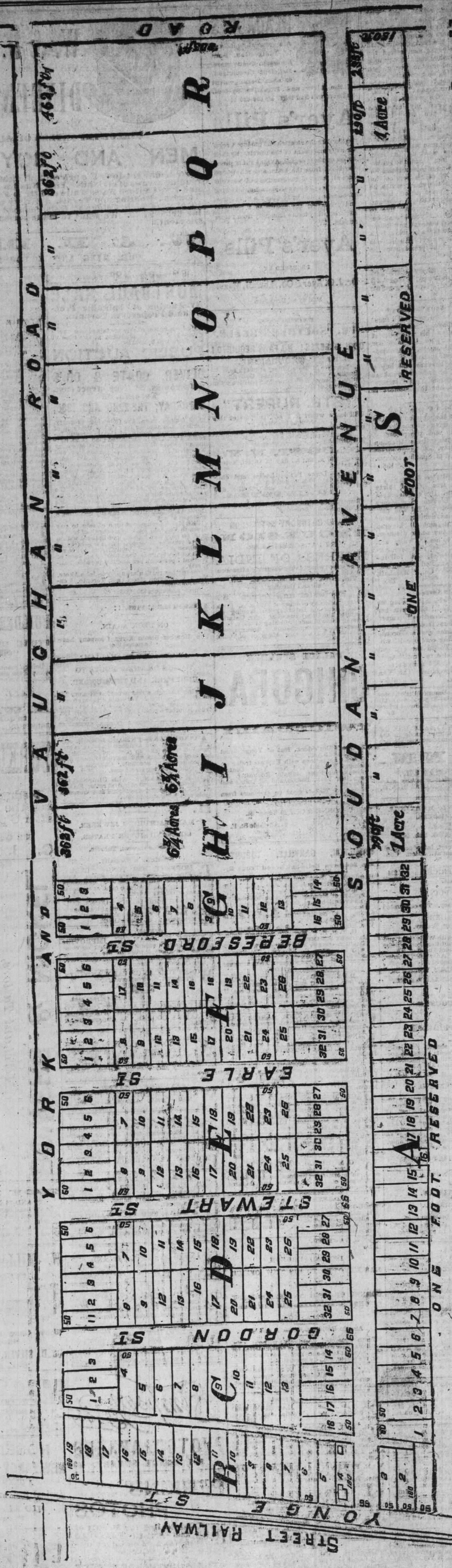


# YONGE STREET PARK ESTATE.



This most Picturesque Estate is situated within a mile of the city limits, it rises gradually to a beautiful eminence from which you command a most extensive view of the surrounding country in the immediate neighborhood. There are already

## SEVERAL BEAUTIFUL VILLA RESIDENCES,

owned and occupied by wealthy merchants of the City of Toronto, and it has now one great advantage, that it is connected with the city by the street cars which run past the estate, that the

## MERCHANT, TRADESMAN AND MECHANIC,

after the labors of the day can take the Yonge street cars and be set down at his own door, thus saving the expense of keeping a horse to come in and out of town; it is also within an easy walking distance of NORTH TORONTO STATION, where you can ship goods and go to any part of the world. The estate is so laid out to

## SUIT EVERY CLASS OF PURCHASER,

from a 50 foot lot to one or 6 acres. The soil is one of the finest for miles round for gardening purposes.

## TERMS ARE EASY--TAXES MODERATE.

Call or send post card for plan and prices and terms, etc., to

GEORGE CLARKE, 47 YONGE STREET ARCADE.

MISES.  
MENT.  
NS IN  
Toronto.  
IN BOX CARS.  
COAL  
PROMPTLY.  
& CO.  
T BOOT  
City  
3, AT  
DELER'S  
Street West.  
Canadian Pacific  
SHIP LINE  
for  
r, Manitoba and the  
North-West.  
without Clyde-built steamships  
ALBERTA AND ALGOMA  
leave Owen Sound at 4 p.m.  
ys, Thursdays and  
Saturdays.  
the Canadian Pacific Fast Ex-  
press, leaving Toronto at  
will run  
TO PORT ARTHUR,  
close connections with the  
Canadian Pacific  
and all points in the  
North-West.  
for Winnipeg can be secured  
seamless.  
Lowest Rates. Quickest  
of Lading. No Over-  
No Overcharges by this line.  
his route and trade, and are the  
most and best equipped and fur-  
nished, and are lighted by elec-  
tricity, and all information can  
be had by writing to the Canadian Pacific  
Railway Company, Montreal.  
W. G. VAN HORN,  
President C. P. R., Montreal.  
HENRY HEAVY,  
General Manager, Toronto.

WANTS MONEY.  
GO PRICES.  
ing Factory,  
7 Queen West. 513

GREAT RUSH  
LL CONTINUES  
OUR BEAUTIFUL  
& Parisian Bangs,  
TER WAVES, ETC.  
OUR BANGS  
Cannot be equalled.  
Our Bangs & Waves  
are a part of anything  
in the Hair Goods line  
ever placed before the  
public.  
Thousands are being  
worn throughout the  
Dominion and give the  
greatest satisfaction.

UR BANGS  
of the very best curled hair and  
are no dressing.  
GREY AND PARISIAN BANGS  
AND WATER WAVES  
are complete and perfect Head-dress  
to Ladies, and should not be  
missed. CALL AND SEE THEM.

ORENWEND'S  
PARISIAN HAIR WORKS  
YONGE ST.  
H. STONE,  
THE UNDERTAKER,  
187 STREET,  
Doors North of Queen street.

Private  
Medical Dispensary,  
ESTABLISHED 1860,  
187 Bond St., Toronto, Ont.