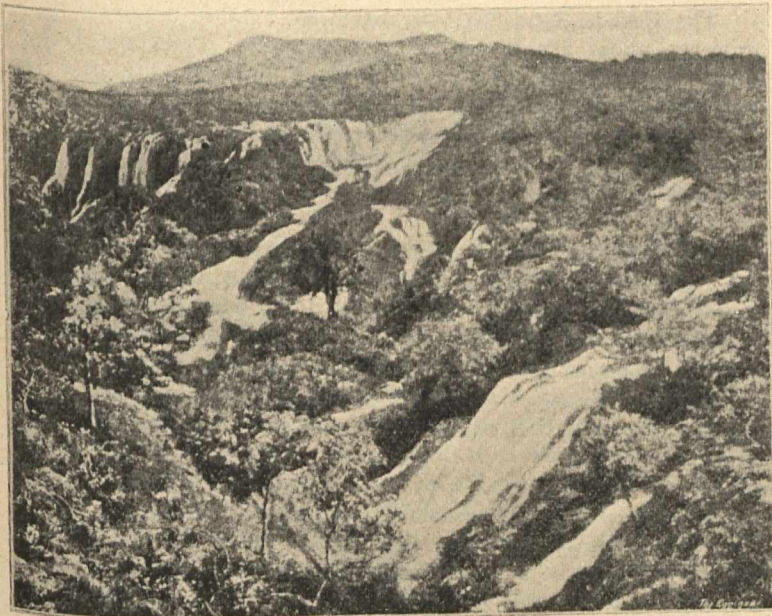


American Railway Engineering and Maintenance of Way Association, Bulletin No. 30.

Fire Tests with Roofs. Fire Tests with Doors. Fire Tests with Automatic Fire Alarms. Testing Arrangements of the Committee. These are a continuation of the series of publications of the British Fire Prevention Committee, and contain much useful information relating to fire prevention.

CAUVERY FALLS POWER PLANT.

The Canadian Engineer has referred already to the Cauvery Falls power plant in India, one of the greatest long distance plants in the world, of special interest to Canadians because Capt. A. J. de Lotbiniere, R.E., son of the Lieut.-Governor of British Columbia, and a graduate of the Military College at Kingston, was the chief engineer. The plant was constructed to furnish 6,000-h.p. to the mines of the Kolar gold field, 90 miles distant, and the electrical apparatus was supplied from America. Great difficulty was experienced in obtaining labor, the natives believing that the god of the falls was very irate at any of the water being diverted, and as malarial fever and cholera broke out, this idea was strengthened and the people fled in all directions. It was only when assured that a new god, imported in the



shape of the machinery, was much stronger than the old one, who guarded the falls, that they were willing to return and go on with the work. We present an illustration of the Cauvery Falls, the source of this great power development.

The Grand Trunk is to build a handsome new station at Brantford. A new station has also been built at Fergus.

It is now proposed to tunnel the Strait of Canso instead of bridging it. P. S. Archibald, engineer of the proposed bridge, is said to have expressed the opinion that a tunnel would be cheaper and less costly to maintain. Meantime the ferry transfer Scotia is doing good work, having proved herself a splendid ice breaker.

—The Department of Militia propose to create two corps of engineers, one to be raised in the district of Montreal, and the other in the Maritime Provinces. The Montreal corps has already been authorized, and Stuart Howard, C.E., assistant city surveyor, who is well qualified, both by his experience in civil engineering and his knowledge of military organization, has been appointed to command. There will be no difficulty in keeping up the detachment, as nearly the full force of 106 has already volunteered to serve under Mr. Howard, all of them being handy men, who understand railway and construction work. The Government will take over the club house of the Athletic Association of Point St. Charles for the new corps.

Industrial Notes.

The Lake of the Woods Milling Company will build a new mill at Keewatin.

Sutcliffe & Muir, of Morris, Man., will build a 300 barrel flour mill at Moosomin.

The old beet sugar factory, at Farnham, Que., is to be utilized for furniture making.

The capital of the Dominion Cartridge Co. has been increased from \$250,000 to \$1,000,000.

Shaw, Casse's & Co., of Montreal, are trying to arrange to build a large steam tannery at Windsor, N.S.

The name of the Pressed Steel Car and Wheel Company has been changed to the Imperial Steel and Wire Co.

Geo. Reid's flour mill at Dunnville is to be rebuilt, with a daily capacity of 50 barrels. He will also put in a buckwheat mill.

The Port Huron Engine and Thresher Co., and the Buffalo Tool & Machine Co. have been licensed to do business in Ontario.

The Sussex Foundry and Machine Company have amalgamated with the Sussex wood working and electric light company.

The Pratt & Letchworth Co., makers of malleable iron goods, celebrated the enlargement of their works at Brantford by giving a banquet.

The Canadian Elevator Co. will build 70 elevators on the line of the Canadian Northern Railway and establish 20 lumber yards in the Territories.

The Owen Sound Portland Cement Co. has increased its capital from \$200,000 to \$500,000, and that of the Gold Medal Furniture Co. from \$100,000 to \$250,000.

Berlin, Ont., has a prospect of getting a factory for the manufacture of condensed milk. The pulp from the sugar factory is very suitable for feeding cows.

The London, Ont., Builders' Supply Co. is building a brick-manufacturing plant, at a cost of \$30,000. The project is the result of a combination among brick and tile manufacturers.

The Canada Furniture Manufacturers Co. is building at Waterloo, Ont., an up to date mattress factory. It has opened new sample and office rooms at Toronto. The company now operates 21 factories, each of which is devoted to some special line.

St. Hyacinthe, Que., has passed the by-law to grant a bonus and other assistance to Ames, Holden & Co. for the establishment of a shoe factory for making staple goods. The factory in Montreal will be operated on special lines and higher grades of footwear.

Popular Mechanics declares the new German process of making brick in a few hours from sand and lime to be a failure. There have been no less than 80 factories erected in Germany to carry out the process. The plant is expensive, and the bricks are said to possess no advantages over the old time clay brick.

Two men were injured, one badly, and the foundry of the Canadian Pacific Railway at Hochelaga, was damaged to the extent of \$4,000, by a gas explosion when the furnaces were being emptied after casting. The cause of the accident is laid to gas that had accumulated underneath the furnaces, and exploded as soon as the coke and hot metal came in contact with it.

The Toronto Forge and Bolt Co. has been given an order for enough track bolts for 65 miles of the Temiskaming Railway, and the Pillow & Hersey Mfg. Co., Montreal, an order for spikes for the same distance. The contractor has been instructed to purchase 57 sixty ton flat cars, with automatic couplers and Westinghouse air brakes, to be used in construction. They will afterwards be taken over by the commission at a valuation.