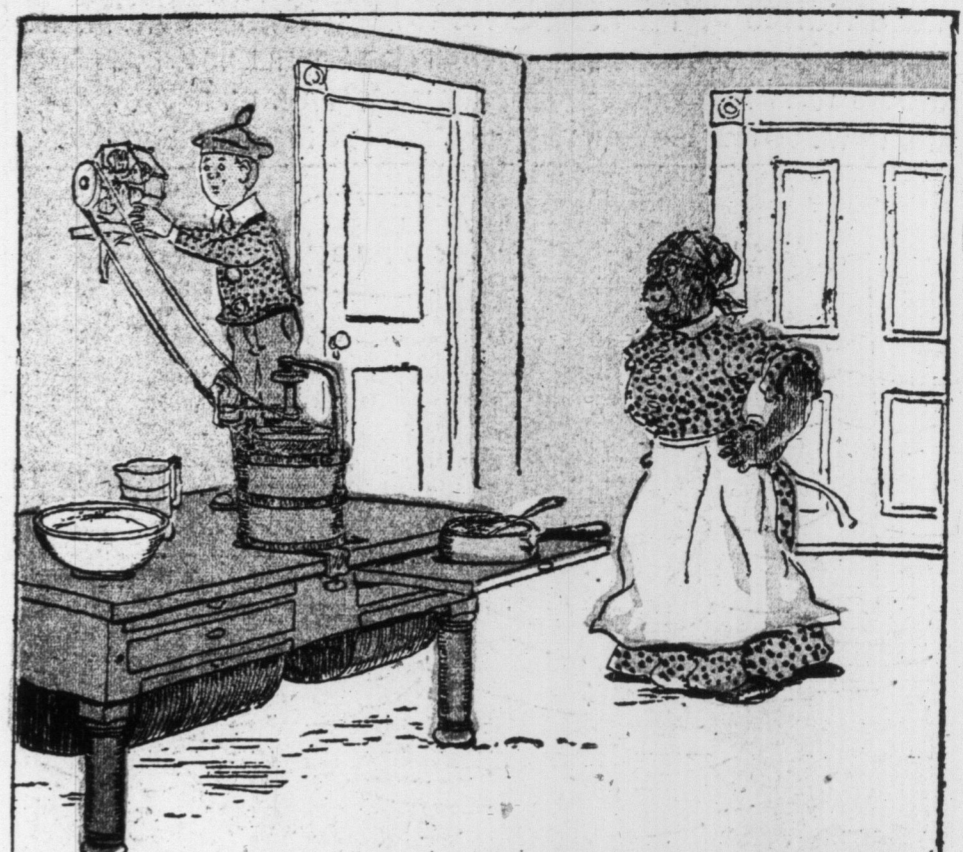
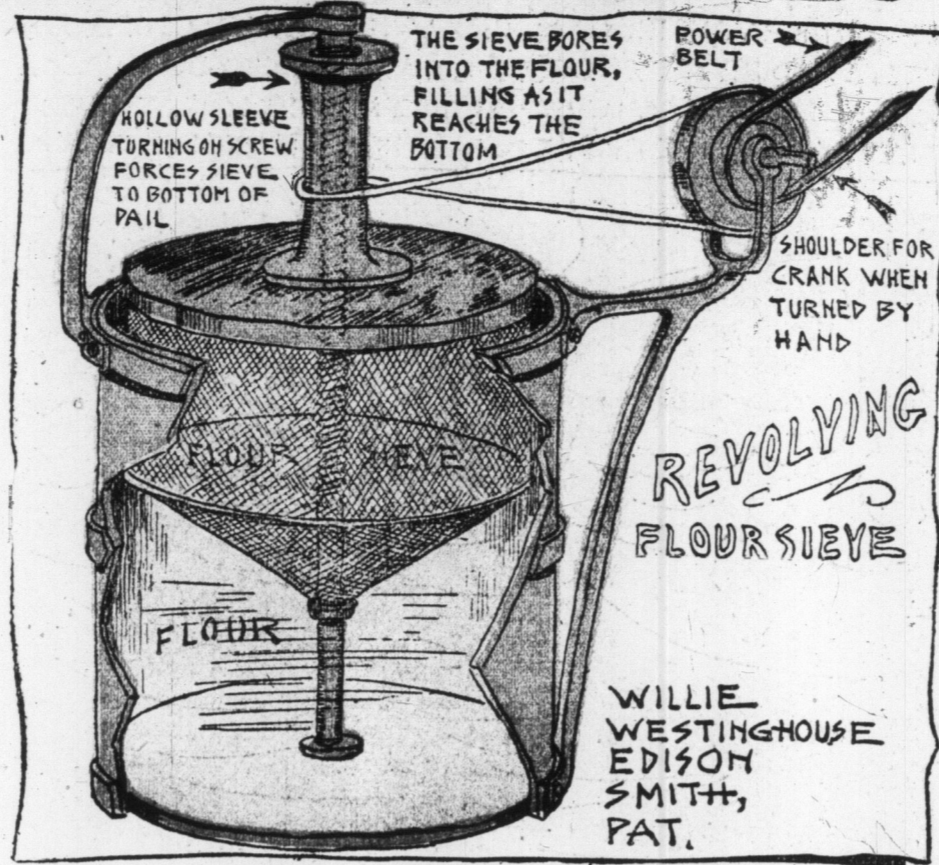
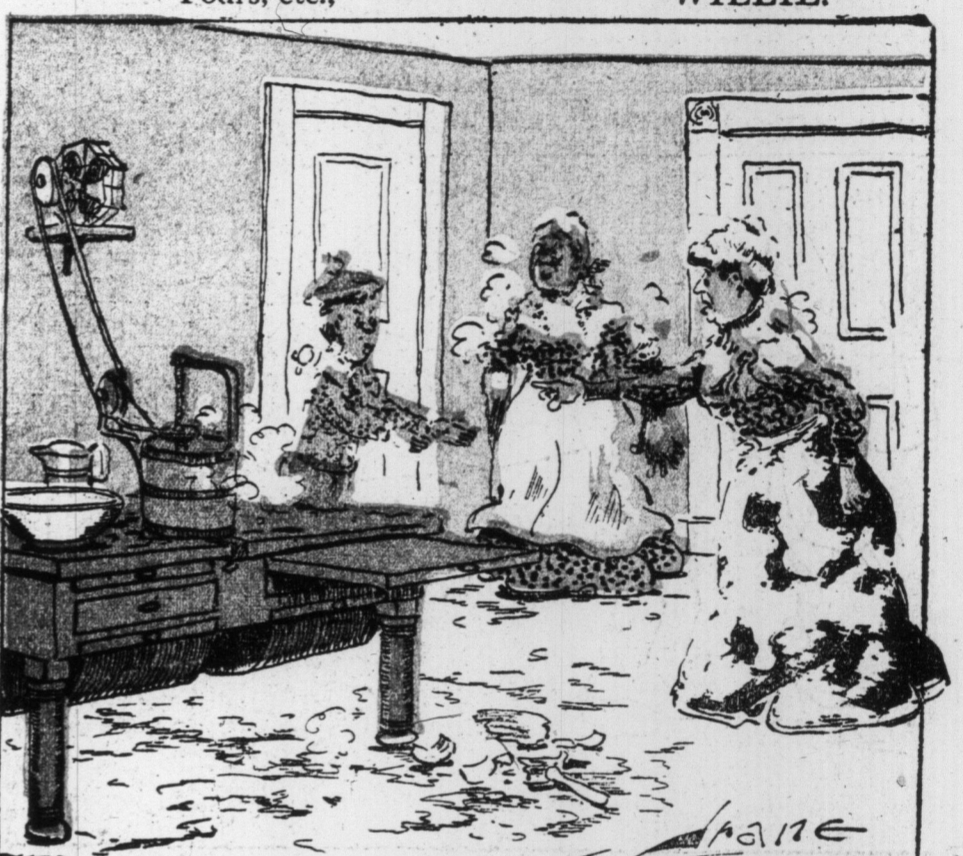
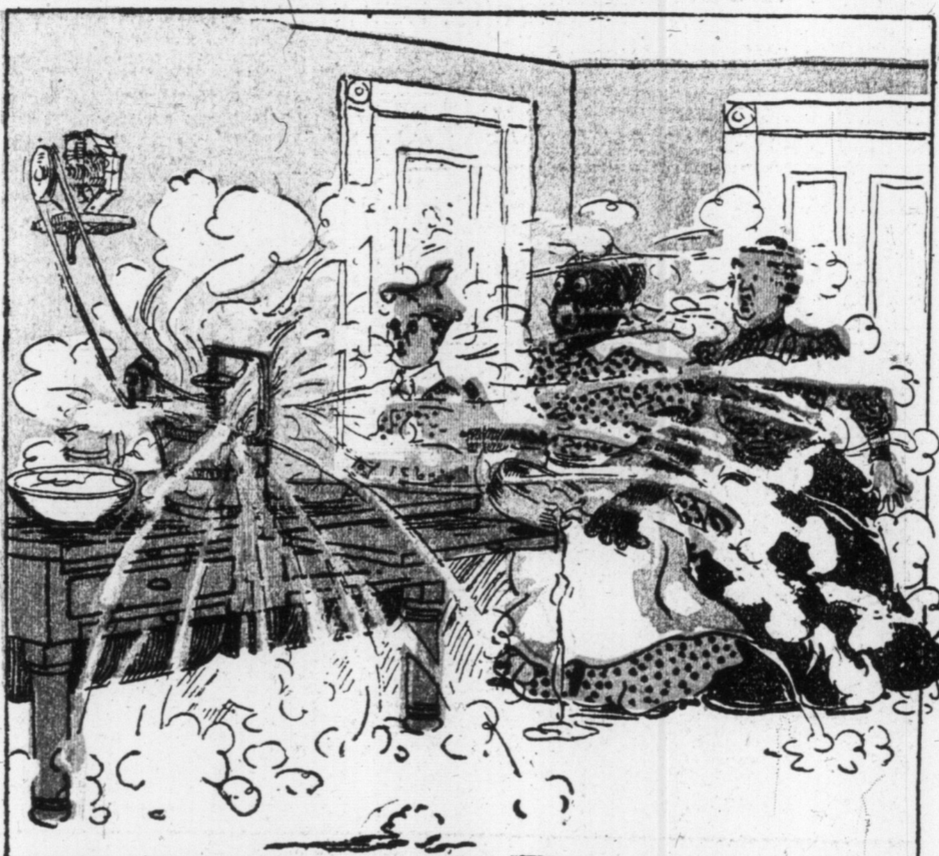


WILLIE'S NEW FLOUR SIFTER GETS HIM INTO A PECK OF TROUBLE

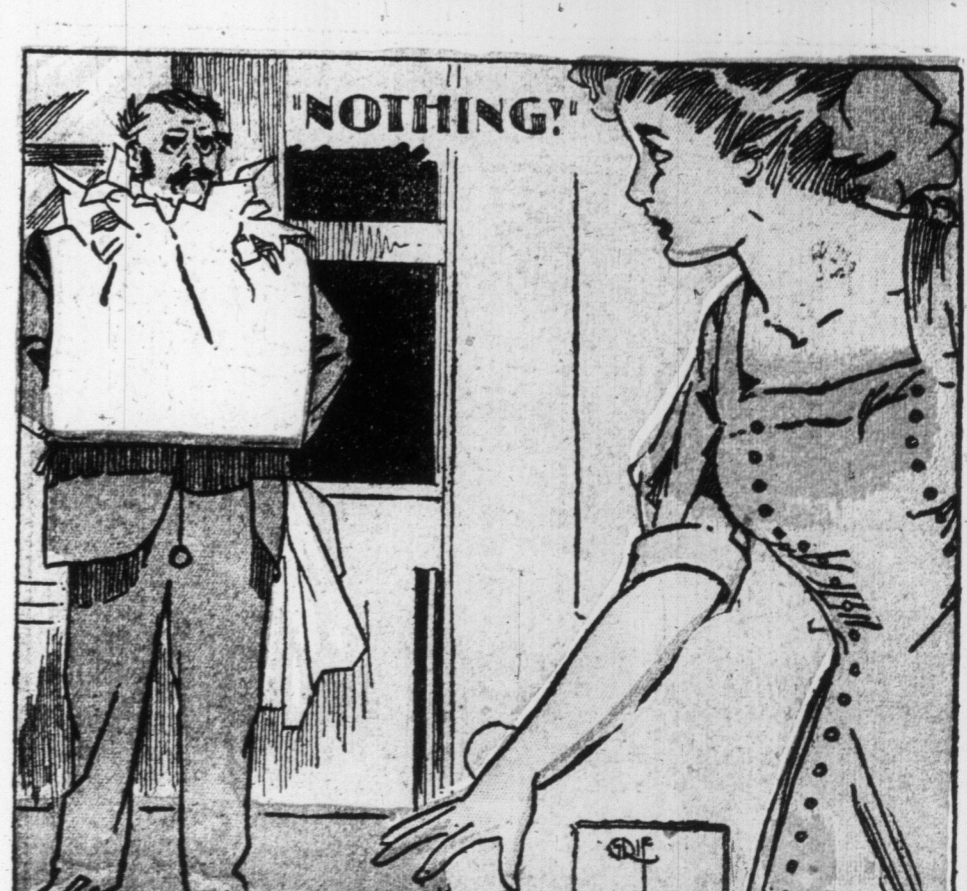
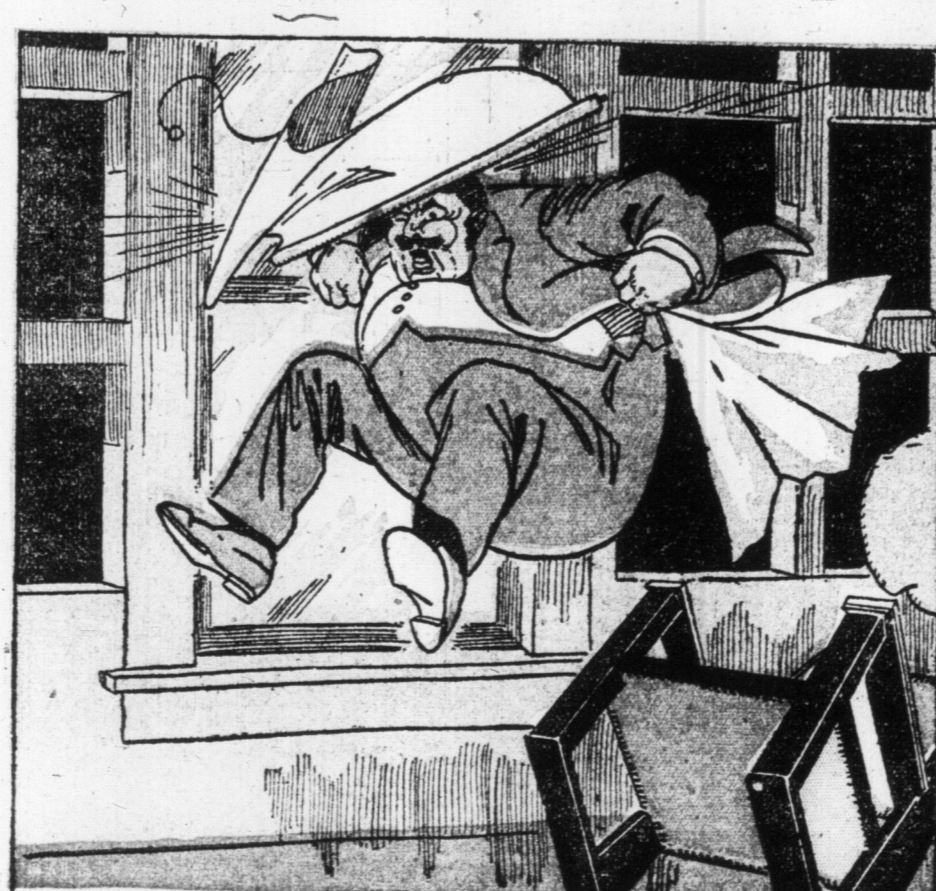


DEAR TOMMY: Our cook makes so much fuss about sifting the flour when making pastry that I made a flour-sifter like this. and the pail too large, and the flour was whirled all over us!

It was a good scheme—only I got the space between the sieve and the pail too large, and the flour was whirled all over us!
Yours, etc., WILLIE.



IT'S ONLY ETHELINDA—SHE MERELY ADJUSTS THE WINDOW SHADE



FOR Building 24 ft. by 8 ft. first-class 8000 per in build rent. 26 vi

PR

CHA TO

Troub - ject - Indi as t

NEW bune's L The ce has sent is a sign lations o probable tinuance until the financie secrets ary spe press de There has been suprema close de with the cide on taxation. Equall casts of legislati four Un preparat grievanc hold up enact T there be Ways as soon as lords sh eral mear torate of be govern ment. Until a rural eq the con exhausti Radicali tween th papers a there: w until aft

The bu is likely revenue trade, at ceased of the ex provide 000. He cesses, a tional ex safety at keeping J

Out

The bu

A bill fensive duced of 1911 w It is dim Asquith uncontent the bill Tuesday It will Irish Un Protestar Lord Ros working he has a the house John R returned an dinne the Irish house to Tuesday. Despite bill mere the langu ation, any condition throne, th Tuesday. testant in form of p pected fr men in th on the e of lords, v claration trine of t Mr. Asqu contentio

Budg

The bu tentions a Mr. Lloy exchequer increased to year. Th heated op bers, aid members, tionalists reducing would be precipitat The risk against t get is no This is of erment Jority mu Heves tha power to Member ference o last so lo the lords. The leade been wide ment of a the King' that the age is on unable-to ment sup tence of t new ones "abolishin

Re

The Lib likes the Within in four, a r ever attal