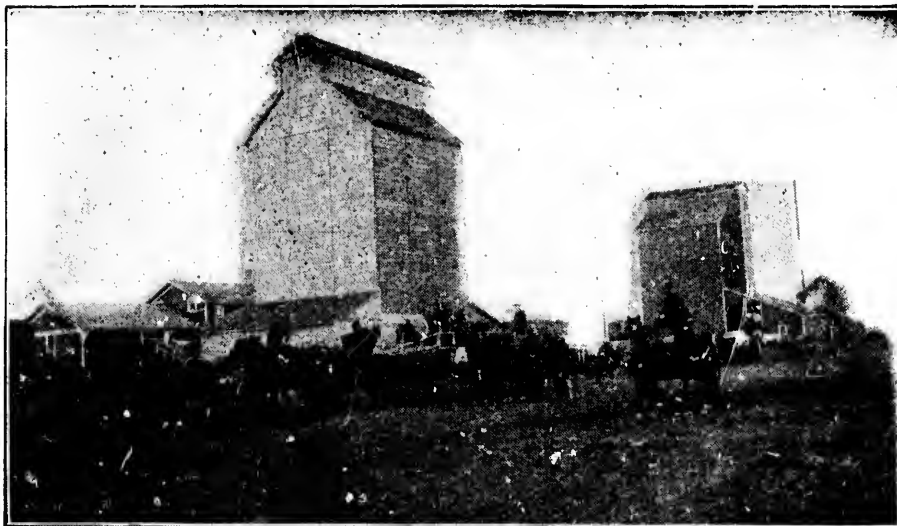


Is the other country as good, and stores, mills, elevators, and such like to be found ?

Yes. There are first class places to settle out of Manitoba. Round about Edmonton, and down the line half-way to Calgary is land that for mixed wood, water and prairie, cannot be excelled. Eastern Assiniboia, for some distance west of Manitoba, has first



Prairie Elevators.

class land for mixed farming. Round about Prince Albert and Battleford, on the Saskatchewan, with rail and, at times, river communication with Winnipeg, is some of the prettiest farming land in the country. Within a drive from the railway station are free tracts open for bona fide settlers, and you can choose which