

LONDON, ONT.—Moore & Henry, architects, have let contracts as follows for the electric street railway power house: masonry and brickwork, Ed. Martyn; structural iron work, Hamilton Bridge Works.

TORONTO, ONT.—The contract for the erection of the addition to the Lozer bicycle factory at Toronto Junction has been let to A. J. Brown, of this city, for \$10,500. The building will be of brick, three-stories, 50 x 150 feet.

MONTREAL, QUE.—A. J. Cooke, architect, has awarded contracts for a cottage at Chateaugay, P. Q., for W. G. Ross as follows: stone and brick, Jos. Brunet; carpenter and joiners work, M. Desautels; painting and glazing, M. Desautels.

WINNIPEG, MAN.—The tenders received by the Board of Works for a steam road roller were as follows: R. E. H. Gardner-Buckner, representing Aveling & Porter, of Rochester, Kent, Eng., single roller for \$3,450, double for \$3,900; Kelly Bros., of the Enterprise Manufacturing Co., Columbia, Ohio, single roller, \$3,785; Waterous Engine Co., Buffalo pit steam roller, \$4,390. The tender of Mr. Buchner has been accepted.

CORNWALL, ONT.—Tenders for building a granolithic sidewalk on Pitt street were received by the Council as follows: G. W. Read, Montreal, 34 cents per square foot on the Council's specification or 26 cents per square foot on his own specifications; John McBean, Toronto, 26 cents; Clark & Connolly, Toronto, 24½ cents; W. J. Wood, Cornwall, 25½ cents. The tender of Mr. McBean has been accepted.

NEW COMPANIES.

ST. FAUSTIEN, QUE.—Northern Lumber Co., applying for incorporation; capital \$20,000; applicants, Jos. Delorimier, E. H. Godin and others.

WOODSTOCK, ONT.—The Woodstock Wagon and Manufacturing Co., seeking incorporation; capital \$25,000.

BROCKVILLE, ONT.—Brockville Electric Railway Co., seeking incorporation; capital \$200,000; promoters, W. H. Comstock, C. S. Cossitt, D. S. Booth, O. K. Fraser and others.

BELLEVILLE, ONT.—Walker Foundry Co., incorporated; capital stock \$20,000; to carry on the business of iron and brass founders, machinists, boiler makers, bridge builders, manufacturers of agricultural implements, etc.

WALLACEBURG, ONT.—Cashmer Mfg. Co., applying for incorporation; capital stock \$20,000; to manufacture staves, hoops and lumber.

TORONTO, ONT.—Canonto Mica and Mineral Mining Co., applying for incorporation; capital stock \$22,000; to mine, cut and dress mica, etc.—Standard Woodenware Co., Toronto, applying for incorporation; capital stock \$25,000; to manufacture woodenware, furniture, interior art woodwork, architectural wood carving, etc.

ST. CATHARINES, ONT.—Power Rope & Belting Co., seeking incorporation; capital \$20,000.

R. J. Doyle has established a factory at Shallow Lake, Ont., for the purpose of making ornamental bricks.

MERRIFIELD & WESTCOTT . . .
ENGINEERS and CONTRACTORS
—FOR—

WATER WORKS and GAS PLANTS
269 Front Street East TORONTO.

SECTIONAL PIPE AND BOILER COVERINGS

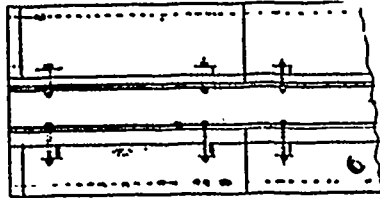
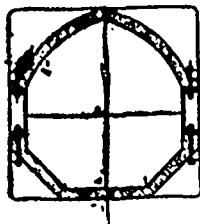
Mineral Wool • Asbestos Goods of every description.

Eureka Mineral Wool & Asbestos Co.

124 BAY STREET - TORONTO.

HERCULES INDESTRUCTIBLE CULVERT

20 per cent. more water-way than circular form.



Unrivalled for Strength • Durability Cheapness.

Made in sizes of 20 in., 24 in., 30 in., 3 ft. 4 in. and 5 ft.

Write for prices to
EDWIN W. SMITH
344 Garth St., Hamilton, Ont.

ARTIFICIAL STONE PAVEMENTS.



SIDEWALKS
A
SPECIALTY.



CORPORATIONS

Will do well to consider our work and prices before letting contracts.

THE SILICA BARYTIC STONE COMPANY OF ONTARIO, LTD.

Head Office: Ingersoll, Ont.

WALTER MILLS, General Manager

Paving Granite

Granite Sets for Street Paving.

CURBING cut to any shape ordered.

Quarries, St. Philippe d'Argenteuil, P. Q.

Address all communications to

JOS. BRUNET - COTE DES NEIGES, MONTREAL

JOHN GALT, C.E. & M.E.

(Member Can. Soc. C. E.)

Consulting Engineer and Expert

Specialties:

Water Supply and Sewerage, etc.

Electric Power, Lighting, Railways, etc.

Offices:

Canada Life Building - TORONTO

CHANGE OF ADDRESS

ALAN MACDOUGALL

M. CAN. SOC. C. E. M. INST. C. E.

CIVIL AND SANITARY ENGINEER

ABERDEEN CHAMBERS,

85 East Adelaide St. - TORONTO

New Telephone Number, 1252.

WILLIS CHIPMAN, B.A. Sc.

M. Can. Soc. C. E.; M. Am. Soc. C. E.;

M. Am. W. W. Ass'n.

CIVIL AND SANITARY ENGINEER

Water Works - Sewerage

Sewage Disposal

103 BAY STREET - TORONTO.

J. McDOUGALL, C. E.,

ENGINEER OF THE COUNTY OF YORK

GENERAL MUNICIPAL ENGINEER

Consulting Engineer for Municipalities in regard to Electric Railway and other Franchises.

Specialties: Bridges, Foundations, Electric Railways, and Roads. Surveys made; Plans, Specifications and Agreements prepared, and work superintended.

COURT HOUSE, - TORONTO.

GEO. WHITE - FRASER

C. E., D. T. S., A. AM. INST. ELEC. ENG.

CONSULTING

ELECTRICAL ENGINEER

Electric Railways and Electric Light.

SPECIALTY: Specification and Superintendence of

MUNICIPAL PLANTS.

18 Imperial Loan Building - TORONTO

E. GARL BREITHAUP

CONSULTING

Electrical Engineer

ASSOC. MEM. AM. INST. E. E.

Electric Lighting and Railway Work • **BERLIN, ONT.**

LAW BROS. & Co.

FOUNDERS AND MACHINISTS

OTTAWA, ONT.

Hydrants

Valves

Waterworks Supplies

Specials



Also CASTINGS of every description.

Send for a copy of the second edition of the CANADIAN CONTRACTOR'S HAND-BOOK. Price, \$1.50; to subscribers, \$1.