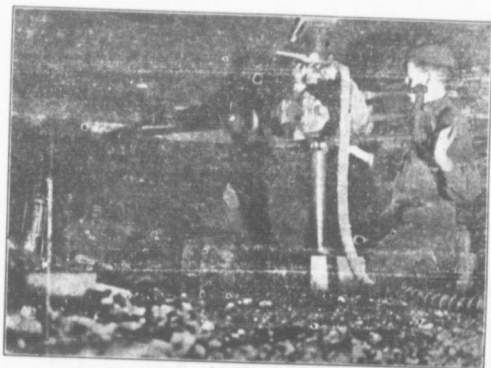


The "HARDY PUNCHER"



RADIAL Coal Cutter.

(1911 Model)

Completely eclipses all imitations.

It has attained a speed of 180 square feet per hour
- 15 feet wide x 6 feet deep in 30 minutes

**THIS MACHINE HAS MINED—
—AS MANY AS SIX ROOMS IN A SHIFT**

For Mining in Flat or Pitching Veins, taking out
Dirt Bands, etc., it is without a rival.

It is unquestionably the most Durable, Reliable,
Fastest, and Handiest Radial Coal Cutter made.

THE HARDY PATENT PICK CO. LTD.
SHEFFIELD, England.

AGENTS = Thompson & Sutherland.

NORTH SYDNEY.