

RAILS FOR TRAMWAYS

NEW AND SECOND-HAND STEEL AND iron rails for tramways and logging lines, from 12 lbs. per yard and upwards; estimates given for complete outfit.

JOHN J. GARTSHORE,
49 Front St. West, Toronto.

KEEP YOUR EYES OPEN FOR
H.W. PETRIES BIG CATALOGUE
OF NEW & 2ND HAND MACHINERY
OFFICES & WORKS
ADJOINING NEW UNION STATION, TORONTO, CAN.



Solo Canadian Agents :—: Prices Reduced.
WATERLOO, BRANTFORD, CANADA.

ARE YOU LOOKING FOR A CHANGE IN LOCATION?

If you are not satisfied with your present site, or if you are not doing quite as well as you would like to, why not consider the advantages of a location on the Illinois Central R. R. or the Yazoo & Mississippi Valley R. R.? These roads run through South Dakota, Minnesota, Iowa, Wisconsin, Illinois, Indiana, Kentucky, Tennessee, Mississippi and Louisiana, and possess

FINE SITES FOR NEW MILLS
BEST OF FREIGHT FACILITIES

CLOSE PROXIMITY TO

COAL FIELDS AND DISTRIBUTING CENTERS

AND

INTELLIGENT HELP OF ALL KINDS
MANY KINDS OF RAW MATERIAL

For full information write to the undersigned for a copy of the pamphlet entitled

100 Cities **WANTING INDUSTRIES**
and Towns

This will give you the population, city and county debt, death rate, assessed valuation of property, tax rate, annual shipments, raw materials, industries desired, etc.

To sound industries, which will bear investigation, substantial inducements will be given by many of the places on the lines of the Illinois Central R. R. which is the only road under one management running through from the North-Western States to the Gulf of Mexico. GEO. C. POWER, Industrial Commissioner I.C.R.R. Co., 506 Central Station Chicago.

... THE ...

FLINT & PERE MARQUETTE RAILROAD

FROM

Port Huron and Detroit

Is the Short Line to

SAGINAW AND BAY CITY

(Centres of the vast lumber interests of Michigan)

MT. PLEASANT, CLARE, REED CITY

BALDWIN, LUDINGTON, MANISTEE

AND

MILWAUKEE, WIS.

The last-named place reached by the Company's line of steamships across Lake Michigan.

The line thus formed is a short and direct route from

MONTREAL TORONTO

and all Canadian Territory

To ST. PAUL, DULUTH and Pacific Coast Points.

This road traverses a section of Michigan with unrivalled advantages to settlers. Cheap lands, thriving villages and towns, well watered with streams in all directions: a market for every product of Forest and Field.

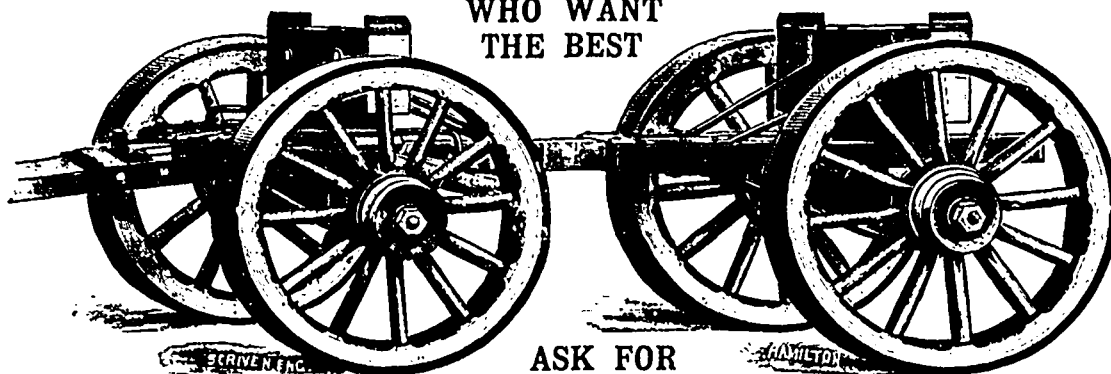
The policy of the "F. & P. M." is known to all travellers and settlers.

A. PATRIARCHE, Traffic Manager.

GENERAL OFFICES: SAGINAW, MICH.

LUMBERMEN AND MILL MEN!

WHO WANT
THE BEST

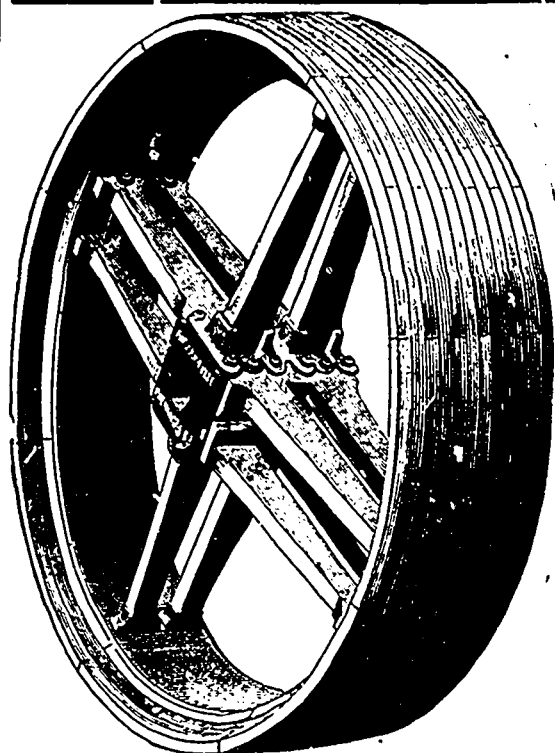


ASK FOR

Bain's Heavy Log Trucks

Furnished with Steel or Cast Skeins, 3½, 4, or 4½ arms. Any width tire. Are well built of thoroughly seasoned timber, heavily ironed and well finished. Built of any capacity required. Are STRONG, DURABLE, and LIGHT running. A trial order will be most convincing. Satisfaction guaranteed. Write us for further information. Address all orders or inquiries to

BAIN BROS. MFG. CO., Brantford, Ont.



DODGE PATENT WOOD SPLIT PULLEYS

FOR MODERN SAW-MILLS

See What the Big Fellows say

BUELL, HURDMAN & Co., Lumber Manufacturers,
HULL, P. Q., CANADA, November 29, 1894.

THE DODGE WOOD SPLIT PULLEY CO., TORONTO, ONT.

GENTLEMEN.—We take great pleasure in stating that we have a number of your wood split belt pulleys in our mills, and that they GIVE US EVERY SATISFACTION, and we CAN RECOMMEND THEM HEARTILY. Also, if any of our neighbors in this section would like to see them in operation, we should be PLEASED TO SHOW THEM AT ANY TIME.

Yours very truly, BUELL, HURDMAN & Co.

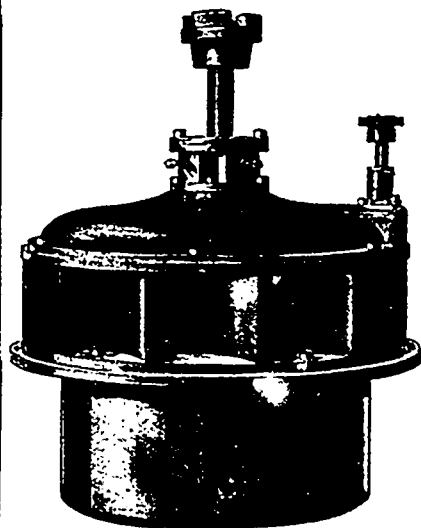
SEND FOR CATALOGUE AND DISCOUNTS.

Dodge Wood Split Pulley Co.
68 King St. West, Toronto.

ROBERT GRAHAM

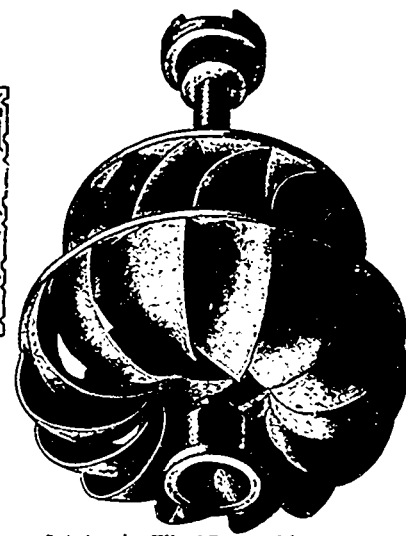
Iron Founder and Machinist
Water Wheels, Engines and Mill Machinery a Specialty. . . OTTAWA, ONT.

~THE~



STANDARD . . . WATER WHEEL

MADE in sizes from 6 inches to 84 inches diameter. Wheel one solid casting. 84 per cent. of power guaranteed. In five pieces. Includes whole of case, either register or cylinder gate. Water put on full gate or shut completely off with half turn of hand wheel, and as easily governed as any engine



Cut showing Wheel Removed from Case.

Write for Estimates, References and Catalogues of the STANDARD WATER WHEEL, also Milled and Rough Gearing of every size and description; Engines, Mill Machinery and Electric Power Plants; Latest Improved Band Saw Brazing Tables; Shears and Gummers; also Surface Grinder for Shingle Saws.