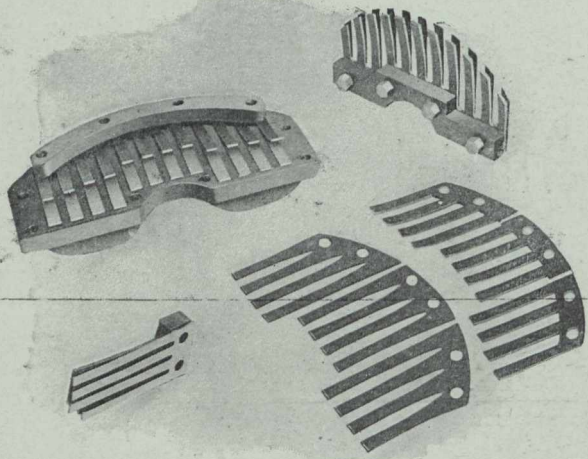


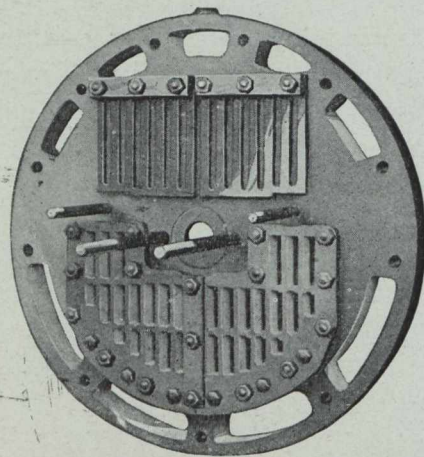
# A NEW COMPRESSOR VALVE



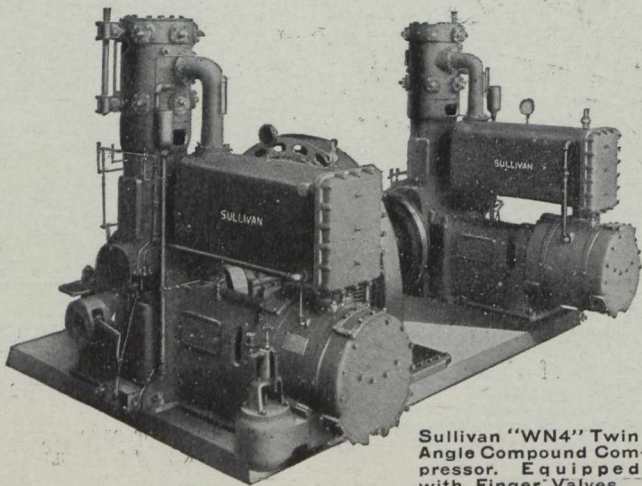
Sullivan Finger Valves. At top, Inlet Valve and Backing Plate; at foot, Discharge Valve.

Sullivan Angle Compound Air Compressors are now regularly equipped with the new SULLIVAN END-ROLLING FINGER VALVES—the latest and the most efficient development of the “plate” type of air valve for compressors. . . . SULLIVAN FINGER VALVES are remarkably free from breakage and wear, and reduce loss due to leakage and clearance to the minimum.

**SULLIVAN FINGER VALVES** consist of groups of narrow spring steel strips, held rigid at one end, and opening from the other for their entire length against a curved backing plate. The fingers roll outward, lifting at the free end first, to open and roll inward, the free end seating last, to close.



Sullivan Finger Valves in position in cylinder head-plates.



Sullivan "WN4" Twin Angle Compound Compressor. Equipped with Finger Valves.

This **END-ROLLING** movement is free from any bodily lift, avoids slapping or hammering, provides a free, direct port for the air and a seat that remains tight indefinitely. SULLIVAN FINGER VALVES on constant service compressors have not been touched for more than two years.

Ask for Bulletin 675C

## Sullivan Machinery Company

New York  
Boston  
Cobalt

Toronto  
Vancouver

122 SOUTH MICHIGAN AVE.

CHICAGO, ILL.

Nelson, B.C. Spokane  
Juneau London  
Sydney, Australia.