

CANADA'S GREATEST HOLSTEIN DISPERSAL

The Sale You Have Been Waiting For

Sixty Head

The Entire Herd of Dr. A. A. Farewell

—SELLING AT THE FARM—

Oshawa, Ont., Tuesday, June 11, 1918

THERE WILL BE INCLUDED IN THIS SALE—

More 30-lb. cows than ever sold before in one sale ring in Canada.

More sons and daughters of 30-lb. cows than ever sold before in one sale ring in Canada.

More sons and daughters of 30-lb. bulls than ever sold before in one sale ring in Canada.

More cows in calf to 30-lb. bulls than ever sold before in one sale ring in Canada.

More daughters and granddaughters of Pontiac Korndyke than ever sold before in one sale ring in Canada.

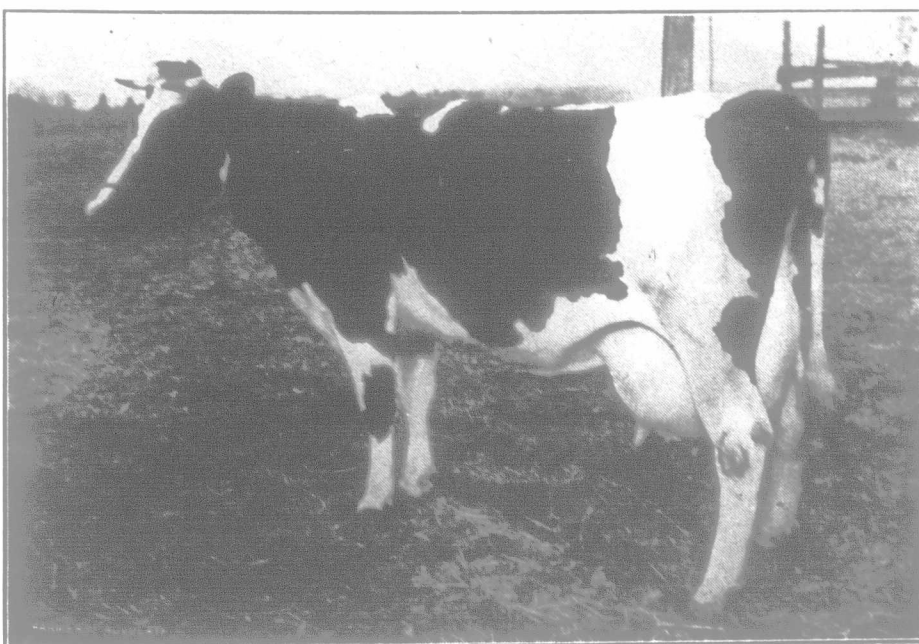
More grandsons and granddaughters of the great King Segis than ever sold before in one sale ring in Canada.

More official record cows with over a 4% test than ever sold before in one sale ring in Canada.

—AND—

More good individuals than ever sold before in one sale ring in Canada.

Come and Help Make it a Record Sale for Canada.



LELIA SEGIS WALKER

A 25.82-lb. 3-year-old daughter of King Segis Walker, showing type of the many daughters of this great sire that will be selling on June 11. All those of breeding age will be bred to the junior sire Pontiac Sir Korndyke Wayne. Both sires are also selling. Further announcements regarding them will interest.

REQUESTS FOR CATALOGUES SHOULD BE MADE AT ONCE TO—

DR. A. A. FAREWELL, OSHAWA, ONTARIO

Please Mention The Farmer's Advocate When Writing.

AUCTIONEERS:—KELLY AND HAEGAR. SALES MANAGER:—T. S. WOOD

Glue.

The strongest glue is made from the hides of oxen; that from the bones and sinews is weaker. Good glue should be hard in the cake, a dark color, almost transparent, free from black or cloudy spots, and with little or no smell. The best sorts are transparent, and a clear dark, amber color. Inferior kinds are sometimes contaminated with the lime used in removing the hair from the skins of which inferior kinds are made. When immersed in cold water the best glue swells considerably (the more it swells the better the glue), but it does not dissolve, and returns to its former size when dry. Inferior glue, made from bones, will dissolve almost entirely in cold water. Cohesion of glue is found to be such that if two pieces of board have been well-glued together, the wood yields in its substance before the glue. The strength of common glue for coarse work is increased by the addition of a little powdered chalk. Wood joined by glue requires from one to three days to be perfectly cemented, which is known by the hardness of the portion that remains on the outside of the joint. The following is a brief description of the process of glueing: have the glue as hot as possible the glue pot within easy reach, a basin of hot water, and a bit of sponge on the bench. The surfaces of the wood to be united should be clean, dry and true; cover quickly with hot glue both the surfaces to be united and rub them closely together, pressing out all the glue that can be got rid of. The motion of one piece on the other should be but slight; for instance, in a three-foot joint the top piece need never move more than an inch or two beyond the other piece which is fixed in the bench-screw; it will be soon felt that they are inclined to stick, then they must be brought at once to the position in which they are intended to remain, and firmly fixed with clamps. The strength of a glue joint largely depends upon the quantity; those joints hold

Manor Farm Holstein-Friesians

If it's a herd sire you want, write me. I have sons of both my senior and junior sires: King Segis Pontiac Posch and King Korndyke Sadie Keyes. All are from good record dams. I am also offering a limited number of young cows, bred to one of these two sires. Good individuals, with splendid official backing. Correspondence solicited, visitors welcome.

Gordon S. Gooderham Stations: Clarkson and Oakville Farm on Toronto and Hamilton Highway Clarkson, Ont.

"GOING TO SELL 'EM"

We have 5 thirteen-months bulls and are going to let them go. Three are by Pontiac Korndyke of Het Loo and brothers to Het Loo Pieterje (the world's champion heifer) while the other two are by King Segis Alcarra Spofford and Dutchland Colantha Sir Mona. Act quick if you want them. W. L. SHAW, (Electric cars from Toronto) Roycroft Farm, Newmarket, Ontario

SUMMERHILL HOLSTEINS

Present offering: Two bulls fit for service, both show animals, with excellent breeding, will be sold. Cheap if taken at once.

D. C. FLATT & SON R.R. 2, Hamilton, Ont.

DUMFRIES FARM HOLSTEINS

Present Offering—A few bull calves.

S. G. & ERLE KITCHEN ST. GEORGE, ONT.

RIDGEDALE STOCK FARM

offers for sale young bulls from high-testing dams, such as Lakeview Dutchland Wayne Rose, the highest producing cow of her age in the world. It will pay you to inspect these before buying. DR. F. A. HESLOP, Prop., R. R. No. 1, FREEMAN, ONTARIO. CHAS. HESLOP, Manager

SILVER STREAM HOLSTEINS

Present Offering—six extra well bred bull calves, sired by bulls with 34-lb. backing, and from tested dams, individually as good as their breeding. For fuller particulars and prices, write, or better come and see them. J. MOGK & SON, R. R. 1, TAVISTOCK, ONTARIO

Cloverlea Farm Holstein-Friesians

Offers for sale a choice young bull three months old, out of a 20.3-lb. dam. For price and extended pedigree write to

GRIESBACH BROS., COLLINGWOOD, ONTARIO

Here's a Top Notcher!

Sire, King Segis Walker; dam, 30-lb. daughter of Pontiac Korndyke, who herself has a 30-lb. daughter. He is a youngster, but he'll grow.

A. A. FAREWELL, Oshawa, Ont.

Special Offering of Yearling Holstein Bull for Quick Sale, \$125.

Ready for service; half white; sire Golsche Walker, whose 7 nearest dams average 30 lbs. butter in 7 days. Dam Johanna Glenice, 18.20 lbs. butter in 7 days at 3 years; she is granddaughter to Johanna Rue Lad 34989. THOS. L. LESLIE, ALLUVIALDALE FARM, NORVAL STATION, ONTARIO

best in which the wood is brought into the closest contact. The hotter the glue is when applied, the greater will be its power in holding surfaces together; therefore, in all large and long joints, glue should be applied as soon as possible after boiling. Glue will not set in a freezing temperature, the stiffening being prevented by great cold. Superfluous glue that protrudes from the joint may now be wiped off with the sponge when necessary, that is, when it is in an angle or an awkward place to get at afterwards; but as a general rule, and particularly in a long joint, it should be left on till cold, for it excludes the air, and goes a long way towards making a good, permanent joint.

To prepare glue for use, break it into one-half-inch cubes, cover it with cold water, and let it stand for from 1 to 24 hours, so that it may swell to many times its original bulk, which good glue will do, as already mentioned. The soaked pieces are melted without added water, over a slow fire, and kept simmering for about a quarter of an hour, with frequent stirring. In melting ordinary glue in the common form of glue pot, a double vessel, containing water, it is an excellent plan to add salt to the water in the outer vessel. It will not boil then until heated considerably above its ordinary boiling point; and the heat is retained longer. When cooled it is a firm jelly, of such a consistency as may readily be cut, but too stiff to be tremulous. When wanted to be used, it is merely heated, which renders it sufficiently fluid to be spread over the surface of the wood with a stiff brush.

Glue loses much of its strength by frequent re-melting, and that which is freshly made is preferable to that which is re-boiled. Never use that old dried-up and burnt glue, which may be generally found in and about a glue-pot kept for domestic use. Have the whole boiled out in a saucepan before putting fresh, clean glue into the pot. A wire stretched midway across the mouth of the pot is very useful to remove superfluous glue from the brush; this is much better than pressing it against the edge of the pot, where the glue is sure to accumulate and burn.