

## RAILS For Contractors, Switches, Gir- ders, &c. New and Second Hand.

## LOCOMOTIVES & CARS

**John J. Gartshore**  
83 Front St. West,  
(Opposite Queen's Hotel.) **TORONTO**

## SACKETT PLASTER BOARDS

Great time saver. Fire and sound proof  
Cheaper than wooden and metal lath con-  
struction. In stock at Montreal and  
Toronto. Address

**PERCIVAL W. ST. GEORGE,**  
80 St. Francois Xavier St. Montreal  
**R. E. H. BUCKNER,** Ontario Lime Association,  
Toronto.  
**JAS. J. MURPHY,** 85 St. Peter Street, Quebec.

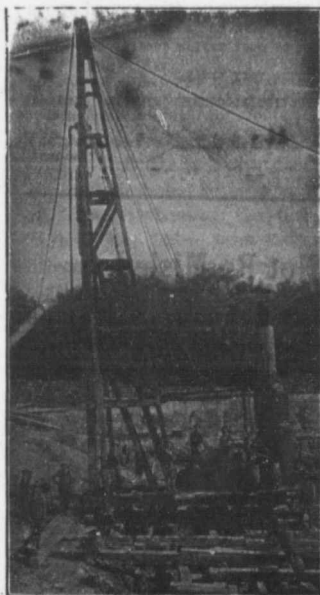
## ARTIFICIAL STONE PAVEMENTS

### SIDEWALKS A SPECIALTY

**CORPORATIONS** Will do well to consider our work  
and prices before letting contract.

The Silica Barutic Stone Company  
of Ontario, Limited.

**WALTER MILLS** Head Office:  
General Manager. **INGERSOLL, ONT.**



## PILE DRIVING

and Foundation Work.

By 5-ton Automatic Steam Pile Hammers  
Water Jet or Drop Hammers, Dock Build-  
ing, Submarine Work and Dredging.

**BUILDING MOVER AND WRECKER**  
General Contracting.

**JNO. E. RUSSELL, - Toronto**  
Residence, 1010 Queen St. E.—Phone M. 4526  
Office and yard, 307 Logan Ave.—Phone M. 3007



## VULCAN Portland Cement

DAILY CAPACITY 2500 BARRELS

Will be ready for shipment about January 1st. Our loca-  
tion, accessible to three railroads and the St. Lawrence  
River, gives excellent shipping facilities and ensures against  
car shortage in times of famines, embargoes, etc.

**WILLIAM G. HARTRANFT CEMENT COMPANY**

Sole Selling Agent  
Room 55 Bank of Ottawa Building, Montreal  
Real Estate Trust Building, Philadelphia

## JOSSON CEMENT

Is the Highest Grade Artificial Portland Cement and the Best for High  
Class Work. Has been used largely for Government and Municipal Works.

TO BE HAD FROM ALL CANADIAN DEALERS OR FROM

**C. I. DE SOLA, 180 St. James Street, MONTREAL**

## PORTLAND CEMENT

SEWER PIPES

FIRE BRICKS

FIRE CLAY

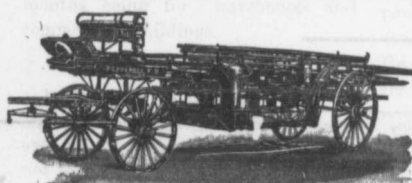
**ALEX. BREMNER**

50 Bleury Street, MONTREAL



## LIGHTNESS, STRENGTH AND ECONOMY

Seagrave Patent Trussed Ladders, Trussed Aerial, City Service and Village  
Hook and Ladder Trucks, Combination Hook and Ladder Trucks and Chemical



Engines, Trussed Trucks  
and Hand Pumps, Com-  
bination Hose Wagons and  
Chemical Engines, Hose  
Wagons, Combination Hook  
and Ladder Trucks and  
Hose Wagons, Chemical En-  
gines, Fire Extinguishers,  
Hose Reels, Patrol Wagons,  
Ambulances, Specialty Wag-  
ons, Patent Sleigh Runners,  
and other Modern Fire Fight-  
ing Tools.

Prompt attention given all inquiries. All goods built to order.

Long Distance  
Phones 686 and 687

**W. E. SEAGRAVE, WALKERVILLE  
ONT.**

## CRUSHED AND BUILDING STONE

For—Concrete, Roadwork and Sidewalks.

Also DOLOMITE LIMESTONE for  
fluxing.

**Doolittle & Wilcox Limited, - Dundas, Ont.**

Selling agents for Aetna Dynamite.

## SAMSON CEMENT

MANUFACTURED BY

**THE OWEN SOUND PORTLAND CEMENT COMPANY, LIMITED**

Owen Sound, Ont.

Works at SHALLOW LAKE, ONT.

Write us for prices.