

MUNICIPAL ENGINEERS, CONTRACTORS AND MATERIALS

WILLIS CHIPMAN

Hon. Grad. McGill University.
M. Can. Soc. C.E. M. Am. Soc. C.E.
Mem. Am. W.W. Ass'n.
WATERWORKS, SEWERAGE WORKS, GAS
WORKS, ELECTRIC LIGHT AND
POWER PLANTS
Reports, Surveys, Construction, Valuations
103 BAY STREET - TORONTO

R. E. SPEAKMAN, C.E.

A. M. Inst. C. E., 1878.

CONSULTING ENGINEER

Waterworks, Sewerage and Sewage Disposal.
Municipal Improvements.
Granolithic Pavements.
Electric Light Plants.
Drainage and Irrigation of Land.
Coal Handling Plant and Machinery.
Plans, Specifications and Estimates.
Construction and Valuations.

Canada Life Building - TORONTO

Roderick J. Parke

Am. Can. Soc. C.E., A.M. Amer. Inst. E.E.

CONSULTING ENGINEER

Hydraulic Power Development. Long Distance
Power Transmission. Steam Plants, Electric
Lighting and Power Systems. Tests
Valuations. Reports.

51-53 James Building, Cor. - TORONTO, CANADA

King and Yonge Streets
Telephones: Office—Long Distance Main 3047
Residence—Long Distance North 2204
Telegraphic address: "Rodparke."
W. U. Code, Univ. Edition.

WILLIAM H. BREITHAUP, C.E.

M. AM. SOC. C.E., M. CAN. SOC. C.E.

CONSULTING STRUCTURAL ENGINEER

Foundations, Bridges, Buildings.
BERLIN, ONT.

CEMENT TESTING**Dr. J. T. Donald**

Official Analyst to the Dominion Government.
Established 1880.

Physical and Chemical Tests on all kinds of
CEMENTS and RAW MATERIALS. Prompt
returns and lowest rates consistent with accurate
work.

112 St. Francois Xavier Street, Montreal, Canada

ROSS & HOLGATE

Consulting and
Supervising Engineers

Waterworks, Electric Light and Power
Plants, Structural Work, Reports,
Estimates, Arbitrations.

50 ST. FRANCOIS XAVIER ST. - MONTREAL

RAILS
LOCOMOTIVES AND CARS

For Contractors, Switches, Gir-
ders, &c.
New and Second Hand.

John J. Gartshore

83 Front St. West,

Opposite Queen's Hotel.) TORONTO.

FIREMEN'S LADDERS

—AND—

LADDER TRUCKS

We make the lightest, quickest,
strongest and cheapest. Every Town
and Village needs them and can afford
them. They will save 50 times their
price in insurance premiums. Write
for circulars and quotations.

THE WAGGONER LADDER CO., Limited
LONDON - - ONT.

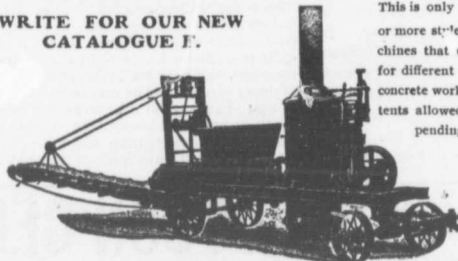
John H. Jackson**CIVIL ENGINEER**WATER POWER, ELECTRIC RAIL-
WAYS, STRUCTURAL STEEL.

Niagara Falls, Canada

Associated with Charles H. Mitchell,
C. E., Hydraulic Engineer.

CHARLES BRANDEISConsulting Electrical and Mechan-
ical Engineer.

Electric Lighting, Power, and Railway
Plants.
Liverpool, London and Globe Building,
MONTREAL.
Long Distance Telephone Main 3256.

The Greatest Concrete Mixer Yet MadeWRITE FOR OUR NEW
CATALOGUE F.

This is only one of 30
or more styles of ma-
chines that we make
for different kinds of
concrete work. 10 pa-
tents allowed, others
pending

NUMBER OF PATENTS	
35,664	
672,934	
675,035	
675,036	
675,037	
698,182	
698,910	
699,667	
699,668	
701,312	

Also
Mortar and
Asphalt Mixers

DRAKE STANDARD MACHINE WORKS

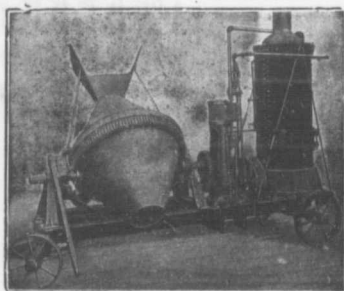
Factory,
7-9-11-13 Garden Street, Chicago.

Office and Salesroom, 298-300-302 W. Jackson Boul.
CHICAGO, ILL., U. S. A.

SMITH
CONICAL
CONCRETE
MIXER

18

Different
Sizes and
Styles.



Mixes in Batches. Discharges by Tilting while
Running. Mounted on Skids or Trucks.
Catalogue on Application.

— SOLE CANADIAN AGENTS —

W. H. C. Mussen & Co., 763 Craig St.,
MONTREAL

CANADIAN
CONTRACTOR'S
HAND-BOOK
and
Estimator

Third Edition

Price \$1.50; to
subscribers of
the Canadian
Architect and
Builder, \$1.00.

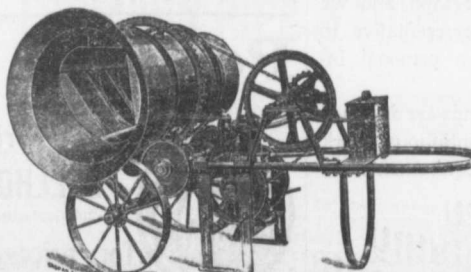
SEND FOR A COPY

C. H. Mortimer
Publishing Co.
Toronto.

Please mention THE CONTRACT RECORD when corresponding with advertisers.

THE McKELVEY CONCRETE MIXERS

MANUFACTURED BY W. A. McKELVEY, McKinnon Building,
TORONTO.



These machines
are made to mix
either continu-
ously or in
batches, and can
be operated
either by Hand,
Steam or Gas-
oline Power.