

CREAMERY LARGE SIZE, 10,000 TO 15,000 LBS OF MILK PER DAY.

Apartment for separator.....	30'	x	20'
Apartment for working the butter....	30'	x	20'
Ice house.....	18'	x	25'
Refrigerators.....	12'	x	25'
Boiler room.....	15'	x	20'
Height of the rooms.....	12'	to	14'

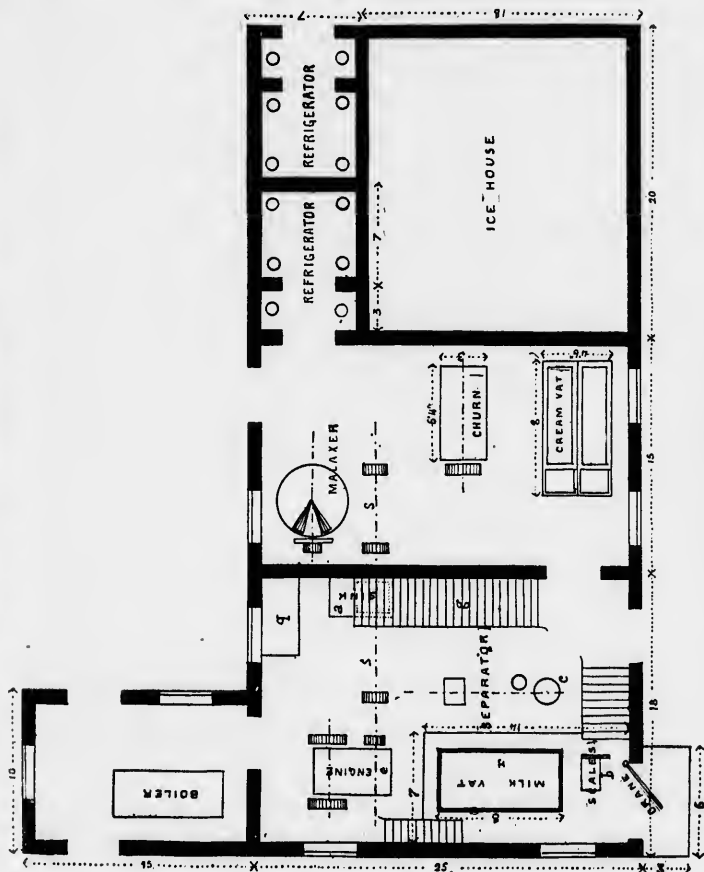


Fig. 1.—Small creamery