

WOMEN'S STYLISH WASH SKIRTS

Every woman can take satisfaction, pleasure and profit out of wearing **EATON'S** wash skirts. They look stylish, hang perfectly, have the correct cut and the material used presents a decidedly smart appearance. They are of our own manufacture and we guarantee them to be exactly as represented here.

Sizes for Women's Wash Skirts are: waist bands 22, 23, 24, 25, 26, 27, 28 and 29 inches, with choice of lengths 38, 39, 40, 41 or 42 inches, measuring from the bottom of waist band to the bottom of skirt. We do not sample the materials used in these skirts.

**Skirt of
White
Glasgow
Suiting
150**



J-9418. Made of White Glasgow Suiting in seven gore circular flare style, trimmed with wide fold of self; the bottom is finished with deep hem. A well made and generously full skirt and a splendid style for easy laundering. Price..... **1.50**

**Skirt of
White
Repp
235**



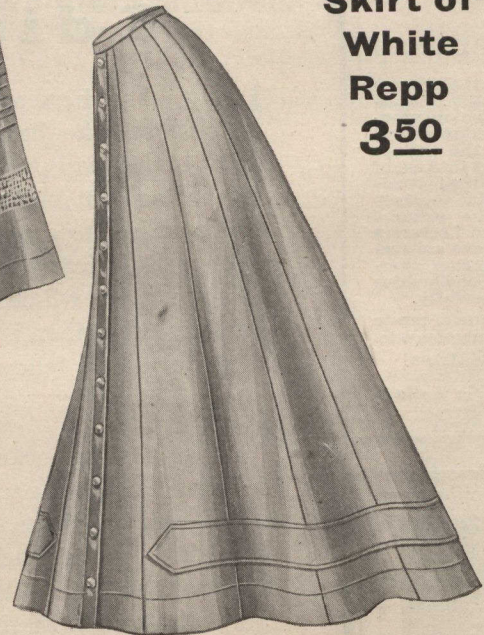
J-9334. Made of White Repp in eleven gore circular flare style, trimmed with wide fold of self and row of embroidery insertion. An attractive and serviceable skirt made with generous fullness at the bottom. Price..... **2.35**

**Skirt of
Imported
Repp
325**



J-1022. Made of Imported Repp in white or tan, in thirteen gore circular flare style with wide bias fold of self ending in points and trimmed with pearl buttons; two bands of self make an effective trimming. Price **3.25**

**Skirt of
White
Repp
350**



J-1025. Made of White Repp in the new fourteen gore open front style; the front is fastened with detachable pearl buttons, (like a man's wash vest) and can be opened out and ironed flat like a table cloth; the top is fastened with hooks and eyes. Price **3.50**

**Skirt of White
Repp 350**

J-9383. Handsome Skirt of White Repp in fifteen gore circular flare style, beautifully trimmed with Filet embroidery insertion and four stitched straps of self, finished with pearl buttons at the points. A very dressy and serviceable skirt. Price..... **3.50**

	THE T. EATON CO. LIMITED TORONTO - - - CANADA	
--	--	--