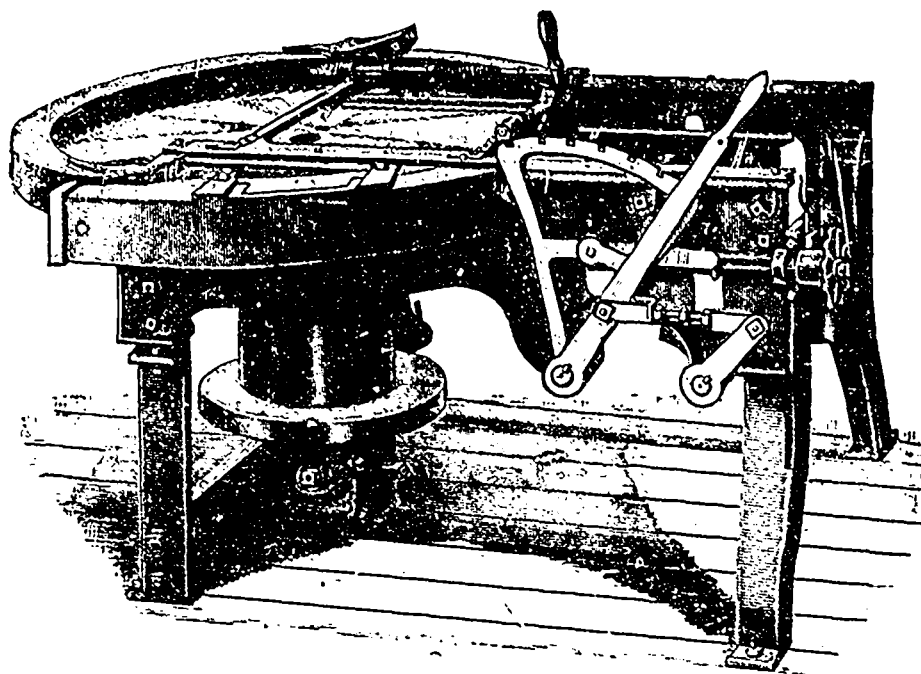


"Dauntless" Shingle, Heading and Box Board Machine

The strongest and best machine in the market. I am now making these machines to take saws up to 44 in. diameter, and to cut shingles, heading or box boards up to 26 in. long. Carriage made of steel tubing will take blocks up to 18 in. wide or wider if specified in order, and fitted with extra dogs to hold the last shingle, cuts four shingles from piece of board 1 in. thick, leaving no spalt.

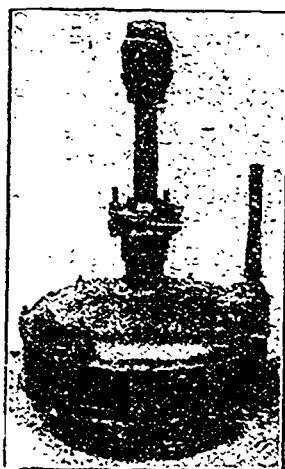
This machine with one of my new Canadian Saw Jointers makes an outfit that cannot be beaten on earth.



I make other mill machinery too. Let me quote prices and send you a Catalogue.

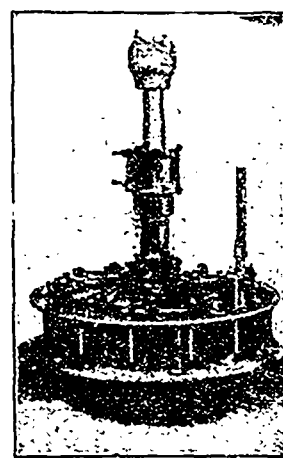
F. J. DRAKE, - Belleville, Ont.

Do You Need a Turbine?



Now is the best possible time for replacing your old, worn-out wheel with a new Turbine that will save Worry, save Time, and make Money for you. If you want a well built wheel, a wheel that will give you steady reliable power every day, a wheel that will save water, a wheel that will last you a lifetime, and that is sold at a reasonable price, then write us for catalogue and prices on the

Standard Leffel and Vulcan Turbines.



They are better developers to-day than ever before, and are growing in popularity, as our order books show.

We have now for distribution our new **SAW** and **SHINGLE MILL MACHINERY CATALOGUES**, with engravings and descriptions of our machines with their latest improvements. We will be glad to send you one on receipt of your address. You cannot buy a better Portable Mill than the "Lane Improved".

MADISON WILLIAMS, PORT PERRY, ONT.

H. E. PLANT, Agent,
Cor. Common & Nazareth Sts., MONTREAL.

SUCCESSOR TO
PAXTON, TATE & CO.

Winnipeg Machinery & Supply Co.
Western Selling Agents, Winnipeg